

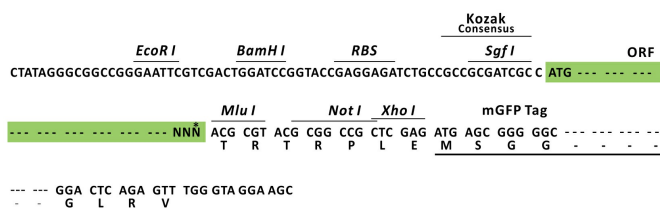
Product datasheet for MR207502L4

Des (NM_010043) Mouse Tagged Lenti ORF Clone

Product data:

Product Type:	Expression Plasmids
Product Name:	Des (NM_010043) Mouse Tagged Lenti ORF Clone
Tag:	mGFP
Symbol:	Des
Mammalian Cell Selection:	Puromycin
Vector:	pLenti-C-mGFP-P2A-Puro (PS100093)
E. coli Selection:	Chloramphenicol (34 ug/mL)
ORF Nucleotide Sequence:	The ORF insert of this clone is exactly the same as(MR207502).
Restriction Sites:	SgfI-MluI
Cloning Scheme:	

Cloning sites used for ORF Shuttling:



* The last codon before the Stop codon of the ORF.

ACCN: NM_010043

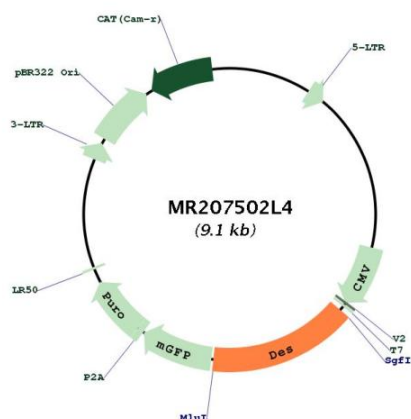
ORF Size: 1407 bp



[View online »](#)

OTI Disclaimer:	The molecular sequence of this clone aligns with the gene accession number as a point of reference only. However, individual transcript sequences of the same gene can differ through naturally occurring variations (e.g. polymorphisms), each with its own valid existence. This clone is substantially in agreement with the reference, but a complete review of all prevailing variants is recommended prior to use. More info
OTI Annotation:	This clone was engineered to express the complete ORF with an expression tag. Expression varies depending on the nature of the gene.
Components:	The ORF clone is ion-exchange column purified and shipped in a 2D barcoded Matrix tube containing 10ug of transfection-ready, dried plasmid DNA (reconstitute with 100 ul of water).
Reconstitution Method:	<ol style="list-style-type: none"> 1. Centrifuge at 5,000xg for 5min. 2. Carefully open the tube and add 100ul of sterile water to dissolve the DNA. 3. Close the tube and incubate for 10 minutes at room temperature. 4. Briefly vortex the tube and then do a quick spin (less than 5000xg) to concentrate the liquid at the bottom. 5. Store the suspended plasmid at -20°C. The DNA is stable for at least one year from date of shipping when stored at -20°C.
Note:	Plasmids are not sterile. For experiments where strict sterility is required, filtration with 0.22um filter is required.
RefSeq:	NM_010043.2 , NP_034173.1
RefSeq Size:	3065 bp
RefSeq ORF:	1410 bp
Locus ID:	13346
UniProt ID:	P31001
Cytogenetics:	1 38.85 cM
Gene Summary:	This gene encodes a muscle-specific class III intermediate filament. Homopolymers of this protein form a stable intracytoplasmic filamentous network connecting myofibrils to each other and to the plasma membrane and are essential for maintaining the strength and integrity of skeletal, cardiac and smooth muscle fibers. Mutations in this gene affect assembly of intermediate filaments. Mice lacking this gene are able to develop and reproduce but exhibit abnormal muscle fibers. Mutations in the human gene are associated with myofibrillar myopathy, dilated cardiomyopathy, neurogenic scapuloperoneal syndrome and autosomal recessive limb-girdle muscular dystrophy, type 2R. [provided by RefSeq, Jan 2014]

Product images:



Circular map for MR207502L4