

Product datasheet for MR203038

Ctdnep1 (NM_026017) Mouse Tagged ORF Clone

Product data:

Product Type:	Expression Plasmids
Product Name:	Ctdnep1 (NM_026017) Mouse Tagged ORF Clone
Tag:	Myc-DDK
Symbol:	Ctdnep1
Synonyms:	2610507E10Rik; Dullard
Mammalian Cell Selection:	Neomycin
Vector:	pCMV6-Entry (PS100001)
E. coli Selection:	Kanamycin (25 ug/mL)
ORF Nucleotide Sequence:	>MR203038 ORF sequence Red=Cloning site Blue=ORF Green=Tags(s)

TTTTGTAATACGACTCACTATAGGGCGGCCGGAATTCGTCGACTGGATCCGGTACCGAGGAGATCTGCC
GCC**CGATCGCC**

ATGATGCGGACGCAGTGTCTGCTGGGGCTGCGCACGTTTCGTGGCCTTCGCCGCAAGCTCTGGAGCTTCT
TTATTTACCTTTTTCGGGAGGCAGATCCGCACGGTAATTCAGTATCAGACTGTTTCGATATGATATCCTGCC
CTTATCTCCTTTGTCCCAGGATCGCTAGCCCAGGTGAAGAGGAAGATCCTGGTCTGGATCTGGACGAA
ACCCTGATCACTCTACCACGATGGGGTCTGAGGCCTACAGTGAGACCTGGGACACCTCCCGACTTCA
TCCTCAAGGTGGTAATAGACAAACACCCAGTCCGGTTTTTTGTACATAAGAGGCCCATGTGGATTTCTT
CTTAGAAGTGGTAAGCCAGTGGTATGAGCTTGTGGTGTTCACAGCAAGCATGGAAATTTATGGCTCTGCT
GTGGCAGATAAACTGGACAACAGCAGAAGCATTCTTAAGAGGAGATACTACAGACAGCACTGCACCTTTGG
AGTTGGGCAGCTACATCAAAGACCTCTCCGTGGTCCACAGCGACCTGTCCAGCATCGTGATCCTGGACAA
CTCCCCGGGGCTTACAGGAGCCACCCAGACAATGCCATCCCCATCAAATCCTGGTTCAGTGACCCAGT
GACACAGCCCTTCTCAACCTTCTCCAATGCTGGATGCCCTCAGGTTCACTGCTGATGTCGGATCGGTGC
TGAGCCGAAACCTCACCAACATAGGCTCTGG

ACGCGTACGCGGCCGCTCGAGCAGAACTCATCTCAGAAGAGGATCTGGCAGCAAATGATATCCTGGATT
ACAAGGATGACGACGATAAGGTTTAA



[View online »](#)

Protein Sequence: >MR203038 protein sequence
 Red=Cloning site Green=Tags(s)

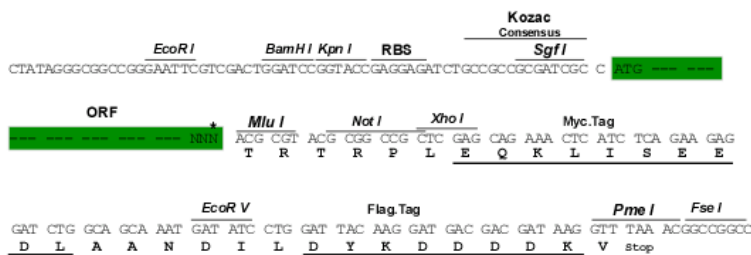
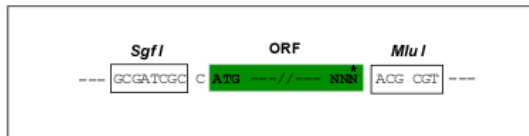
MMRTQCLLGLRTFVFAAKLWSFFIYLLRRQIRTVIQYQTVRYDILPLSPLSRNRLAQVKRKILVLDLDE
 TLIHSHHDGVL RPTV RPTGTPPDFILKVVIDKHPVRFVHVKRPHVDFLEVVVSQWYELVVFTASMEIYGSA
 VADKLDNSRSILKRYYRQHCTLELGSYIKDLSVVHSDLSSIVILDNSPGAYRSHPDNAIPIKSWFSDPS
 DTALLNLLPMLDALRFTADVRSVLSRNHLHQHRLW

TRTRPLEQKLISEEDLAANDILDYKDDDDKV

Restriction Sites: SgfI-MluI

Cloning Scheme:

Cloning sites used for ORF Shuttling:



* The last codon before the Stop codon of the ORF

ACCN: NM_026017

ORF Size: 735 bp

OTI Disclaimer: The molecular sequence of this clone aligns with the gene accession number as a point of reference only. However, individual transcript sequences of the same gene can differ through naturally occurring variations (e.g. polymorphisms), each with its own valid existence. This clone is substantially in agreement with the reference, but a complete review of all prevailing variants is recommended prior to use. [More info](#)

OTI Annotation: This clone was engineered to express the complete ORF with an expression tag. Expression varies depending on the nature of the gene.

Components: The ORF clone is ion-exchange column purified and shipped in a 2D barcoded Matrix tube containing 10ug of transfection-ready, dried plasmid DNA (reconstitute with 100 ul of water).

Reconstitution Method:

1. Centrifuge at 5,000xg for 5min.
2. Carefully open the tube and add 100ul of sterile water to dissolve the DNA.
3. Close the tube and incubate for 10 minutes at room temperature.
4. Briefly vortex the tube and then do a quick spin (less than 5000xg) to concentrate the liquid at the bottom.
5. Store the suspended plasmid at -20°C. The DNA is stable for at least one year from date of shipping when stored at -20°C.

RefSeq: [NM_026017.2](#), [NP_080293.1](#)

RefSeq Size: 1615 bp

RefSeq ORF: 735 bp

Locus ID: 67181

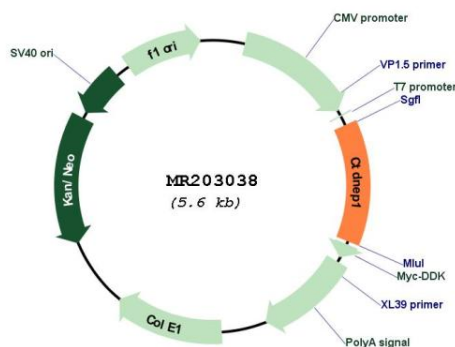
UniProt ID: [Q3TP92](#)

Cytogenetics: 11 B3

MW: 28.4 kDa

Gene Summary: Serine/threonine protein phosphatase forming with CNEP1R1 an active phosphatase complex that dephosphorylates and may activate LPIN1 and LPIN2. LPIN1 and LPIN2 are phosphatidate phosphatases that catalyze the conversion of phosphatidic acid to diacylglycerol and control the metabolism of fatty acids at different levels. May indirectly modulate the lipid composition of nuclear and/or endoplasmic reticulum membranes and be required for proper nuclear membrane morphology and/or dynamics. May also indirectly regulate the production of lipid droplets and triacylglycerol. May antagonize BMP signaling (By similarity).[UniProtKB/Swiss-Prot Function]

Product images:



Circular map for MR203038