

## Product datasheet for **MG227616**

### **Npr3 (NM\_008728) Mouse Tagged ORF Clone**

#### **Product data:**

Product Type:	Expression Plasmids
Product Name:	Npr3 (NM_008728) Mouse Tagged ORF Clone
Tag:	TurboGFP
Symbol:	Npr3
Synonyms:	ANP-C; ANPR-C; EF-2; Igj; NPR-C; stri
Mammalian Cell Selection:	Neomycin
Vector:	pCMV6-AC-GFP (PS100010)
E. coli Selection:	Ampicillin (100 ug/mL)



[View online »](#)

**ORF Nucleotide Sequence:**

>MG227616 representing NM\_008728  
 Red=Cloning site Blue=ORF Green=Tags(s)

TTTTGTAATACGACTCACTATAGGGCGGCCGGGAATTCGTCGACTGGATCCGGTACCGAGGAGATCTGCC  
 GCC**CGGATCGCC**

ATGCGGTCCTTGCTGCTGTTCACTTTCTCGGCGTGCCTGCTGCTGGCCCGGTGCTGCTGGCTGGCGGC  
 CGAGCAGCGCGCGCGGGACACCCGGCCAGGCAGCAGGCCCGGCGAGAGAGGCCGCTGGCGGCTCAAAA  
 GATCGAGGTGCTTGTCTATTGCCCGGGACGATTCTGACTTGTCTCGCTGGCCCGGTGAGGCCGGCC  
 ATCGAGTACGCGCTGCGTAGCGTGGAGGCAATGGCACCGGGAGGAAGCTGCTGCCCGCGGCACTCGCT  
 TCCAGGTGGCCTACGAAGACTCGGACTGCGGCAACCGCGCGCTTTCAGTCTTGTGGACCGCTGGCGGC  
 GGCGCGCGGCCAAGCCGGATCTCATCTGGGCCCCTGTGCGAGTACGCGCGCGCCGGTGGCTCGG  
 CTGGCGTCTCACTGGGACCTGCCGATGCTGTCCGAGGAGCGCTGGCCCGGTTCCAGACAAGGACA  
 CGGAATACTCGACCTCACGCGCGTGGCGCCTGCCTACGCCAAGATGGGAGAGATGATGCTCGCTGTT  
 TCGCCACCACCACTGGAGCCGTGCAGCCCTGGTCTACAGCGACGACAACTCGAGAGGAAGTGTATTTT  
 ACCTCGAGGGGGTCCACGAGGTTTTTCAGGAGGAGGGGTTGCACACGCTGCCTACAATTTTCGACGAAA  
 CCAAAGACTTGGACCTGGACGACATAGTGCCTACATCCAAGGCAGCGAGCGAGTGGTGTATGTGTGC  
 CAGTGGTGACACCATTCCGAGAATCATGTTGGCGGTGCACAGACCGGCATGACCAGTGGAGACTACGCT  
 TTCTTCAACATTGAACCTTTCAACAGTTCTTCTACGGAGATGGCTCGTGGAGGAGAGGAGACAAACACG  
 ACTCTGAAGCTAAACAAGCATACTCGTCCCTCCAAACAGTCACTACTGAGGACCGTGAACCTGAGTT  
 TGAGAAGTTTTCCATGGAGGTGAAAAGTTCTGTTGAGAAAAGGGCTCAATGAGGAGGATTACGTGAAC  
 ATGTTTGTGAAGGTTCCATGACGCCATCCTCCTACGTTCTGGCTTACACGAAGTGTGCTGAGGCTG  
 GCTACAGCAAGAAGGATGGGGGAAAATCATCCAGCAGACTTGGAACAGGACATTTGAAGGTATCGCTGG  
 GCAGGTGCCATAGATGCCAACGGGGACCGGTATGGGGACTTCTCTGTGGTTGCCATGACTGACACTGAA  
 GCAGGCACCCAAGAGGTATTGGTGATTACTTTGGAAAAGAGCCGGTCCAAATGCGATCGAATGTCA  
 AATATCCTTGGGGCCCTTGAACCTGAGACTAGATGAGACCAGAATCGTGGAGCATAACCAACAGCTCCT  
 TTGCAATCATGTGGCCTAGAAGAATCTGCAGTGACAGGAATCGTTGTGGGGGCCCTACTAGGTGCTGGC  
 TTGCTAATGGCCTTCTACTTTTTAGGAAGAAATACAGAATAACCATTGAGAGGGCAATCAGCAAGAGG  
 AAAGCAACATCGGAAGCATCGAGAGCTGCGGGAAGATTCCATCAGATCACATTTTTCGGTGGCT

**ACGCGTACGCGGCCGCTCGAG** – GFP Tag – GTTTAA

**Protein Sequence:**

>MG227616 representing NM\_008728  
 Red=Cloning site Green=Tags(s)

MRSLLLFTHSACVLLARVLLAGGASSGAGDTRPGSRRRAREALAAQKIEVLVLLPRDDSYLFLSARVRPA  
 IEYALRSVEGNGTGRKLLPPGTRFQVAYEDSDCGNRALFSLVDRVAAAARGAKPDLILGPVCEYAAAPVAR  
 LASHWDLPMLSAGALAAGFQHKDTEYSHLTRVAPAYAKMGEMMLALFRHHHWSRAALVYSDDKLERNCYF  
 TLEGVHEVFQEEGLHTSAYNFDETKDLDDIVRYIQGSERVVIMCASGDTIRRIMLAVHRHGMTSGDYA  
 FFNIELFNSSSYGDGWSRRGDKHDSEAKQAYSSLQTVTLRLTVKPEFEKFSMEVKSSVEKQGLNEEDYVN  
 MFVEGFHDAILLYVLALHEVLRAGYSKKDGGKIIQQTWNRTFEGIAGQVSIIDANGDRYGDVSVVAMTDTE  
 AGTQEVIGDYFGKEGRFQMRSNVKYPWGPLKRLDETRIVEHTNSSPCKSCGLEESAVTGIVVGALLGAG  
 LLMAFYFFRKKYRITIERRNQEEESNIGKHRELREDSIRSHFSVA

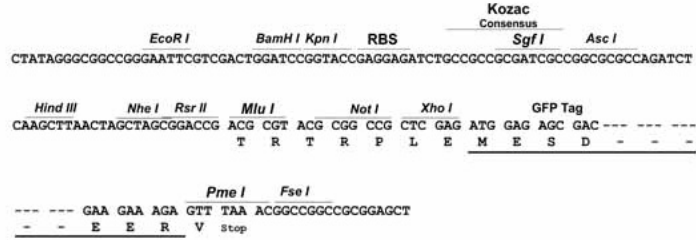
**TRTRPLE** – GFP Tag – V

**Restriction Sites:**

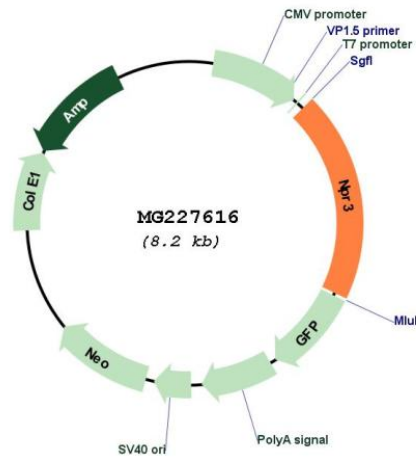
Sgfl-MluI

Cloning Scheme:

Cloning sites used for ORF Shutting:



Plasmid Map:



<b>ACCN:</b>	NM_008728
<b>ORF Size:</b>	1608 bp
<b>OTI Disclaimer:</b>	The molecular sequence of this clone aligns with the gene accession number as a point of reference only. However, individual transcript sequences of the same gene can differ through naturally occurring variations (e.g. polymorphisms), each with its own valid existence. This clone is substantially in agreement with the reference, but a complete review of all prevailing variants is recommended prior to use. <a href="#">More info</a>
<b>OTI Annotation:</b>	This clone was engineered to express the complete ORF with an expression tag. Expression varies depending on the nature of the gene.
<b>Components:</b>	The ORF clone is ion-exchange column purified and shipped in a 2D barcoded Matrix tube containing 10ug of transfection-ready, dried plasmid DNA (reconstitute with 100 ul of water).
<b>Reconstitution Method:</b>	<ol style="list-style-type: none"><li>1. Centrifuge at 5,000xg for 5min.</li><li>2. Carefully open the tube and add 100ul of sterile water to dissolve the DNA.</li><li>3. Close the tube and incubate for 10 minutes at room temperature.</li><li>4. Briefly vortex the tube and then do a quick spin (less than 5000xg) to concentrate the liquid at the bottom.</li><li>5. Store the suspended plasmid at -20°C. The DNA is stable for at least one year from date of shipping when stored at -20°C.</li></ol>
<b>RefSeq:</b>	<a href="#">NM_008728.2</a> , <a href="#">NP_032754.2</a>
<b>RefSeq Size:</b>	6927 bp
<b>RefSeq ORF:</b>	1611 bp
<b>Locus ID:</b>	18162
<b>UniProt ID:</b>	<a href="#">P70180</a>
<b>Cytogenetics:</b>	15 5.83 cM
<b>Gene Summary:</b>	Receptor for the natriuretic peptide hormones, binding with similar affinities atrial natriuretic peptide NPPA/ANP, brain natriuretic peptide NPPB/BNP, and C-type natriuretic peptide NPPC/CNP (PubMed:10377427, PubMed:17951249). May function as a clearance receptor for NPPA, NPPB and NPPC, regulating their local concentrations and effects (PubMed:10377427, PubMed:17951249). May regulate diuresis, blood pressure and skeletal development (PubMed:10377427). Does not have guanylate cyclase activity (PubMed:10377427). [UniProtKB/Swiss-Prot Function]