

Product datasheet for **MG227516**

Ikzf1 (NM_001025597) Mouse Tagged ORF Clone

Product data:

Product Type:	Expression Plasmids
Product Name:	Ikzf1 (NM_001025597) Mouse Tagged ORF Clone
Tag:	TurboGFP
Symbol:	Ikzf1
Synonyms:	5832432G11Rik; hlk-1; I; Ikaros; LyF-; LyF-1; mKIAA4227; Zfpn; Zfpn1a1; Znfn1a1
Mammalian Cell Selection:	Neomycin
Vector:	pCMV6-AC-GFP (PS100010)
E. coli Selection:	Ampicillin (100 ug/mL)



[View online »](#)

ORF Nucleotide Sequence:

>MG227516 representing NM_001025597
 Red=Cloning site Blue=ORF Green=Tags(s)

TTTTGTAATACGACTCACTATAGGGCGGCCGGGAATTCGTCGACTGGATCCGGTACCGAGGAGATCTGCC
 GCC**CGGATCGCC**

ATGGATGTCGATGAGGGTCAAGACATGTCCCAAGTTTCAGGAAAGGAGAGCCCCCAGTCAGTGACACTC
 CAGATGAAGGGGATGAGCCCATGCCTGTCCCTGAGGACCTGTCCACTACCTCTGGAGCACAGCAGAACTC
 CAAGAGTGATCGAGGCATGGCCAGTAATGTTAAAGTAGAGACTCAGAGTGATGAAGAGAATGGGCGTGCC
 TGTGAAATGAATGGGGAAGAATGTGCAGAGGATTTACGAATGCTTGATGCCTCGGGAGAGAAAATGAATG
 GCTCCACAGGGACCAAGGCAGCTCGGCTTTGTCAGGAGTTGGAGGCATTCGACTTCTAACGAAAACT
 AAAGTGTGATATCTGTGGGATCGTTTGCATCGGGCCCAATGTGCTCATGGTTCACAAAAGAAGTCATACT
 GGTGAACGGCCTTTCCAGTGAACCAAGTGTGGGCGCTCCTTTACCCAGAAAGGCAACCTCCTGCGGCACA
 TCAAGTGCCTCGGGTGAAGCCCTTCAAATGCCATCTTTGCAACTATGCCTGCCGCCGAGGGGACGC
 CCTCACCGGCCACTGAGGACGCACTCCGTTGGTAAGCCTCACAATGTGGATATTGTGGCCGGAGCTAT
 AAACAGCGAAGCTCTTTAGAGGAGCATAAAGAGCGATGCCACAACCTACTTGGAAAAGCATGGGCTTCCGG
 GCATGTACCCAGTCATTAAGGAAGAAAATAACCAACAGGATGGCAGAAGACCTGTGCAAGATAGGAGC
 AGAGAGGTCCCTTGTCTGGACAGGCTGGCAAGCAATGTCGCCAAACGTAAGAGCTCTATGCCTCAGAAA
 TTTCTTGAGACAAGTGCTGTGACAGATGCCCTATGACAGTGCCAACCTATGAGAAGGAGGATATGATGA
 CATCCACGTGATGGACCAGGCCATCAACAATGCCATCAACTACCTGGGGGCTGAGTCCCTGCGCCCAT
 GGTGCAGACACCCCGGTAGCTCCGAGGTGGTCCAGTCATCAGCTCCATGTACCAGCTGCACAAGCCC
 CCCTCAGATGGCCCCCAGGTCCAACCATTCAGCACAGGACGCCGCTGGATAACTGTGCTGCTGTCCA
 AGGCCAAGTCTGTGTCATCGGAGCGAGAGGCCTCCCCGAGCAACAGCTGCCAAGACTCCACAGATACAGA
 GAGCAACGCGGAGGAACAGCGCAGCGCCCTTATCTACCTAACCAACCACATCAACCCGCATGCACGCAAT
 GGGCTGGCTCTCAAGGAGGAGCAGCGCGCTACGAGGTGCTGAGGGCGGCCCTCAGAGAACTCGCAGGATG
 CCTTCCGTGTGGTCAAGCAGAGTGGCGAGCAGCTGAAGGTGTACAAGTGCGAACACTGCCCGTGTCTT
 CCTGGATCAGTCATGTATACCATTCACATGGGCTGCCATGGCTTTCCGGATCCCTTTGAGTGAACATG
 TGTGGTTATCACAGCCAGGACAGGTACGAGTTCTCATCCCATATCACGCGGGGGGAGCATCGTTACCACC
 TGAGC

ACGCGTACGCGGCCGCTCGAG - GFP Tag - GTTTAA

Protein Sequence:

>MG227516 representing NM_001025597
 Red=Cloning site Green=Tags(s)

MDVDEGQDMSQVSGKESPPVSDTPDEGDEPMPVPEDLSTTSGAQQNSKSDRGMASNVKIVETQSDEENGR
 CEMNGEECAEDLRMLDASGEKMNGSHRDQSSALSGVGGIRLPNGKLLKCDICGIVCIGPNVLMVHKRSHT
 GERPFQCNQCGASFTQKGNLLRHILKHSGEKPFKCHLCNYACRRRDALTGHLRTHSVGKPHKCGYGRSY
 KQRSSLEEHEKCHNYLESMLPGMYPVIKEETNHNEMAEDLCKIGAERSLVLDRLASNVAKRKSMPQK
 FLGDKCLSDMPYDSANYEKEDMMTSHVMDQAINNAINYLGAESLRPLVQTPPGSSEVVPVISSMYQLHKP
 PSDGPPRSNHSAQDAVDNLLLLSKAKSVSSEREASPSNSCQDSTDTESNAAEQRSGLIYLTNHNPHARN
 GLALKEEQRAYEVLRAASENSQDAFRVSTSGEQLKVYKCEHCRVFLDHVMTIHMGGHGFDRDPFECNM
 CGYHSQDRYEFSSHITRGEHRYHLS

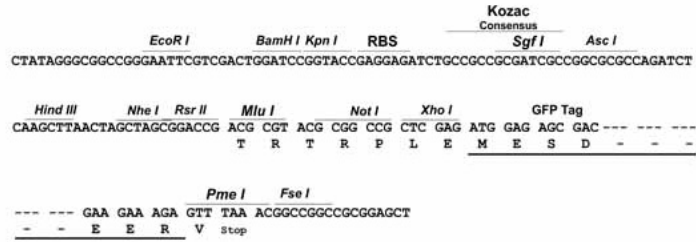
TRTRPLE - GFP Tag - V

Restriction Sites:

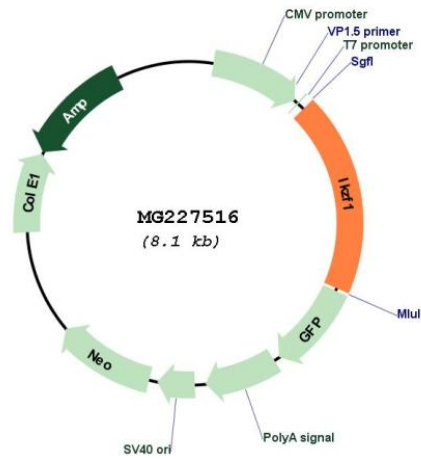
Sgfl-MluI

Cloning Scheme:

Cloning sites used for ORF Shutting:



Plasmid Map:



ACCN:	NM_001025597
ORF Size:	1545 bp
OTI Disclaimer:	The molecular sequence of this clone aligns with the gene accession number as a point of reference only. However, individual transcript sequences of the same gene can differ through naturally occurring variations (e.g. polymorphisms), each with its own valid existence. This clone is substantially in agreement with the reference, but a complete review of all prevailing variants is recommended prior to use. More info
OTI Annotation:	This clone was engineered to express the complete ORF with an expression tag. Expression varies depending on the nature of the gene.
Components:	The ORF clone is ion-exchange column purified and shipped in a 2D barcoded Matrix tube containing 10ug of transfection-ready, dried plasmid DNA (reconstitute with 100 ul of water).
Reconstitution Method:	<ol style="list-style-type: none">1. Centrifuge at 5,000xg for 5min.2. Carefully open the tube and add 100ul of sterile water to dissolve the DNA.3. Close the tube and incubate for 10 minutes at room temperature.4. Briefly vortex the tube and then do a quick spin (less than 5000xg) to concentrate the liquid at the bottom.5. Store the suspended plasmid at -20°C. The DNA is stable for at least one year from date of shipping when stored at -20°C.
RefSeq:	NM_001025597.2
RefSeq Size:	5163 bp
RefSeq ORF:	1548 bp
Locus ID:	22778
Cytogenetics:	11 7.02 cM
Gene Summary:	The protein encoded by this gene belongs to a family of transcription factors that are characterized by a set of four DNA-binding zinc fingers at the N-terminus and two C-terminal zinc fingers involved in protein dimerization. It is regulated by both epigenetic and transcription factors. This protein is a transcriptional regulator of hematopoietic cell development and homeostasis. In addition, it is required to confer temporal competence to retinal progenitor cells during embryogenesis, demonstrating an essential function in nervous system development. Alternative splicing results in multiple transcript variants encoding different isoforms. [provided by RefSeq, Sep 2014]