

## Product datasheet for **MG227395**

### **Ace (NM\_009598) Mouse Tagged ORF Clone**

#### **Product data:**

Product Type:	Expression Plasmids
Product Name:	Ace (NM_009598) Mouse Tagged ORF Clone
Tag:	TurboGFP
Symbol:	Ace
Synonyms:	AW208573; CD143
Mammalian Cell Selection:	Neomycin
Vector:	pCMV6-AC-GFP (PS100010)
E. coli Selection:	Ampicillin (100 ug/mL)



[View online »](#)

**ORF Nucleotide Sequence:**

>MG227395 representing NM\_009598  
 Red=Cloning site Blue=ORF Green=Tags(s)

TTTTGTAATACGACTCACTATAGGGCGGCCGGGAATTCGTCGACTGGATCCGGTACCGAGGAGATCTGCC  
 GCC**GCGATCGCC**

ATGGGCCAAGGTTGGGCTACTCCAGGACTGCCAGCTTCTCTTTCTGCTGCTGCTGTGGGCACCATC  
 TGCTGGTCTGAGTCAGGTGGCCACTGACCACGTGACAGCCAACCAGGGATAACAAACCAGGCAACAAC  
 CAGAAGCCAGACAACAATCACCAGCAACCATTGACCAGACAACCCAGATCCCAAACCTAGAGACTGAT  
 GAAGCCAAGGCTGACAGGTTCTGGAAGAGTATGACCGGACAGCCCAAGTGTGTTGAACGAGTACGCGAG  
 AGGCCAACTGGCAATATAACACCAACATTACCATAGAGGGCAGCAAGATCCTGCTTGAGAAAAGCACGGA  
 GGTATCCAATCACACCCTGAAATATGGCACCCGGGCCAAGACATTTGATGTGAGCAACTTCAAACCTCT  
 TCCATCAAGCGGATCATAAAGAAGCTTCAGAACCTGGACCGGGCAGTGTGCCTCCCAAGGAATTAGAAG  
 AGTACAACCAGATCCTGCTAGACATGGAGACAACCTACAGCTTATCCAACATTTGCTACACAATGGCAC  
 TTGTATGCCCTGGAACCTGATCTAACAAACATGATGGCCACATCCCGAAATATGAAGAATTGCTATGG  
 GCATGGAAGAGCTGGAGAGACAAGGTGGGGAGAGCCATCCTTCTTTTTTCCCAAAGTATGTGGAGTTCT  
 CCAACAAGATTGCCAAGCTCAATGGCTACACGGATGCAGGGGATTCATGGAGATCCTTATACGAGTCTGA  
 CAACCTGGAGCAAGACCTGGAAAACTGTACCAGGAGCTGCAGCCACTCTACCTGAACCTGCATGCCTAT  
 GTGCGTCGTTCCCTGCACCGCCACTATGGGTCCGAGTACATCAACCTGGATGGCCCCATTCTGCCCATC  
 TGCTAGGGAACATGTGGGCGCAGACCTGGTCCAACATCTATGATTTGGTGGCGCCCTTCCCTTCCGCCCC  
 CAATATAGATGCCACGGAAGCCATGATAAAGCAGGGATGGACACCCAGAAGGATATTTAAGGAAGCTGAC  
 AATTTCTTTACCTCCCTGGGGCTGTTACCTGTGCCCTTGAGTTCTGGAACAAGTCGATGTTAGAGAAGC  
 CCACCGATGGAAGGGAGGTGGTGTGCCATCCCTCAGCCTGGGACTTCTACAACGGCAAGGATTCAGGAT  
 CAAGCAGTGTACCTCTGTGAACATGGAGACTTGGTGATAGCGCACACGAAATGGGCCACATCCAGTAT  
 TTCATGCAGTACAAAGACTTACCCTGACTTTCGGGAGGGTGCCAACCCTGGTTTTTCATGAAGCTATTG  
 GAGATATAATGGCTCTCTCAGTGTCTACCCCCAAGCATCTATACAGTCTCAACCTGCTTAGCACTGAGGG  
 CAGTGGCTACGAGTATGACATCAACTTTCTAATGAAGATGGCCCTCGACAAGATCGCCTTTATCCCTTC  
 AGCTACCTCATCGACCAGTGGCGCTGGAGGTCTTTGATGGAAGCATCACCAAGGAGAATAAACCAGG  
 AGTGGTGGAGCCTCAGGCTGAAGTATCAGGGTCTGTGCCCCCAGTGCCAAGATCCCAAGGTGACTTTGA  
 CCCAGGGTCCAAGTTCACGTTCCCTGCGAACGTGCCATACGTGAGTACTTTGTCAGCTTATCATCCAG  
 TTCAGTTCCACGAGGCGCTGTGTGCGCAGCCGGGCACACGGGTCCCCTGCACAAGTGTGACATCTACC  
 AATCCAAGGAAGCAGGAAGCTCCTGGCGGATGCCATGAAGCTGGGCTACAGTAAGCCGTGGCCAGAGGC  
 CATGAAGCTGATCACAGGCCAGCCTAACATGTCAGCCTCCGCCATGATGAATTACTTCAAGCCACTGACA  
 GAATGGCTCGTACCCGAGAACAGGAGACATGGAGAGACTGGGCTGGCCGGAGTACAACCTGGGCGCCAA  
 ACACCGCTCGCGCAGAAGGCTCCACCGCAGAGTCCAACCGCGTCAATTTCTGGGCTGTACCTGGAGCC  
 ACAGCAGGCCCGCTGGGCCAGTGGGTGCTGCTTCTGGGCGTCGCCCTGCTCGTGGCCACCGTGGGT  
 CTCGCCATCGGCTCTACAACATCCGTAACCATCACAGCCTCCGCCGGCCCCACCGTGGGCCCCAGTTTG  
 GGTTCTGAGGTGGAGCTCAGACTCC

**ACGCGTACGCGGCCGCTCGAG** - GFP Tag - GTTTAA

**Protein Sequence:**

>MG227395 representing NM\_009598  
 Red=Cloning site Green=Tags(s)

MGQGWATPGLPSFLFLLCCGHLLVLSQVATDHVTANQGITNQATTRSQTTHQATIDQTTQIPNLETD  
 EAKADRFVEEYDRTAQVLLNEYAEANWQYNTNITIEGSKILLEKSTEVSNHTLKYGTRAKTFDVSNFQNS  
 SIKRIIKKLQNLDRAVLPPKELEEYNQILLDMETTYSLSNICYTNGTCMPLEPDLTNMMATSRKYEELLW  
 AWKSWRDKVGRAILPFFPKYVEFSNKIAKLNQYTDAGDSWRSLYESDNLEQDLEKLYQELQPLYLNLHAY  
 VRRSLHRHYGSEYINLDGPIPAHLLGNMWAQTSNIYDLVAPFPSAPNIDATEAMIKQGWTERRIFKEAD  
 NFFTSLGLLPVPPEFWNKSMLEKPTDGREVVCHPSAWDFYNGKDFRIKQCTSVNMEDLVIAHHEMGHIQY  
 FMQYKDLPVTFREGANPGFHEAIGDIMALSVSTPKHLYSLNLLSTEGSGYEYDINFLMKMALDKIAFIPF  
 SYLIDQWRWRVFDGSITKENYNQEWWSLRKLYQGLCPPVPRSQGDFFPGSKFHVPANVPYVRYFVSFIIQ  
 FQFHEALCRAAGHTGPLHKCDIYQSKEAGKLLADAMKLGYSKPWPEAMKLITGQPNMSASAMMNYFKPLT  
 EWLVTENRRHGETLGPWEYNWAPNTARAEGSTAESNRVNFGLYLEPQQARVQWVLLFLGVALLVATVG  
 LAHRLYNIRNHSLRRPHRGPQFGSEVELRHS

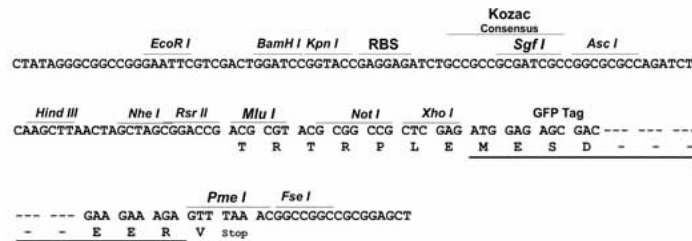
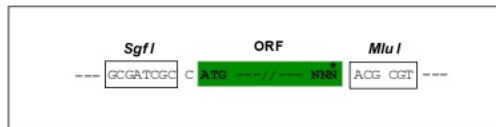
TRTRPLE - GFP Tag - V

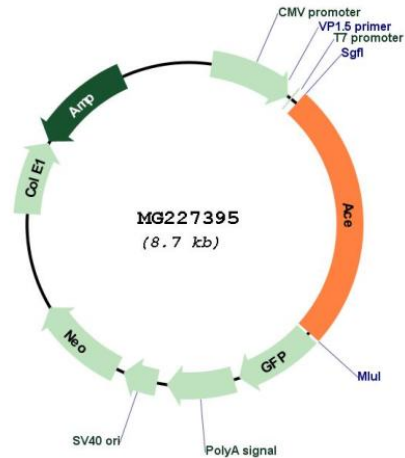
**Restriction Sites:**

SgfI-MluI

**Cloning Scheme:**

Cloning sites used for ORF Shutting:



**Plasmid Map:**


**ACCN:** NM\_009598

**ORF Size:** 2196 bp

**OTI Disclaimer:** The molecular sequence of this clone aligns with the gene accession number as a point of reference only. However, individual transcript sequences of the same gene can differ through naturally occurring variations (e.g. polymorphisms), each with its own valid existence. This clone is substantially in agreement with the reference, but a complete review of all prevailing variants is recommended prior to use. [More info](#)

**OTI Annotation:** This clone was engineered to express the complete ORF with an expression tag. Expression varies depending on the nature of the gene.

**Components:** The ORF clone is ion-exchange column purified and shipped in a 2D barcoded Matrix tube containing 10ug of transfection-ready, dried plasmid DNA (reconstitute with 100 ul of water).

**Reconstitution Method:**

1. Centrifuge at 5,000xg for 5min.
2. Carefully open the tube and add 100ul of sterile water to dissolve the DNA.
3. Close the tube and incubate for 10 minutes at room temperature.
4. Briefly vortex the tube and then do a quick spin (less than 5000xg) to concentrate the liquid at the bottom.
5. Store the suspended plasmid at -20°C. The DNA is stable for at least one year from date of shipping when stored at -20°C.

**RefSeq:** [NM\\_009598.3](#)

**RefSeq Size:** 3129 bp

**RefSeq ORF:** 2199 bp

**Locus ID:** 11421

UniProt ID: [P09470](#)

Cytogenetics: 11 68.84 cM

**Gene Summary:** Converts angiotensin I to angiotensin II by release of the terminal His-Leu, this results in an increase of the vasoconstrictor activity of angiotensin. Also able to inactivate bradykinin, a potent vasodilator. Has also a glycosidase activity which releases GPI-anchored proteins from the membrane by cleaving the mannose linkage in the GPI moiety. This GPIase activity seems to be crucial for the egg-binding ability of the sperm.[UniProtKB/Swiss-Prot Function]