

Product datasheet for **MG227281**

Il6 (NM_031168) Mouse Tagged ORF Clone

Product data:

Product Type: Expression Plasmids
 Product Name: Il6 (NM_031168) Mouse Tagged ORF Clone
 Tag: TurboGFP
 Symbol: Il6
 Synonyms: Il; Il-6
 Mammalian Cell Selection: Neomycin
 Vector: pCMV6-AC-GFP (PS100010)
 E. coli Selection: Ampicillin (100 ug/mL)
 ORF Nucleotide Sequence: >MG227281 representing NM_031168
 Red=Cloning site Blue=ORF Green=Tags(s)

TTTTGTAATACGACTCACTATAGGGCGCCGGGAATTCGTCGACTGGATCCGGTACCGAGGAGATCTGCC
 GCC**CGATCGCC**

ATGAAGTTCCTCTCTGCAAGAGACTTCCATCCAGTTGCCTTCTTGGGACTGATGCTGGTGACAACCCAGG
 CCTTCCCTACTTCACAAGTCCGGAGAGGAGACTTCACAGAGGATACCACTCCCAACAGACCTGTCTATAC
 CACTTCACAAGTCGGAGGCTTAATTACACATGTTCTCTGGGAAATCGTGGAAATGAGAAAAGAGTTGTGC
 AATGGCAATTCTGATTGTATGAACAACGATGATGCACTGCAGAAAACAATCTGAACTTCCAGAGATAC
 AAAGAAATGATGGATGCTACCAAATGGATATAATCAGGAAATTTGCCTATTGAAAATTTCTCTGGTCT
 TCTGGAGTACCATAGCTACCTGGAGTACATGAAGAACAATTTAAAGATAACAAGAAAGACAAGCCAGA
 GTCCTTCAGAGAGATACAGAACTCTAATTCATATCTTCAACCAAGAGGTAAGATTTACATAAAATAG
 TCCTTCTACCCAATTTCCAATGCTCTCCTAACAGATAAGCTGGAGTCACAGAAGGAGTGGCTAAGGAC
 CAAGACCATCCAATTCATCTTGAATCACTTGAAGAATTTCTAAAAGTCACTTTGAGATCTACTCGGCAA
 ACC

ACGCGTACGCGGCCGCTCGAG - GFP Tag - GTTTAA



[View online »](#)

Protein Sequence: >MG227281 representing NM_031168
Red=Cloning site Green=Tags(s)

MKFLSARDFHPVAFGLMLVTTTAFPTSQVRRGDFTEDTTPNRPVYTTSQVGGLITHVLWEIVEMRKELC
 NGNSDCMNDDALAENNLKLP EIQRNDGCYQTGYNQEICLLKISSGLLEYHSYLEYMKNNLKDNKKDKAR
 VLQRDTE TLIHIFNQEVKDLHKIVLPTPI SNALLTDKLESQKEWLRKTIQFILKSLEELFKVTLRSTRQ
 T

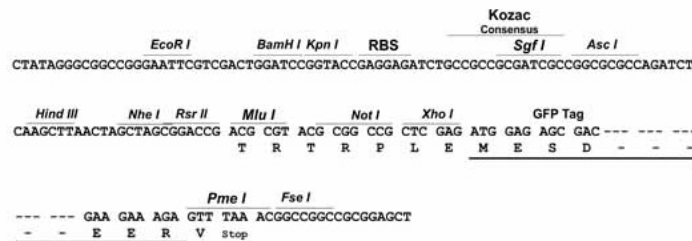
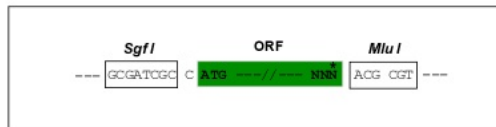
TRTRPLE - GFP Tag - V

Chromatograms: https://cdn.origene.com/chromatograms/ja3254_a08.zip

Restriction Sites: SgfI-MluI

Cloning Scheme:

Cloning sites used for ORF Shuttling:



ACCN: NM_031168

ORF Size: 633 bp

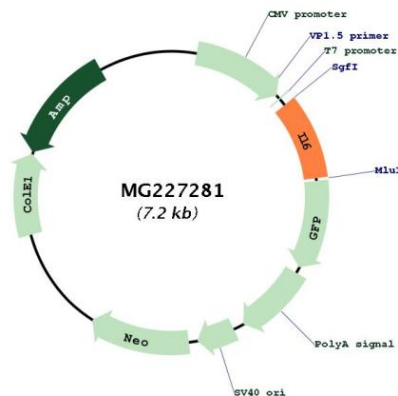
OTI Disclaimer: Due to the inherent nature of this plasmid, standard methods to replicate additional amounts of DNA in E. coli are highly likely to result in mutations and/or rearrangements. Therefore, OriGene does not guarantee the capability to replicate this plasmid DNA. Additional amounts of DNA can be purchased from OriGene with batch-specific, full-sequence verification at a reduced cost. Please contact our customer care team at custsupport@origene.com or by calling 301.340.3188 option 3 for pricing and delivery.

The molecular sequence of this clone aligns with the gene accession number as a point of reference only. However, individual transcript sequences of the same gene can differ through naturally occurring variations (e.g. polymorphisms), each with its own valid existence. This clone is substantially in agreement with the reference, but a complete review of all prevailing variants is recommended prior to use. [More info](#)

OTI Annotation: This clone was engineered to express the complete ORF with an expression tag. Expression varies depending on the nature of the gene.

Components:	The ORF clone is ion-exchange column purified and shipped in a 2D barcoded Matrix tube containing 10ug of transfection-ready, dried plasmid DNA (reconstitute with 100 ul of water).
Reconstitution Method:	<ol style="list-style-type: none"> 1. Centrifuge at 5,000xg for 5min. 2. Carefully open the tube and add 100ul of sterile water to dissolve the DNA. 3. Close the tube and incubate for 10 minutes at room temperature. 4. Briefly vortex the tube and then do a quick spin (less than 5000xg) to concentrate the liquid at the bottom. 5. Store the suspended plasmid at -20°C. The DNA is stable for at least one year from date of shipping when stored at -20°C.
RefSeq:	<u>NM_031168.2</u>
RefSeq Size:	1087 bp
RefSeq ORF:	636 bp
Locus ID:	16193
UniProt ID:	<u>P08505</u>
Cytogenetics:	5 15.7 cM
Gene Summary:	This gene encodes a member of the interleukin family of cytokines that have important functions in immune response, hematopoiesis, inflammation and the acute phase response. The ectopic overexpression of the encoded protein in mice results in excessive plasma cells in circulation, leading to death. Mice lacking the encoded protein exhibit abnormalities in hepatic acute phase response, some immune mechanisms, bone resorption in response to estrogen, liver regeneration and wound healing. Alternative splicing results in multiple transcript variants encoding different isoforms. [provided by RefSeq, Sep 2015]

Product images:



Circular map for MG227281