

Product datasheet for **MG226516**

Rtel1 (NM_001166668) Mouse Tagged ORF Clone

Product data:

Product Type: Expression Plasmids
Product Name: Rtel1 (NM_001166668) Mouse Tagged ORF Clone
Tag: TurboGFP
Symbol: Rtel1
Synonyms: AI451565; AW540478; Rtel
Mammalian Cell Selection: Neomycin
Vector: pCMV6-AC-GFP (PS100010)
E. coli Selection: Ampicillin (100 ug/mL)
ORF Nucleotide Sequence: >MG226516 representing NM_001166668
Red=Cloning site Blue=ORF Green=Tags(s)

TTTTGTAATACGACTCACTATAGGGCGGCCGGAATTCGTCGACTGGATCCGGTACCGAGGAGATCTGCC
GCC**CGATCGCC**

ATGCCAGGGTAGTCCTGAATGGTGTGACAGTGGATTTTCCTTTCCAGCCCTACCCATGCCAACAGGAAT
ATATGACCAAGGTGCTAGAATGTCTCCAGAAGAAAGTGAATGGCATCCTGGAGAGCCCCACAGGCACTGG
GAAGACGCTGTGCCTCCTCTGTTCCACCTTGGCCTGGCAACAACATCTCCGAGATGCAGTTTCTCCCTA
AAGATTGCTGAGAGATTCAAGGGGAATCTTTGCCAGTCGGACCTTGTATCCTGGGGAGTGTGCTG
CCGCCAGCGGAGACTCAATAGAGTGTACACAGATATCCCAAAGATCATCTATGTTCTAGAACGCACTC
CCAGCTAACTCAGGTATCCGTGAGCTTCGGAATACCGCCTACCGGCCAAGGTATGTGTCTGGGCTCC
CGGGAGCAGCTGTGATTATCATCTGAAGTGAAGAAGCAGGAGAGTAATCATGCAGATCAGTTTGTGCC
GCAAGAAGGTAGCAAGTCGCTCCTGTCAATTTCTACAACAATGTGGAAGCGAAAATTCCTGGAGCAAGATT
GGTACCCCCATCCTGGATATTGAGGACCTTGTCAAGAAATGGAAGCAAACAAAAATGTGCCATACTAC
CTTTCTCGAAACATGAAACAGCAAGCGGACATCATCTTTATGCCATACAATTACCTGTTGGATGCTAAGA
GTCGTAAGGCGCACAGCATTGACCTGAAGGGAACAGTTGTGATCTTTGATGAAGTCACAATGTGGAGAA
GATATGTGAGGAGTCAGCCTCCTTTGACTTGACTCCCCGTGATGTGGCTTCAGGACTGGAGATTATCAAC
CAGGTTTTGGAGGAACAAGCCCGGTGACTCAGCAGGGTGAACCTCAACAGGAGTTCAATTTAGACACGT
CCAGCTCAGGACTCAACATGGAGCTGGAAGACATCGCAAAGCTAAAGATGATCCTGCTTCGCTGGAGGA
GGCTATTGATGCCGTTACGCTGCCTGGGATGACAGAGGCGTCACCAAACCTGGAAGCTATATCTTCGAG
CTGTTTGTGAAGCTCAAATAACATTTCAAACAAAGGCTGCATTTTGAATCACTGGACCAGATAATCC
AGCACCTGGCAGGCCGTAAGTGTGTTTACCAACACGGCTGGGTTGCAGAAGCTTATGGACATTATCCA
GATTGTGTTTACGCGTGGACCTCCGGAAGGCAGCCCTGTTTCTGTTGGGGCTGGGTATCTCACATTCC
TATAAGGTACACATACACCCTGAAACCAGCCACCGGAGAGCAGCTAAGCGGTGATGCCTGGAGTACCA
CTGCATCCAGGAAACAAGGGAAGGTGCTGAGCTATTGGTCTTCAGTCCCAGCCAGAGTATCGGGAACT
GGTCTGCCAAGGAGTTCGTACCCTATCCTCACCAGCGGTACCCTGGCTCCACTGTCTTCTTTGCTCTG



GAGATGCAGATTCATTCCAGTCTGTCTGGAGAATCCACACATCATTGACAAGAACCAGCTCTGGGTGG
 GGATTGTCCCAGAGGCCTGATGGTGTTCAGCTAAGCTCTGCCTATGACAAAAGGTTTTCTGAAGAGTG
 TTTATCTTCCCTGGGGAAGGCTCTGAGCAACATTGCTCGCGTGGTGCCCATGGGCTTCTGGTCTTCTTC
 CCTTCTACCTGTATGAGGAAAAGCCTGGAGTTCTGGCAGGTACAAGGATTGGCCAGGAAGGTAGAGG
 CACTAAAGCCTCTGTTCTGGAACCCAGGAACAAAGGCAGCTTCTCAGAGGTCAATGATGCCTACTACCA
 ACAAGTTGCCTCCCCTGCGTCTAATGGGGCCACCTTCTAGCAGTGTGTGGGAAAAGGCCAGCGAAAGGG
 CTGGGACTCTCAGACATGAATGGTGTGGTGTGATTGTCAAGGCGCTCCCATATCTCCACGCATGGATGC
 CCCGTGTTGTCTCAAGATGCAAGTCTTGGATGAGATGAGAGGCCGGAGTGGGGTTGGAGGCCAGTGCCT
 CTCTGGGCAGGAATGGTACCAGCAGCAAGCATCCAGGGCTGTGAACCAGGCTATTGGGAGGGTTATTGCA
 CACCGCCATGACTATGGGGCCATCTTCTGTGTGACCACAGGTTGCGCTATGCTGATGCCAGGGCCAGC
 TGCCCTCTGGGTGCGCCCTACCTTAAGGTGTATGACAACTTTGGCCATGTCATCCGAGATGTGGCCCA
 GTTCTTCCGTGTTGCTCAGAAAATGATGCCTTTGCCAGTCTCAGGCTGTGACCTCAAGTGTGAGTGA
 GGAAATTTGCTCTCAAGGATGTACATTGTCCAGCTACTCCCTCTACCAGGAAAGCCATGAGTTTGG
 ATGTGCATGTGCCAGCCTGAGGCAGAAGCCATAGGATTACCAGCTGCTGGAGACTCTGAGAGCAGCCT
 GTGTGGGAGTATGAGCAGCAGACATTTCTGCCAGCAGAGACCTATGGGACTGCTAGTGCCTTAGAA
 TACAACGAGCAGAAGGCTGGGGCATCTGAGGAGCAGGCCTGGGCTCCTCCACCCATCTCTCCGGTGGC
 AGAAGAGGCTGTCTACTGAGCAAAAAGGAGGAAGGAAGAAAGTCAAGGCTGGTCAACCATCCGGAGGAAC
 AATGGCTGGCACACAGGCAGGCAGGCCAAGATGTTTCAATGGTGGCTGTGAAGCAAGCACTGAGCCAAGCT
 AACTTTGACACCTTTACCAGGCCTGCAGCACTATAAGAGTTCTGATGACTTTGAAGCCCTAGTGGCCT
 CTCTCACCTGTCTTTTGTGAGACCCCAAGAAACACACCCTGCTTAAAGGTTTCTACCAGTTTGTTCG
 ACCCCACCACAAGCAGCAGTTTGGAGACATCTGCTTCCAGCTAACAGGCCAACGATGTGGCTACCAGCCA
 GAAAGAGAGAGCTGGAGTCTAACTGACCTTGTCTGAAGGTGTAGACAGGCAGCTGGACTCTGGACAGC
 ACCTGAACCCAGGGCAGCCTCACCTGTCTGCCATCCAACCTCAAAGGATTTGGCATGTTGTGCGTCTG
 GCATCATAAGCCCTCAGTTCTACAGACCTGTGCAGACCTAATGGGCTGCCTACCACAGGCAAGGACTTG
 GAGCTCGAAGGTCCAGAGATGAGAGCCCAACTGTGCCTCCTGAGCTTACCCATGAGGACCTGAAACAG
 GGCCCTCGATGTCCAAGAAACCTGAGAAGACCCAGAGTAAGATCTCATCTTCTTTAGACAGAGGCCAGA
 TGAGAGTGTGAGGTCTGATGATACCACCCCAAAGCCCATGCAACTTCTCCTAGACTACCCCATGAGCTT
 ATGAAGCCTCATCGGAGTAAGCAA

ACGCGTACGCGGCCGCTCGAG - GFP Tag - GTTTAA

Protein Sequence:

>MG226516 representing NM_001166668
 Red=Cloning site Green=Tags(s)

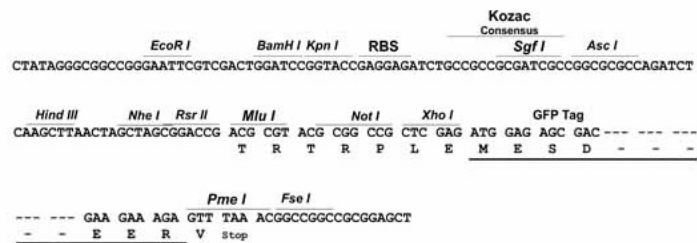
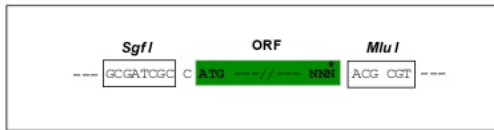
MPRVVLNGVTVDFPFQPYPCQEQYMTKVLECLQKKVNGILESPTGTGKTLCLLSTLAWQQHLRDAVSSL
 KIAERVQGELFASRTLSSWGSAAAASGDSIECYTDIPKIIYASRTHSQLTQVIRELRNTAYRPKVCVLGS
 REQLCIHPEVKKQESNHMQISLCKKVASRSCHFYNVVEAKFLEQDLATPILDIEDLVKNGSKQKMPYY
 LSRNMKQQADIIIFMPYNYLLDAKSRKAHSIDLKGTVVIFDEAHNVEKICEESASFDTLPRDVASGLEIIN
 QVLEEQRVTVQGEFQEFIVDTSSSGLNMELEDIAKLKMIILLRLEEIDAIVQLPGDDRGTVPKPSYIFE
 LFAEAQITFQTKGCIILESLDQIIQHLAGRTGVFTNTAGLQKLMIDIQIVFSVDPPEGSPGSLVGLGISHS
 YKVVIHPETSHRRAAKRSDAWSTASRKQKVLVSYWCFSPSQSMRELVCQGVRTLILTSGLAPLSSFAL
 EMQIPFPVCLENPHIIDKNQLWVGIVPRGPDGVQLSSAYDKRFSEELSSLGKALSNIRVVPVPHGLLVFF
 PSYPVMEKSLFVQVQGLARKVEALKPLFVEPRNKGSFSEVIDAYYQQVAVSPASNGATFLAVCRGKASEG
 LDFSDMNGRGVIVTGLPYPPRMDPRVVLKMQFLDEMGRSGVGGQCLSGQEWYQQQASRAVNQAIGRVIR
 HRHDYGAIFLCDHRFAYADARAQLPSWVRPYLKVYDNFGHVIRDAQFFRVAQKTMPLPVPQAVTSSVSE
 GEIALKDATLSSYSLSTRKAMSLDVHVPSLRQKPIGLPAAGDSESSLCEYEQQTFSAQQRPMGLLALE
 YNEQKAGASEEQALGSSTPSLRCEKRLSTEQKGRKKVRLVNHPEEPMAGTQAGRAKMFMAVKQALSQA
 NFDFTTQALQHYKSSDDFEALVASLTCLFAEDPKKHTLLKGFYQFVRPHHKQQFEDICFQLTGRCGYQP
 GKRELESKLTLESGVDRQLDPGQHLNQQQPHLSAHPSTKGFGMFVRRHHKQFLQTCADLMGLPTTGKDL
 ELEGPRDESPTVPELTHEDLKPGPMSKKEPKTQSKISSFFRQRPDESVRSDDTTPKPMQLPPRLPHEL
 MKPHRSKQ

TRTRPLE - GFP Tag - V

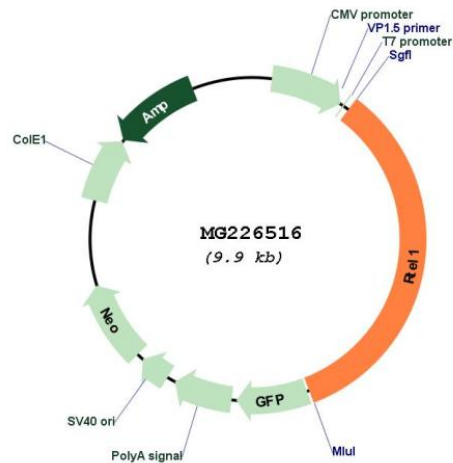
Restriction Sites: SgfI-MluI

Cloning Scheme:

Cloning sites used for ORF Shuttling:



Plasmid Map:



ACCN: NM_001166668

ORF Size: 3384 bp

OTI Disclaimer: The molecular sequence of this clone aligns with the gene accession number as a point of reference only. However, individual transcript sequences of the same gene can differ through naturally occurring variations (e.g. polymorphisms), each with its own valid existence. This clone is substantially in agreement with the reference, but a complete review of all prevailing variants is recommended prior to use. [More info](#)

OTI Annotation: This clone was engineered to express the complete ORF with an expression tag. Expression varies depending on the nature of the gene.

Components: The ORF clone is ion-exchange column purified and shipped in a 2D barcoded Matrix tube containing 10ug of transfection-ready, dried plasmid DNA (reconstitute with 100 ul of water).

Reconstitution Method:

1. Centrifuge at 5,000xg for 5min.
2. Carefully open the tube and add 100ul of sterile water to dissolve the DNA.
3. Close the tube and incubate for 10 minutes at room temperature.
4. Briefly vortex the tube and then do a quick spin (less than 5000xg) to concentrate the liquid at the bottom.
5. Store the suspended plasmid at -20°C. The DNA is stable for at least one year from date of shipping when stored at -20°C.

RefSeq: [NM_001166668.1](#), [NP_001160140.1](#)

RefSeq Size: 4208 bp

RefSeq ORF: 3387 bp

Locus ID: 269400

UniProt ID: [Q0VGM9](#)

Cytogenetics: 2 H4

Gene Summary:

ATP-dependent DNA helicase implicated in telomere-length regulation, DNA repair and the maintenance of genomic stability. Acts as an anti-recombinase to counteract toxic recombination and limit crossover during meiosis. Regulates meiotic recombination and crossover homeostasis by physically dissociating strand invasion events and thereby promotes noncrossover repair by meiotic synthesis dependent strand annealing (SDSA) as well as disassembly of D loop recombination intermediates. Also disassembles T loops and prevents telomere fragility by counteracting telomeric G4-DNA structures, which together ensure the dynamics and stability of the telomere.[UniProtKB/Swiss-Prot Function]