

## Product datasheet for **MG226035**

### Magi1 (NM\_001029850) Mouse Tagged ORF Clone

#### Product data:

|                           |  |
|---------------------------|--|
| Product Type:             | Expression Plasmids  |
| Product Name:             | Magi1 (NM_001029850) Mouse Tagged ORF Clone                                    |
| Tag:                      | TurboGFP   |
| Symbol:                   | Magi1  |
| Synonyms:                 | AIP3; Baiap1; BAP1; Gukmi1; Magi-1; MAGI1c; mKIAA4129; TNRC19; WWP3            |
| Mammalian Cell Selection: | Neomycin   |
| Vector:                   | pCMV6-AC-GFP (PS100010)  |
| E. coli Selection:        | Ampicillin (100 ug/mL)   |
| ORF Nucleotide Sequence:  | >MG226035 representing NM_001029850<br>Red=Cloning site Blue=ORF Green=Tags(s) |

TTTTGTAATACGACTCACTATAGGGCGGCCGGAATTCGTCGACTGGATCCGGTACCGAGGAGATCTGCC  
GCC**CGATCGCC**

ATGTCAAAGTGATCCAGAAGAAGAACCCTGGACTGGCCGCGTTACAGAGTGCACCGTGAAGCGGGGAC  
CCCAGGGCGAGCTGGGGGTGACGGTCTGGGGGGCGGGAGCATGGGGAGTTTCCGTACGTGGGGCGGT  
GGCGGGCGCCGAGGCGGGGGTCCCGCGGTGGCGAGGGGCCAAGCTGGCCGAAGGTGAGCTGCTG  
CTGGAGGTGCAGGGGTCCGGGTGTCGGCTTGCCTCGCTATGACGTGCTGGGAGTCATCGACAGCTGCA  
AGGAGGCCGTACCTTCAAAGCCGTGACACAAGGAGGAAGGCTCAACAAGGACCTACGACATTTCTCAA  
CCAACGGTTCAGAAGGGTCTCCAGATCATGAGCTCCAGCAGACCATAAGGGACAACCTTACCGCCAT  
GCTGTGCCTTGCACAACCCGGTCTCCAGAGAAGGAGAAGTGCCTGGTGTGGATTACAGTCTTCTGACTG  
TGAAGGAGTCTTGGACCTCGAGCAGAGCGGGACCCTGTTGGAAGTCGGCACCTATGAAGAAACTATTA  
TGGGACACCCAACTCTAGCCAGCCAGTCAGTGGGAAAGTGATCACGACGGATGCCTTGACAGCCCTG  
CAGTCTGGCTCCAAGCAGTCGACCCCTAAGCGAACAAAGTCTACAATGATATGCAAAATGCTGGCATAG  
TCCACCCGAGAAATGAGGAGGAGGAGTGTCCCTGAAATGAACAGTAGCTTTACAGCCGACTCTGGAGA  
CCAGGACGAGCACACTCTCCAAGAAGCAACGCTCCCGCCTGTGAATAGTAGCATCTCGTGTCTCCATC  
ACGGACCTTCTCAGAAGTCCCTCAGTACCTACCTCTTCTGACAGGATAATTTAGGTCTCTACCTG  
AAAATGGGAGATGGCTATACTGAAAATGGAGAAGTCTATTTTCATAGACCACAACACGAAAACAATC  
ATGTTAGACCTCGGTGCCTGAACAAACAGCAGAAGCCTCTGGAAGAATGTGAAGATGATGAAGGGGTA  
CACACCGAGGAGCTGGACAGTGAAGTAGAGTTGCCTGCTGGTGGGAAAAGATTGAAGACCTGTCTACG  
GTGTCTACTATGTAGACCACATCAACAGGAAGACGCAATATGAAAACCCAGTCTAGAAGCCAAACGGAA  
GAAACAGCTTGAACAGCAGCAGCAACAGCAGCAGCCTCAGCCACCGCAGCCAGAAGAGTGGACAGAGGAT  
CATGCATCTGTTGTCCTCTGTTGCTCTTCCATCCCCGAGCAATCCGGAGCCAGCCAGGGAAACTC  
CACTTCAGGGCAAACCTTTTTTACAAGAAACCCCTCTGAGCTGAAAGGCAAGTTCATTCACACGAAGCT  
ACGGAAAAGCAGCCGAGGCTTTGGCTTACGGTGGTTGGAGGAGACGAGCCTGATGAGTCTGCAGATC



[View online »](#)

AAGAGCCTCGTCCTCGATGGTCCTGCCGCACTGGATGGCAAGATGGAGACAGGGGATGTAATTGTGAGTG  
TGAATGACACCTGTGTTTTGGGACACACATGCTCAAGTTGTGAAAATCTTCCAGTCCATTCCCATTGG  
TGCCAGTGTGGACCTTGAACCTGCAGAGGTTATCCATTGCTTTTGACCCGGATGACCCTAATACAAGT  
TTAGTGACCTCGGTGGCCATTTTGGACAAAAGAACAATTATTGTAATGGACAAGAGACCTACGATTAC  
CAGCGAGCCACAGTAGTAAACAGGCAAGTCAAGTCAAGTCAAGTCAAGTCAAGTCAAGTCAAGTCAAGT  
TGTGGCTTCCAACAGCTCTCATGGTTATCCCAACGACACAGTCTCCTTGGCTTCTCCATAGCCACCCAG  
CCAGAGCTAATAACTGTTACATAGTCAAAGGGCCAATGGGATTTGGCTTTACGATCGCAGACAGTCCCG  
GTGGGGGTGGCCAAAGAGTGAAACAGATTGTTGACAGTCCACGCTGCAGAGGCCTCAAAGAAGGGGATCT  
TATCGTGGAGGTGAATAAGAAGAACGTGACAGGCCCTGACGCACAATCAAGTCGTGGATATGCTGATTGAA  
TGTCCCAAGGGAAGTGAGGTCACTGTTGGTGCAGCGAGGAGGGCTACCAGTCCCAAGAAGAGCCCAA  
AGTCGCAGCCACTGGAGAGGAAAGACAGCCAGAAATAGCTCCCAGCACAGCGTCTCCAGCCACCGGAGCCT  
GCACACTGCGTCCCCGAGCCACGGCATAACAGTGTCCCTGAGTACCTACCTGCAGACGCCCTGCTCCA  
GATCAGACCGACAGCTCTGGGCAGAAAAGCCAGATCCTTTTAAAATCTGGGCCAGTCCAGGAGCATGT  
ATGAAAACCGACCTATGTCACCTTCGCCTGCATCAGGATTGAGCAAGGGTAAAGAGACAGAAAATCAA  
TTCCACGAATTTTGGAGAATGTGAGATTCCAGATTACCAGGAACAGGACATCTTCTCTGGAGAAAAGAA  
ACCGGATTTGGATTTAGGATTCTGGGTGAAAATGAACCAGGGGAACCCATTTATATCGGTACATCGTAC  
CGCTGGGTGCTGCTGACACAGACGGCCGCTGAGGTCTGGAGATGAATTAATCTGTGTGGATGGGACACC  
AGTAATTGGGAAATCACACCAGCTCGTGGTCCAGCTTATGCAACAAGCTGCCAAGCAAGGCCATGTCAAT  
CTCACAGTGAGGCGGAAAGTGGTCTTTGCCGTCCCAAAGCAGAGAATGAGGTGCCCTCACCAGCCTCAT  
CACACCACAGTAGCAACCAGCCCGCTCCCTGACGGAGGAGAAACGCACACCCGAAGGCAGCCAGAACTC  
TCTGAACACTGTGAGCTCTGGCAGCGGCAGCACCAGTGGCATTGGCAGTGGTGGCGGGGGGACGCGGT  
GTGGTGAGCGCTGTGCTGCAGCCCTATGATGTGGAGATTGGCGTGGGGAGAACGAGGGCTTTGGGTTG  
TCATCGTCTCCTCGTGAGCAGACCCGAAGCGGGCACAACCTTCGGTGGATTATTGAGGGAGCCCTGC  
TGACCGCTGTGGCAAGCTGAAAGTAGGAGACCGGATCTTGGCAGTAAATGGATGTTCCATACCAACAAA  
TCCATTCTGACATTGTCAACCTAATCAAAGAAGCGGGCAACACAGTGACTCTCCGCATCATCCCCGGGG  
ATGAGTCTCAAATGCCAGCTGCTGACTAATGCTGAGAAGATTGCCACCATCACCACCCTCATGCCCC  
CTCTCAGCAGGGGACCCAGGAAACAAGGACCACCACAAACCAAGCAGGATTCTCAGTTTGAGTTCAA  
GGACCGCAGGCTGCACAGGAGCAAGATTCTACACTGTGGAATTGGAAAGAGGGGGCAAGGGATTTGGCT  
TTAGTCTTCGAGGGGGCCGAGAATATAACATGGATCTTTATGTTCTGCGCTTGGCAGAGGATGGTCTGC  
AGAAAGATGTGGGAAGATGAGGATTGGCGATGAAATTCTAGAGATCAATGGTGGAGACCACCAAAAACATG  
AAACACTCTCGGGCCATAGAAGTATCAAGAATGGCGGCCGAGGTCCTGTTCTGCGGGGGGAG  
ACGGCTCAGTCCCAGAATATGACCCAGCAGCGACAGGAACGGCCCTCCACCGGTGCACAAGGTGTTCC  
GGAAGTGAGGCCGGGGCCGACAGCCACAGACCCATCCAGCCTTGGAGTCCAGTTACCCACCCGAACT  
CACAAATCATACAACATGCCGAAAAGCGAGCACACGCGAAGGATCCAAAAGGCAACAGGGAGCACAGCA  
AACAAACCAACGAACATCACACCTGGAATGGAACCTTCTAGAAAACAGGACAGCGGGGATGCCGGCCAA  
AGACCGGCCACCCGACGCATGGAGAGAGGCGCAGCCAGAGCGGACAGCCACCAATGGTTCAAAGAGGAGG  
TCACCGGAGAAGCGCAGGGAAGGCACCCGACGCGCTGACAACACTTTGAAAGAAGGGAGAAGCATGAGA  
AGAGAAGAGAGATATCTCCGAGAGGAAGCGAGAGCGTTACCCACCCGAGAAAAGATAGTCCCCGAG  
CCGCGGGCGGAGGTCCTCGAAAGACTCCTGGATCAAAGACGGTCCCCAGAGCGCAGAAGAGGGGGCTCC  
CCGAGAGGAGAGCCAAATCCACCGACAGGAGGAGGGCCAGGTCCCTGAGCGCAGGCGAGAGCGGTAC  
TGGACAAAAGGAACCGGACGACAAGGTTGGCCACCGAGAAGAGAGGAGGCTGGTCTGAAGCTGGAAGC  
GGGGAGAAGCCCGAAATCCCCAGAGCAGAGAAGGCGGCTTACAAAGAATGTAGCACCACCTCAGC  
ATC

ACGCGTACGCGGGCCGCTCGAG - GFP Tag - GTTTAA

**Protein Sequence:** >MG226035 representing NM\_001029850  
 Red=Cloning site Green=Tags(s)

```

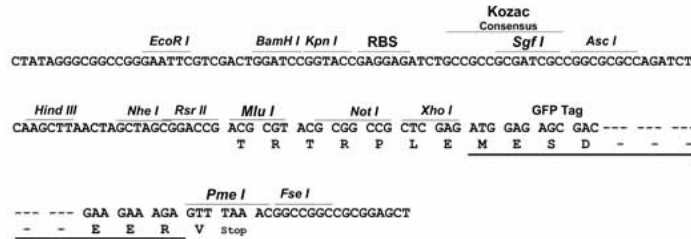
MSKVIQKKNHWTGRVHECTVKRGPQGELGVTVLGGAEHGEFFPYVGAVAAEAAGLPGGGEGPKLAEGELL
LEVOGVRVSGLPRYDVLVIDSKEAVTFKAVRQGGRLNKDLRHFLNQRFKQKSPDHELQQTIRDNL YRH
AVPCTTRSPREGEVPGVDYSFLT VKEFLDLEQSGTLLEVGTYEGNYYGTPKPPSQPVSGKVVITTDALHSL
QSGSKQSTPKRRTKSYNDM QNAGIVHPENEEEDVPEMNSSFTADSGDQDEHTLQEATLPPVNSSILAAPI
TDP SQKFPQYLPLSAEDNLG LPLPENWEMAYTENGEVYFIDHNTKTT SWLDPRCLNKQQKPLEE CEDDEGV
HTEELDSELELPAGWEKIEDPVYGVYVVDHINRKTQYENPVLEAKRKKQLEQQQQQQQPQPPEEWTE
HASVVPVAPSHPPSNPEPARETPLQGKPFTRNPSELKGF IHTKLRKSSRGFGFTVVGDEPDEF LQI
KSLVLDGPAALDGKMETGDVIVSVNDTCV LGHHAQVVKIFQSIPIGASVDLELCRGYPLPFPDDPNTS
LVT SVAILDKEPIIVNGQETYDSPASHSSKTGKVSSMKDARPSSPADVASNSSHGYPNDTVSLASSIATQ
PELITVHIVKGP MFGFTIADSPGGGQ RVKQIVDSPRCRGLKEGDLIVEVNKKNVQAL THNQVVDMLIE
CPKGSEVTL L VQRGGLPVPKKSPK SQPLERKDSQNSSQHSVSSHRSLHTASPSHGIQVLP EYLPADAPAP
DQTDSSGQKPKDPFKIWAQSRSMYENRPMSP SPASGLSKGERDREINSTNFGECQIPDYQE QDIFLWRKE
TGFGRILGGNEPGEPIYIGHIVPLGAADTDGRLRSGDELICVDGTPVI GKSHQLV VQLMQQAAKQGHVN
LTVRRKVVFAVPAKAENEVPSPASSHSSNQPASL TEEKRTPQGSQNSLNTVSSGSGSTSGIGSGGGGGSG
VYSAVLQPYDVEIRRGENE GFGFVIVSSVSRPEAGTTFGR IIEGSPADRCGKLVGDRILAVNGCSITNK
SHSDIVNLIKEAGNTVTLRIIPGDESSNATLL TNAEKIATITTT HAPSQQGTQETRTTTTKPKQDSQFEFK
GPQAAEQDFYTVELERGA KGFGLRGGREYNMDL YVLR LAEDGPAERCGMKRIGDEILEINGETTKNM
KHSRAIELIKNGRRVRLFLRRGDG SVPEYDPSDRNGPSTGAQGVPEVRPGPPDHRPHPALESSYPPEL
HKSSQHAEKRAHAKDPKGNREHSKQPNEHHTWNGT SRKQDSGACRPKDRPPDAWREAQPERTATNGSKRR
SPEKRREGTR SADNTLERREKHEKRREI SPERKRERSPTRRKDSSPSRRRRSLERLLDQRRSPERRRGG
PERRAKSTDRRRARS PERRRRSLDKRNRDDKVGHRERE EAGLKLEAGRSPRNPPEQRRR PYKECSTDLS
I
  
```

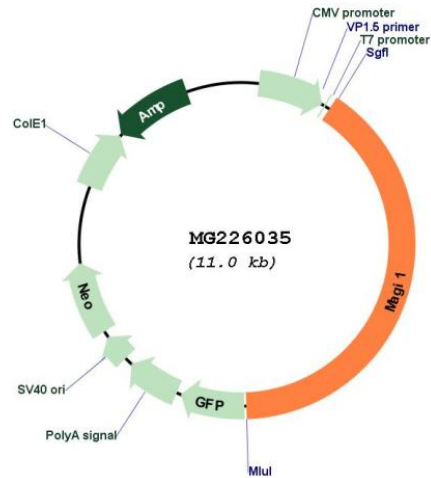
TRTRPLE - GFP Tag - V

**Restriction Sites:** SgfI-MluI

**Cloning Scheme:**

Cloning sites used for ORF Shutting:



**Plasmid Map:**


**ACCN:** NM\_001029850

**ORF Size:** 4413 bp

**OTI Disclaimer:** The molecular sequence of this clone aligns with the gene accession number as a point of reference only. However, individual transcript sequences of the same gene can differ through naturally occurring variations (e.g. polymorphisms), each with its own valid existence. This clone is substantially in agreement with the reference, but a complete review of all prevailing variants is recommended prior to use. [More info](#)

**OTI Annotation:** This clone was engineered to express the complete ORF with an expression tag. Expression varies depending on the nature of the gene.

**Components:** The ORF clone is ion-exchange column purified and shipped in a 2D barcoded Matrix tube containing 10ug of transfection-ready, dried plasmid DNA (reconstitute with 100 ul of water).

**Reconstitution Method:**

1. Centrifuge at 5,000xg for 5min.
2. Carefully open the tube and add 100ul of sterile water to dissolve the DNA.
3. Close the tube and incubate for 10 minutes at room temperature.
4. Briefly vortex the tube and then do a quick spin (less than 5000xg) to concentrate the liquid at the bottom.
5. Store the suspended plasmid at -20°C. The DNA is stable for at least one year from date of shipping when stored at -20°C.

**RefSeq:** [NM\\_001029850.4](#), [NP\\_001025021.1](#)

**RefSeq Size:** 7791 bp

**RefSeq ORF:** 4416 bp

**Locus ID:** 14924

**UniProt ID:** [Q6RHR9](#)

**Cytogenetics:** 6 D1

**Gene Summary:** May play a role as scaffolding protein at cell-cell junctions. May regulate acid-induced ASIC3 currents by modulating its expression at the cell surface.[UniProtKB/Swiss-Prot Function]