

Product datasheet for **MG225472**

Stat2 (NM_019963) Mouse Tagged ORF Clone

Product data:

Product Type:	Expression Plasmids
Product Name:	Stat2 (NM_019963) Mouse Tagged ORF Clone
Tag:	TurboGFP
Symbol:	Stat2
Synonyms:	1600010G07Rik; AW496480
Mammalian Cell Selection:	Neomycin
Vector:	pCMV6-AC-GFP (PS100010)
E. coli Selection:	Ampicillin (100 ug/mL)



[View online »](#)

ORF Nucleotide Sequence:

>MG225472 representing NM_019963
 Red=Cloning site Blue=ORF Green=Tags(s)

TTTTGTAATACGACTCACTATAGGGCGGCCGGGAATTCGTCGACTGGATCCGGTACCGAGGAGATCTGCC
 GCC**CGCATCGCC**

ATGGCGCAGTGGGAGATGTTGCAGAACCTTGACAGCCTGTTCTGGACCAGTTACACCAGGTCTACTCAC
 AGAGCATCCTGCCAATGGACGTTTCGACAGCATTGGCTACCTGGATTGAAGACCAGAAGTGGAGGGAAGC
 TGGCTGGGCAAGTATGACGCCAAGGCCAATGCTATACTTCAGCATCCTGGACCAACTGAACCAAGTGG
 GACCACTACAGCTCAGACTCCAATCACTTTTTATTACAGCATAACTTGCGAAAATTCAGCCGGGATATTC
 AGACCTTTCCCAATGGCCCTACCCAGTTGGCTGAGATGATCTTTAATCTTCTTCTGGAAGAGCAAAGGAT
 TCTGAATCAGGCTCAAAGAGCTCAAGAGGTGCAGCCCCACCAGCCCCGAAGCAGTTGTGGAGAGCCAG
 CAGCTTGAGATTGAAAATCGAATCCAGGGTTACATGTGGACATTGAGTCTTGGTGAGATCCATCAGGC
 AGCTGAAGGACGAACAGGATGTCTTCAGCTTCAGATACACAGTTTTTCAGTCTGAAGAAGAGCTCGTCTTC
 AGACCCCATCAGAGCCAACAGGCGCAGCTTGTGCAGGCAACAGCCAACAAGTGCAGAGAATGAGAAAAG
 GAGGTGCTGGACATCTCCAAGGACTGGTTGGCCGATTAAACCACCTGGTCGACCTATTGCTGCCCAAGC
 TGGACGAGTGGAAAGTGCAGCAGCAGAAGTCTGCATTGGAGCCCCGCCCCCGAGCTGCAGCTGGAAACA
 GCTGGAACAGTGGTTGACGGCTGGAGCAAAGTTCTTGTCCACCTTCGGCAGCTACTGAAGCAGCTGAAG
 GAGATGAGTCACATGCTTCGGTATAAGGGTGACATGTTTGGCCAAAGGGTGGACCTGCAGAATGCCCAAG
 TCATGGAGTTACTTCAGCGTCTGCTCCAAGGTCCTTTGTAGTAGAAACCCAGCCCTGCATGCCCCAGAC
 TCTCCACCGACCCCTCATCCTGAAGACTGGGAACAAGTTCACCGTCCGAACAAGACTTCTGGTGAGACTC
 CAGGAAGGCAGCGAATCACTCAAAGCAGAAGTCTCTGTCGACAGGAATTCAGACTTACCAGGCTTCCGGA
 AGTTCAACATTTGACCTCAAACCAAAAAACCTTGACCCCGAGGAGGGCCAGAGACAGGGCTTAATTTG
 GGACTTCGGCTTCTTACTCTGGTGGAGCAACCGCTGTGGGTGCAGGAAAGGGCAACAAGGGGCCGCTG
 GCAGTGACAGAGGAGTTACATGTCATCAGCTTCGTGGTTGAGTACGTGTACCAGGGTCTGAAGATGAAGC
 TGCAGACGGACTCTCCCTGTTGTGATTATTTCTAACATGAACCAACTCTCCATTGCTGGGCCTCCAT
 TCTCTGGTTCAACATGCTCAGCCAAAATCCCAAGAACCAGCAGTTCTTCTGCCAAGCTCCGAAAGCCCC
 TGGAGTTTGTGGGACCTGTGCTCAGCTGGCAGTTCTCCTTACGTTGGCCGAGGCCTCGATTCTGAGC
 AGCTGGGCATGCTGAGAACAAGCTGTTTGGAAAGAGCTGCAAGATGGAGGATGCGCTGTTGTCTGGGT
 AGACTTTTGAAGCGAGAGAGCCCCCTGGTAAGATCCCTTTCTGGACCTGGCTGGACAAAATTCTGGAG
 CTGGTGACAGCACCTGAAGGATCTCTGGAAGGATGGGCGCATCATGGGCTTTGTGAGCCGAACCAGG
 AACGCAGACTGCTGAAGAAGATGTTGTCTGGCACCTTCTACTGCGCTTCAAGTAACTTCTGAAGGGGG
 CATTACTTGTCTTGGGTGGAGCACCAGGATGACGATAAAGTCAAAATCTACTCAGTGCAGCCCTACACC
 AAGGAAGTGTACAGTCACTCCCACTGACAGAGATCATCCGCCACTACCAGGTTCTTGGCAGAGAGAACA
 TCCCCGAGAACCCTCCGCTTCTCTATCCCCGAATCCCTCGGGACGAAGCTTTTGGGTGTTACTACCA
 GGAAAAAGTTAATTTTGAAGAACAGAGGAAATATTTGAAACATAAACTCATTGTGATCTCTAACAGACAG
 GTGGACGAGCTGCAGCAGCCTCTGGAGCTCAAACAGGATTCAGAGTCCTTAGAAGTGAATGCAGAGCTCT
 TGTTAGCACACGACCAGGAGTTGCCATTGATGATGCAGACTGGGCTGGTCTGGGCACAGAGCTGAAAGT
 GGACCCATACTGAGTACAGCCCCACAAGTCTGCTGGAGCCAGCCCCACAAGTCTGCTGGAGCCAGCC
 CACAAGTCCCGCTGGAGCCAGCCCCACAAGTCTGCTGGAGCCAGCCCCACAAGTCTGCTGGAGCCAG
 CCCCCACAAGTCTGCTGGAGCCAGCCCCACAAGTCTGCTGGAGCCAGCCCCACAAGTCCAGCTGGAGCC
 AGCCCCACAAGTCTGCTGGAGCTAGCCCCACAAGTCTGCTGGAGCCAGCCCCACAAGTCTGCTGGAG
 CTAGCCCCACAAGTCCAGCTGGAGCCAGCACACTTGTGCAGCAGCCATCAGAGTCAAGTTTGCCTGAGG
 ACCTGCAGCAGATTAGCGTGGAGGATCTGAAAAAATTAAGCAACCCGAGTACTGAATACATCACAAACCA
 CGAAAACCCAATGTTGGCTGGCGAGAGCAGTGGAGATGAGACTTCCATACCCTACCACAGCCATTTGAT
 GCGGATGGACTCTGGGATGGACTCTTGATACCTTC

ACGCGTACGCGGCCGCTCGAG – GFP Tag – GTTTAA

Protein Sequence: >MG225472 representing NM_019963
 Red=Cloning site Green=Tags(s)

MAQWEMLQNLDLFLDQLHQVYSQSILPMDVVRQHLATWIEDQNWREAALGSDDAKANMLYFSILDQLNQW
 DHYSSDSNHFLQLHNLKFKSRDIQTFPNGPTQLAEMIFNLLLEEQRILNQAQRAQEVQPPPAPEAVVESQ
 QLEIENRIQGLHVDIEFLVRSIRQLKDEQDVFSFRYTVFSLKKTSSSDPHQSQAQLVQATANKVDRMRK
 EVLDISKGLVGRLLTLDLLPKLDEWKVQQQKSCIGAPPELQLEQLEQWLTAGAKFLFHLRQLLKQLK
 EMSHMLRYKGMDFGQGVLDLQNAQVMELLQRLLQRSFVVEQPCMPQTLHRPLILKTGNKFTVRTRLLVRL
 QEGSESLKAEVSDRNSDLPGFRKFNILTSNQKTLTPEEGQRQGLIWDGFGLTLVEQRAVAGKGNKGPL
 AVTEELHVISFVVEVYVYQGLKMKLQTDLTPVVIISNMNQLSIAWASILWFNMLSPNPKNQFFCQAPKAP
 WSLGVPVLSWQFSSYVGRGLDSEQLGMLRTKLFKGSCKMEDALLSWVDFCKRESPPGKIPFWTLDKILE
 LVHDHLKDLWKDGRIMGFVSRNQERRLLKMLSGTFLLRFSETSEGGITCSWVEHQDDDKVEIYSVQPYT
 KEVLQSLPLTEIIRHYQVLAENIPENPLRFLYPRIPRDEAFGCYYQEKVNFEEQRKYLKHKLIVISNRQ
 VDELQQPLELKQDSESLVNAELLLAHDQELPLMMQTLGLVLTGTELKVDPIILSTAPQVLLPAPQVLLPAP
 PQVPLEPAPQVLLPAPQVLLPAPQVLLPAPQVLLPAPQVLLPAPQVLLPAPQVLLPAPQVLLPAPQVLLP
 LAPQVQLEPAHLLQPPSESDLPEDLQQISVEDLKKLSNPSTEYITTNENPMLAGESSSGDETSIPYHSHFD
 ADGLLGWTLDTF

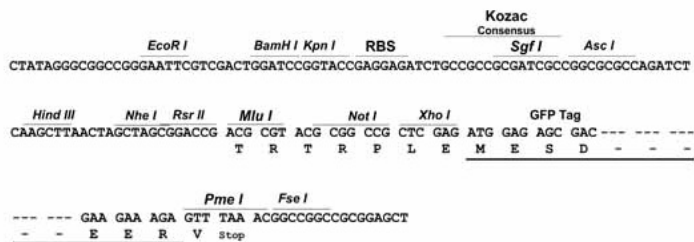
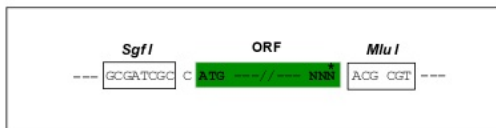
TRTRPLE – GFP Tag – V

Restriction Sites:

SgfI-MluI

Cloning Scheme:

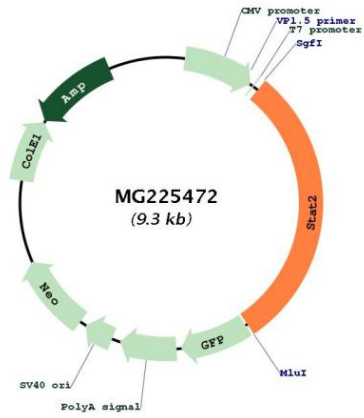
Cloning sites used for ORF Shuttling:



ACCN: NM_019963

ORF Size:	2766 bp
OTI Disclaimer:	<p>Due to the inherent nature of this plasmid, standard methods to replicate additional amounts of DNA in E. coli are highly likely to result in mutations and/or rearrangements. Therefore, OriGene does not guarantee the capability to replicate this plasmid DNA. Additional amounts of DNA can be purchased from OriGene with batch-specific, full-sequence verification at a reduced cost. Please contact our customer care team at custsupport@origene.com or by calling 301.340.3188 option 3 for pricing and delivery.</p> <p>The molecular sequence of this clone aligns with the gene accession number as a point of reference only. However, individual transcript sequences of the same gene can differ through naturally occurring variations (e.g. polymorphisms), each with its own valid existence. This clone is substantially in agreement with the reference, but a complete review of all prevailing variants is recommended prior to use. More info</p>
OTI Annotation:	This clone was engineered to express the complete ORF with an expression tag. Expression varies depending on the nature of the gene.
Components:	The ORF clone is ion-exchange column purified and shipped in a 2D barcoded Matrix tube containing 10ug of transfection-ready, dried plasmid DNA (reconstitute with 100 ul of water).
Reconstitution Method:	<ol style="list-style-type: none"> 1. Centrifuge at 5,000xg for 5min. 2. Carefully open the tube and add 100ul of sterile water to dissolve the DNA. 3. Close the tube and incubate for 10 minutes at room temperature. 4. Briefly vortex the tube and then do a quick spin (less than 5000xg) to concentrate the liquid at the bottom. 5. Store the suspended plasmid at -20°C. The DNA is stable for at least one year from date of shipping when stored at -20°C.
RefSeq:	NM_019963.2
RefSeq Size:	4402 bp
RefSeq ORF:	2769 bp
Locus ID:	20847
Cytogenetics:	10 76.5 cM

Product images:



Circular map for MG225472