

Product datasheet for **MG224787**

Tnfsf12 (NM_011614) Mouse Tagged ORF Clone

Product data:

Product Type: Expression Plasmids
Product Name: Tnfsf12 (NM_011614) Mouse Tagged ORF Clone
Tag: TurboGFP
Symbol: Tnfsf12
Synonyms: Apo3l; Dr3l; Dr3lg; Tweak
Mammalian Cell Selection: Neomycin
Vector: pCMV6-AC-GFP (PS100010)
E. coli Selection: Ampicillin (100 ug/mL)
ORF Nucleotide Sequence: >MG224787 representing NM_011614
Red=Cloning site Blue=ORF Green=Tags(s)

TTTTGTAATACGACTCACTATAGGGCGGCCGGGAATTCGTCGACTGGATCCGGTACCGAGGAGATCTGCC
GCC**CGATCGCC**

ATGGCCGCCCGTTCGGAGCCAGAGGCGGAGGGGGCGCCGGGGGAGCCGGGCACCGCCCTGCTGGCCCCGC
TGGTGCTGAGCCTGGGCCTGGCGCTGGCCTGCCTTGGCCCTCTGCTGGTCTGGTCTGAGCCTGGGAGCTG
GGCAACGCTGTCTGCCAGGAGCCTTCTCAGGAGGAGCTGACAGCAGAGGACCGCCGGGAGCCCCCTGAA
CTGAATCCCAGACAGAGAAAGCCAGGATGTGGTACCTTCTTGAACAACCTAGTCCGGCCTCGAAGAA
GTGCTCCTAAAGCCGGAAGGCGCGCCCTCGCCGAGCTATTGCAGCCATTATGAGGTTTCATCTCGGCC
AGGACAGGATGGAGCACAAAGCAGGTGTGGATGGGACAGTGAAGTGGCTGGGAAGAGACCAAAATCAACAGC
TCCAGCCCTCTGCGCTACGACCGCCAGATTGGGAATTTACAGTCATCAGGGCTGGGCTCTACTACCTGT
ACTGTCAGGTGCACTTTGATGAGGGAAAGGCTGTCTACCTGAAGCTGGACTTGCTGGTGAACGGTGTGCT
GGCCCTGCGCTGCCTGGAAGAAATCTCAGCCACAGCAGCAAGCTCTCCTGGGCCCCAGCTCCGTTTGTGC
CAGGTGTCTGGGCTGTTGCCGCTGCGGCCAGGGTCTTCCCTTCGGATCCGCACCCCTCCCTGGGCTCATC
TTAAGGCTGCCCCCTTCTAACCTACTTTGGACTCTTTCAAGTTCAC

ACGCGTACGCGGCCGCTCGAG - GFP Tag - GTTTAA



[View online »](#)

Protein Sequence: >MG224787 representing NM_011614
Red=Cloning site Green=Tags(s)

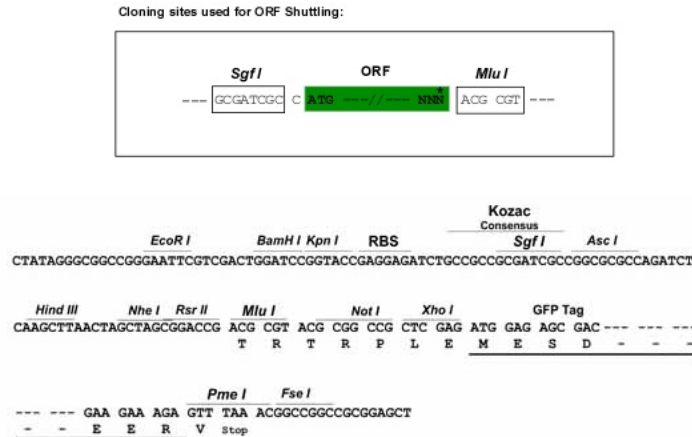
MAARRSQRRRGRGEPGTALLAPLVLSLGLALACLGLLLVVVSLGSWATLSAQEPSQEELTAEDRREPPE
 LNPQTEESQDVVPFLEQLVRPRRSAPKGRKARPRRAIAAHYEVHPRPGQDGAQAGVDGTVSGWEETKINS
 SSPLRYDRQIGEFVIRAGLYLYLCQVHFDEGKAVYKLDLLVNGVLALRCLEEFATAAASSPGQLRLC
 QVSGLLPLRPGSSLRIRTLPPWAHLKAAPFLTYFGLFQVH

TRTRPLE - GFP Tag - V

Chromatograms: https://cdn.origene.com/chromatograms/ja1728_h08.zip

Restriction Sites: SgfI-MluI

Cloning Scheme:



ACCN: NM_011614

ORF Size: 747 bp

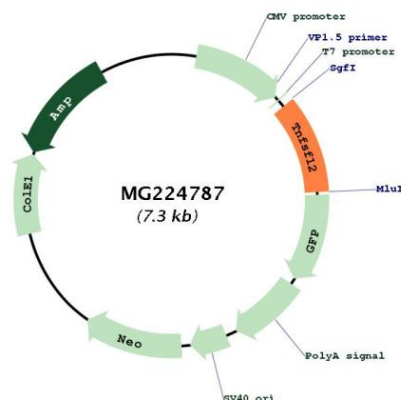
OTI Disclaimer: Due to the inherent nature of this plasmid, standard methods to replicate additional amounts of DNA in *E. coli* are highly likely to result in mutations and/or rearrangements. Therefore, OriGene does not guarantee the capability to replicate this plasmid DNA. Additional amounts of DNA can be purchased from OriGene with batch-specific, full-sequence verification at a reduced cost. Please contact our customer care team at custsupport@origene.com or by calling 301.340.3188 option 3 for pricing and delivery.

The molecular sequence of this clone aligns with the gene accession number as a point of reference only. However, individual transcript sequences of the same gene can differ through naturally occurring variations (e.g. polymorphisms), each with its own valid existence. This clone is substantially in agreement with the reference, but a complete review of all prevailing variants is recommended prior to use. [More info](#)

OTI Annotation: This clone was engineered to express the complete ORF with an expression tag. Expression varies depending on the nature of the gene.

Components:	The ORF clone is ion-exchange column purified and shipped in a 2D barcoded Matrix tube containing 10ug of transfection-ready, dried plasmid DNA (reconstitute with 100 ul of water).
Reconstitution Method:	<ol style="list-style-type: none">1. Centrifuge at 5,000xg for 5min.2. Carefully open the tube and add 100ul of sterile water to dissolve the DNA.3. Close the tube and incubate for 10 minutes at room temperature.4. Briefly vortex the tube and then do a quick spin (less than 5000xg) to concentrate the liquid at the bottom.5. Store the suspended plasmid at -20°C. The DNA is stable for at least one year from date of shipping when stored at -20°C.
RefSeq:	NM_011614.3
RefSeq Size:	1515 bp
RefSeq ORF:	750 bp
Locus ID:	21944
UniProt ID:	O54907
Cytogenetics:	11 B3
Gene Summary:	Binds to FN14 and possibly also to TNRF5F12/APO3. Weak inducer of apoptosis in some cell types. Mediates NF-kappa-B activation. Promotes angiogenesis and the proliferation of endothelial cells. Also involved in induction of inflammatory cytokines. Promotes IL8 secretion (By similarity).[UniProtKB/Swiss-Prot Function]

Product images:



Circular map for MG224787