

Product datasheet for **MG223250**

Art3 (NM_181728) Mouse Tagged ORF Clone

Product data:

Product Type:	Expression Plasmids
Product Name:	Art3 (NM_181728) Mouse Tagged ORF Clone
Tag:	TurboGFP
Symbol:	Art3
Synonyms:	4930569O04Rik; ARTC3
Mammalian Cell Selection:	Neomycin
Vector:	pCMV6-AC-GFP (PS100010)
E. coli Selection:	Ampicillin (100 ug/mL)
ORF Nucleotide Sequence:	>MG223250 representing NM_181728 Red=Cloning site Blue=ORF Green=Tags(s)

TTTTGTAATACGACTCACTATAGGGCGGCCGGAATTCGTCGACTGGATCCGGTACCGAGGAGATCTGCC
GCC**CGATCGCC**

ATGAAGATGGGACATTTTGAAATGGTCACCACGCTGCTGGCAGCCGAGTTCTAATGGACATCTTCCAGG
TGAAGGCGGAAGTGTTAGACATGGCAGAGAACCGTTTTGACGACGAATACCTGAAGTGCAAAAGCAGAAT
GGAATCGAAGTATATCCGCAGATGAAGAGGGAGGAGTGGCAAACGATGCGCTCCTGCGGATGGTGTGG
GACAATGCGGAGATCCAGTGGGAAGCGCGGAAGGCTCAGCTCTTCTCCCTAGAACTTCAAGGACACCT
ATGGCATAGCTCTGACGGCCTACGTGAATGAGGCTCAAGAGCAGACTTCTTCTACCACACATTCAGCAG
CGCTGTGAAGATGGCCGGCCTGTCCCGAAGACGGTACATCTATAACTTCCCGTTCAAGGCTTTTCATTTT
TACTTGGTGAGAGCCCTGCAGCTGCTGAGACGACCTTGGCAGAAAAGTTACAAAAGTGTGGTGTACAGCA
CAAGCCCAGACATTTTCATTACATTCGGAGAGCAAAACCAAGCCAGGCTGGGTAACCTTACAGTTGGCGTA
TTCAGCCAAACCGGAGACAGCCGACAACCAACGGGTGCTAACCATCCAGACCTGCTTTGGAGTCGCCGTG
GGAAAGTTTCTTAATAAAGAAGACGACAGCGTTGTTTTAATACCTCTGAGTGAGGTTTTTCAAGTGTGCA
GGAAAGGAAGTACGACGACCTTGTCTTCAGAGCATAAACAGTACCTGCAGCTACTACGAGTGCCGATT
CCTCGGGGTCTGAAAACAGAAAATTGTATCGCGAACGCAGAATATATTGACCCTAGGTATCTCTACAAC
CCAGATATGGACAATCAGAAGCTTGAAGACTCTGGTAGGAACAACCTTGACCCTGACAGAATGCCAGAAA
TTAAAGTGCTACAAACAGAGGAAAATCCTCTCCTGCCGGATGAAAAGCCTGCTCCAGGTCTGGTTCCAGG
TCCGAAATCCCATCCCTCTGCATCCTCTGGCAATACGCTCCTCCATCAGTCATGGCATCCACCATTTTA
CTCGTTGCTTCTGCTGTAACCTTCATCGAGCTA

AG**CGGACCG**ACGCGTACGCGGCCGCTCGAG - GFP Tag - GTTTAA



[View online »](#)

Protein Sequence: >MG223250 representing NM_181728
 Red=Cloning site Green=Tags(s)

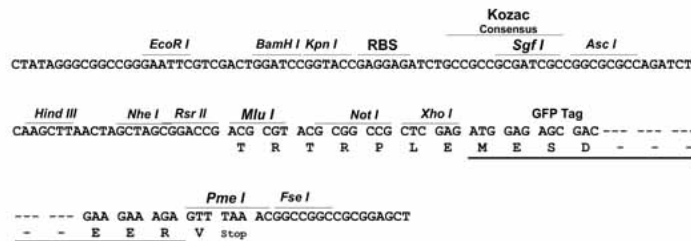
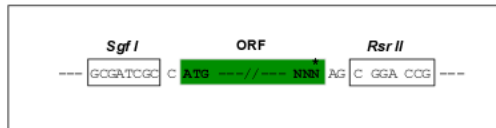
MKMGHFEMVTTLLAAAVLMDIFQVKAEVLDMAENAFDDEYLKCKSRMESKYIPQMKREEWANDALLRMVW
 DNAEIQWEARKAQLFLPRNFKDTYGIALTAYVNEAQEQTSFYHTFSSAVKMAGLSRRRYIYNFPKAFHF
 YLVRALQLLRPCEKSYKTVVYSTSPDISFTFGEQNQARLGNFTLAYSAPKPETADNQRVLTIQTCFGVAV
 GKFLNKEDDSVLIPLSEVFQVSRKGTSNLVLQSQINSTCSYYECAFLGGLKTENCIAANAEYIDPRYLIN
 PDMDNQKLEDSGRNNLDPDRMPEIKVLQTEENPLLPDEKPAPGLVPGPKSHPSASSGNTLLPSVMASTIL
 LVASAVNFIEL

SGP^{TRRRLE} - GFP Tag - V

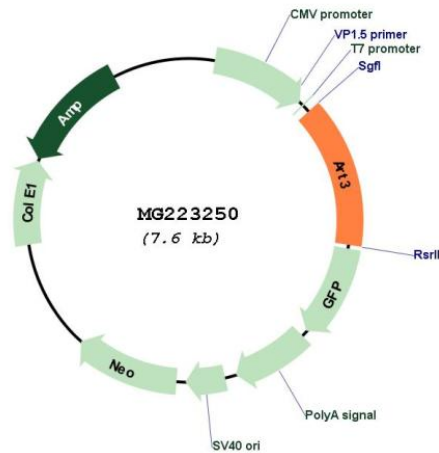
Restriction Sites: SgfI-RsrII

Cloning Scheme:

Cloning sites used for ORF Shuttling:



Plasmid Map:



ACCN: NM_181728

ORF Size:	1083 bp
OTI Disclaimer:	The molecular sequence of this clone aligns with the gene accession number as a point of reference only. However, individual transcript sequences of the same gene can differ through naturally occurring variations (e.g. polymorphisms), each with its own valid existence. This clone is substantially in agreement with the reference, but a complete review of all prevailing variants is recommended prior to use. More info
OTI Annotation:	This clone was engineered to express the complete ORF with an expression tag. Expression varies depending on the nature of the gene.
Components:	The ORF clone is ion-exchange column purified and shipped in a 2D barcoded Matrix tube containing 10ug of transfection-ready, dried plasmid DNA (reconstitute with 100 ul of water).
Reconstitution Method:	<ol style="list-style-type: none">1. Centrifuge at 5,000xg for 5min.2. Carefully open the tube and add 100ul of sterile water to dissolve the DNA.3. Close the tube and incubate for 10 minutes at room temperature.4. Briefly vortex the tube and then do a quick spin (less than 5000xg) to concentrate the liquid at the bottom.5. Store the suspended plasmid at -20°C. The DNA is stable for at least one year from date of shipping when stored at -20°C.
RefSeq:	NM_181728.3 , NP_859417.2
RefSeq Size:	1578 bp
RefSeq ORF:	1086 bp
Locus ID:	109979
UniProt ID:	Q8R2G4
Cytogenetics:	5 46.54 cM