

## Product datasheet for **MG221649**

### Setd2 (NM\_001081340) Mouse Tagged ORF Clone

#### Product data:

Product Type:	Expression Plasmids
Product Name:	Setd2 (NM_001081340) Mouse Tagged ORF Clone
Tag:	TurboGFP
Symbol:	Setd2
Synonyms:	4921524K10Rik; BC031601; KMT3A
Mammalian Cell Selection:	Neomycin
Vector:	pCMV6-AC-GFP (PS100010)
E. coli Selection:	Ampicillin (100 ug/mL)
ORF Nucleotide Sequence:	>MG221649 representing NM_001081340, <b>codon optimized</b> . <b>Due to the complexity of NM_001081340, the ORF clone is codon optimized for mammalian Expression.</b> <b>The nucleotide sequence differs from the reference sequence, yet the amino acid sequence remains identical.</b>

Red=Cloning site Blue=ORF Green=Tags(s)

TTTTGTAATACGACTCACTATAGGGCGGCCGGAATTCGTCGACTGGATCCGGTACCGAGGAGATCTGCC  
GCC**CGGATCGCC**

ATGAAACCCCTCCCTCCAGCAGCCTCCTCCAAGATGGGGATTTCTACGACCCTGAGCATCCCACCC  
CTGAGGAGGAGGAGAACGAAGCTAAAATTGAGAACGTACAAAAGACCGGCTTCATAAAAGGGCTGTATT  
TAAGGGCGTGGCTTCCAGTCGATTCCTGCCTAAGGGGACGAAGACAAAGGTCAACCTGGAGGAGCAGGGT  
CGACAAAAGTGTCTTTTCTTCTCATTACGAAGAAGACCCTGCAAAATCGATTCTGACGGCCCTGT  
CCAACGAGAAGCAGTCCGACTCTCCGAACAGTCCCGCACCTCCCTGCAGGTAGACTCCAACCCAAAAGT  
CAAGATGGACGCCGGAGATACTTCCCTGCGACAGAGGAGTCTCCACCTAAATCCCAGTAGAACTG  
GGGAGAATCCATTTTAAGAAGCATCTGCTCCATGTAACCAAGTCGACCACAGTTGGCCGCCTCCACTACAG  
CAGCCAGCCCCCTGCCCAACACACAGCTCCCTGCCGTGCTCGCTGAGAGCATGATTGATTTCCACCC  
ATCCAGTCCACCTCCCCCTCCACCCCTCCACAGGCCAGTTCACCTAGCCCCCGCTCAGATTTCTGAA  
CCCGTGGCCCTTCCGACGCTCCTGCCACCGCTCTGATGACATCCCTCCTGGACCACTGCCCGGTGATG  
TCGCTGTGCGAGCCAAAAGGAGAGTCCAGTTAAGAGCGGCCCGAAGTCTCGAAGTCGACACTAAACA  
AGATATTGTGAGTAATTCTTTGAGGAACATACGGTGCAGACCCTTAAGGAACAAGCCGATCATCTGCTC  
CAGAAAGAGGACTCACACATCGGAAAAGAAGAGGAGGTGAGCGACGGCTCCAAGATCTCCCTGAGCTCAA  
AAAAGCTTCAAGCAAGAAGAAAAGCTCCCAATTTGAAGGGACATTCCTCGGTTCTGAGAGCGACGAGGA  
CAGCGTTAGAATTCTTCTCCAGCGAAGTCATGACCTCAAGTCCAGTACCAGCATCGACAAGGAAAGA  
GATTTCAAGAAGAGCAGTGCCCCCTCAAATCTGAAGACCTCGGAAAGTCATCCAGGTCTAAGACCGAGC



View online »

GCGATGACCGATATTGCTCATATAGTAAGCTGGAACGCGATACTCGCTACGTTTCTCCAGGTGTAGATC  
 CGAGCGGGACCGAAGAAGATCCCCTCTCGCTCACGGTCCGACCGGGCAAGCCGAACCAGTCTGTATAT  
 AGTCGCTCCGAGAGATCCCATTATTAGTACTCCGAAAGGCGCTACCACCGCAGTTCCTTACAGAGAAA  
 GAACTAGATATTTCAAGGCCTTATACGGACAATCGGGCCCGCAATCTTCAGATCCGAGGATGAATACAA  
 GAAAACATACCCACGGAGAACATCAGCCACAGCTACAGAGACTTGAGGACTTCTCAAGCTACTCCAAG  
 TTCGACAGAGATTGCAAGACAGAAACATCTACCTTGAGATGGAGCGGCGAGGCAAGTACTAGTAAAC  
 TTGAGAGAGAGTCCAACGAACAAGCGAACACGAGACGATCAAGCGATGCTGCTACCCCCAACGAGCT  
 GGGCTTTTCGGCGAGGCAGCTCCTATAGTAAACATGACAATTCACCAGCAGATACAAGTCCGCCCTGTCA  
 AAGAGCATATCTAAAAACGATAAATTCAAAAACTCCTTCTGCTGTACCGAACTGAACGAGAAAAACAAAC  
 AGTCACACAGCTTCAGTCTTCAAACCCCTGCTCCAAGGGCAGCGAGCTGAGGACCATTAACAAGATCAG  
 TGAGAGAGAGAAAAACAGGATCCCGACCCCAAGTAACCAGCTTAACGATTCCTCCACTTTTAAGAACTG  
 GATGAGTCTCCTGTGCTGAAACCAGAGTTTATCGGCCATGACGGGCGGAGAGCATTAAAGAACTGAAC  
 TGTCTAAGGTAACAAACGACCAGCTCCGCAATTTTGCAGCATCGAGCTGAACGTAACGGATCTCCAGA  
 AACTGAAGCCGATGTGGTACATTTGCACAAGCAAGACAGATGCCATTAGTATGACATCCGACGACAGT  
 GTGACCGGCTCAGAGGTGTCCTTTCGATCAAAGCATGCATGCTGAGCAGCAATGGGTTTCAGAAGTCCG  
 GTCGGTGTCCGGAGCGGATTCAGACGATACGTGCCGCCAGCATAATACCAGCAAGTCTCCTTTCAGAGA  
 AATGGAGCCACTGCTGAGCCCTACCACGATAAGCTGATGAGCTTGCCAGTCAAGACAATTGACTACCTT  
 AAGACATTGATTAAGGAACCGGTGGACAAGAGACTCTTGTGCAAACTAAGGATAGCGATATCTACT  
 GTTCCCTAATGAAAAATCCAGAGGCAGAAAAACCGCGAGCCTTCTGCTATGACTATCAGCTCTCATTCTTT  
 CGTCAACGTGCATTTGAAAAGTAAAACCGTAATATGCGACAACCGAGAGCCACCAGTACGACATAGCGAA  
 AATACTTGTGATGAGTACAAACAGAGTATCGGCAGCACCTCCTCCGCGAGCCATAATCATTTTCGACGGCC  
 TGTACGAGCCCATCGGATCTAGTGGGATCAGCTCCCTGCAGAGCCACCCTCTGGGATCCGCTGCGGAA  
 GAACACCACTCAACTTTGGACGCTGTGAGAGTAAAGAAAGGCATCGATTTCTGAAGTACGCTCGCAAA  
 GAAACCGACGTGGGAAGTGCCTTCCAGATAGTGGCAAGGGTTTTCTTGGGAAAAATAGGCATAACAATG  
 TGCTGAGTGGCCAGTCTTGCAGGAGGCACAGGAGGAAGGAAATTCATTTCTGAGCGGCGCGGAAG  
 GCCCGAGATTCCTTTCGACGAGGAGCAGCGCGCCATACACACATCAGTGACGATTCTGAGGTGGTGT  
 CCGTACGACCTCAACCTTACCATGGAGGACTCTGACGGCATTACGTACACGCTGAAGTGTGACTCCTCAG  
 GTAACGCACCTGAAATTTGTCAGTACTGTACACGAAGACTACAGTGGTCTCTGCCTCCTCCTCCGACGA  
 GAGCGACTCCGAGGACTGAAAGTACGATAGCAGTATTCGAAGAAACCGACTCCAGTCTGTTGTGGTT  
 GTGCCAAAGAATTCTACTTTGCCATGGAAGAGACAAGTCCCTGTTCTTCTCGGAGCAGTACAGGCTACA  
 AACATTATTTGACCGCTGGGAAGATGGATTAGAGACCAGGAGACATGCATATGAGGAAGAGTATGAGAG  
 TAAAGGCTGTTCTCAAACGAAAAATACTTCTTCATAAAGGAACAGAGAGAAGTGCAGAAAAGTTGTAT  
 TCACAGTTTGGCAGGAAAGCAGATAATCACCTGCCTGACATTGCTCATGCTCAGAGTGACGGGGTTGATA  
 GTACAAGTACAGACAGACTCGAGATCTGACCATCTAGGTCACTGAATCCAGAGGACACATTAAGAGCCAA  
 AACATCTAGGCCACAAGAGCTACCAGTTTATTCTGACGATTTTGAAGATCTCCCAATAAGTCTCGGCAG  
 CAGATGATTTTCTCTAATCGGCCAGATAGTAGTACTAGGAAAAACAGAGCTGAGTTTTTCTTCTCTT  
 GTGACATTTCCCGAATGGATGGCTTGCACATCAGAAGAGCTCAGAAACCTAGGGTGGGACTTTTCCCA  
 ACAGGAAAGGCCACCACCACATACCAGCAGCCTGACAGCAGCTATGGAACCTGTGGTACACATAAGTAT  
 CAACAAAGTACTGAACACTATGGTGGGACCCATAATTACTGGCAAGGCAATGGCTATTGGGATCCAAGAT  
 CAGCAGGTAGACCTCCAGGAACGGCTTGTCTATGATCGAATCCAAGGGCAAGTACCAGATTCTCTAAC  
 AGACGATCGTGAAGAAGGGAACATTGGGATCAACGAAGTGGATCACATTTTTCAAGCCCGTCCAATAAA  
 TTTTTCTTCCATCAGAAGGACAAGGATCAGTGAAGCACCAGGAAATAAGCAGCAATTCAATTAAGACG  
 CTTTAGTTATGAACGAAAGGAAAGATTTTTCGAAAACTTTGAAAAAATGATATAAAAGAGAGAGGGCC  
 TCCTAAAAACGAAGGCAAGAGTTGGAGAGTATTCTGAAAGTATGGTGAACACTACAGGCTAGAAAGAAA  
 GTTAGAGTGGAGATGGAGCAGGGAGAATCATCTGTGCCCCAGCACTCAGAACTGATGGGGCCTTCGTGTG  
 CTATGGATGACTTCAGGGACCCACAGCGGTGGAAGAATTTGCCAAGCTGGGAAGATGCCATGTTACTT  
 TGATCTTATTGAAGAAAATGTTTATTTAACAGAAAGGAAGAACAATCCCACCGGGATTAAGCGA  
 ATGCAAGTGTGAGTGTACACCTCTTTCTAAGGATGAAAGAGCTCAAGGTGAAGTAGCATGTGGAGAAGATT  
 GCCTTAATCGTCTCCTCATGATTGAATGTTCTCTCGATGTCCTCAATGGAGATTACTGTTCAAACAGACG  
 GTTTCAGAGAAAAACAGCATGCAGATGTAGAAGTCACTTACAGAAAAAGAAAGGCTGGGGCTTAAGGGCT  
 GCTAAGGATCTTCTTCGAACACCTTTGCTCTGGAATACTGTGGAGAGGTAAGTATCAAAAGAGTTTA  
 AAGCTCGGGTGAAGAATATGCACGGAACAAAACATCCACTACTTTCATGGCCCTGAAAAATGACGA

GATAATAGATGCCACTCAAAAAGGGAATTGCTCTCGTTTCATGAATCATAGCTGTGAACCAAAGTGTGAA  
ACCCAGAAATGGACTGTGAATGGACAGCTGAGGGTTGGATTTTTACCACCAAAGTATGTTCCCTTCAGGCT  
CAGAATTAACTTTTGACTACCAGTTCCAAAGATATGGCAAAGAAGCTCAGAAGTGTTCGTGGGTCAGC  
CAACTGCCGGGGCTACTTGGGAGGAGAAAAAGAGTCAAGTATCAGAGCTGCAGGAGGGAAGATGAAAAAG  
GAACGCTCTCGAAAGAAGGATTCAGTGGATGGAGAAGTGAAGCACTGATGGAAGTGGTGAAGGCTCT  
CTGATAAGAACCAGGTTCTTAGTTATCCCGGCTCATGGTTAGAATTGAACTTTGGAACAGAACTTAC  
CTGTCTTAAGCTCATTGAGAACACACACTCACAGTCTGCCTCAAGTCATTTCTGGAACGTCATGGGTTG  
TCACTGTTGTGGATCTGGATGGCAGAGCTTGGCGACGGCCGGGAAAGTAACCAGAAGCTTCAGGAAGAGA  
TTATAAAGACTTTGGAGCATTGGCCATTCTACTAAAAATATGTTGGAAGAAAGCAAAGTACTTCCAAT  
TATTCAGCGCTGGTCTCAAAGTAAAGTCTGTTCTCAGTAAAGTGAAGGAGACGGGATTCTAGTGAG  
AATACATCACGTGCTCACACACCCTTAATACACCGGACCCTTCTGCCAAGCCGAGCAGGAAATGGATA  
CAGATACTCCCAAGAACTCATATTCGCAGACTGAAGATTATAAGTAAAAAGCATGGACAGTGCAGT  
CTCGGACGTCAGTGTAGCTAGAATGCAAGGATGGCAAAGAGGACCTTGATCAGTTAGAGACTGCACT  
GTGGAAGAGGATGAAGAGCTGCAGTCCCAGCAGCTCTCCACAGCAGCTGTGCGAGTCCAAAGTTGAGA  
GTGAAGCCACTATTGAAGTCAGTAAAGTACCCACATCTGAACCGAGGCAGACACGGAGACAGAGCCAA  
AGACAGCAATGGCACAAAAGTAAAGAAACTATTGCTGAGGAAACACCATCCCAAGATGAAGAAGAGGGA  
GTGCTGTGATGTTGAAAGTGAAGAGGAGCCAGGAGCCACCAGATAAAAACAGTGGATATAAGTATTTGGCTA  
CCAAGTACTAGACAGTTGGAAGATCTAAAGGAGGTGTATCGGATTCAAAAGAAAAGTCAAAGTAAAA  
GGAGAGCACAGTAGTGAACGAGGAAGAGATGTGCTGCCTTCAGAGATCAAACAGCTCCAAAGACTCCT  
AACAGGTCTAGAGAGAGAGACCCAGACAAGCAGTCTCAAATAAAGAGAAAAGGAAACGACGGGGCTCTC  
TGTCACCACCCTCTTCTGCATATGAGCGGGGAACAAAAGGCCAGATGACAGATATGATACACCAACTTC  
TAAAAAGAAAAGTACGAATTAAGACCGAAACAACTTTCTACAGAGGAGCGCAGGAAGTTGTTTGAACAA  
GAGGTGGCACAGAGGGAAGCTCAGAAGCAACAGCAACAGATGCAGAACTTGGGGATGACATCACCCTCC  
CCTTTGACTCTCTGGGATATAATGCCTCTCATCACCCCTTTGCTGGGTACCCACCAGGTTACCCCATGCA  
AGCCTATGTGGATCCCAGCAACCCTAATGCTGGAAGGTGCTTCTGCCACACCTAGCATGGACCCTGTG  
TGCTCCCTGCTCCTTATGATCACGCTCAGCCCTTGGTAGGACATTCTACAGAATCCCTTCTGCTCCCC  
CATCTGTGCCAGTGGTCCGCATGTGGCAGCCTCTGTGGAAGTTTCCAGTTCTCAGTATGTAGCTCAGAA  
TGAAAGTGTGTACACCAAGACTCCAATGTTCTGTAATGCCAGTACAAGCTCCAGGCCAGTCCAAGGA  
CAGAATTACAATGTCTGGGAGTCAAACCAACAGTCTGTCAAGTGTACAACAGCAGTATTCTCTGCACAAT  
CTCAAACAACCATATATTATCAAGGACAGACATGTTCAACTGTCTATAGTGTGACCTCGCCTTATTCACA  
GACAACCTCCTCAATTGTGCAGAGTTATGCCAGCCAAGTCTTCAAGTATATCCAGGGACAGCAGATTTTC  
ACAGCTCACCCACAAGGAGTGGTGGTACAGCCAAGTGCAGCCGTGACTTCAATAGTTGCACCAGGGCAGC  
CTCAGTCTTACAGCCACCTGAAATGGTTGTAACAAAATAATCTACTGGACCTGCCACCACCTCCCTCC  
AAAACCAAAAACGATTGTTTTACCTCCCAACTGGAAGACAGCCCGAGACCCTGAGGGGAAGATCTACTAC  
TACCACGTGATCACAAGACAGACTCAGTGGGATCCTCCTACTTGGGAAAGCCCAGGAGATGATGCCAGCC  
TTGAGCATGAAGCTGAAATGGACCTGGGAACCCCAACCTATGATGAAAACCCATGAAGACATCAAAAA  
GCCCAAGACAGCAGAAGCAGACACCTCCAGTGAAGTGGCAAAGAAAAGCAAAGAAGTATTCAGAAAAGAG  
ATGTCTCAGTTTATTGTCCAGTGCCTGAATCCTTACCGGAAACCTGACTGCAAGGTGGCAGGATCACC  
CCTGAAAGATTTCAAGCACCTCGCCGAAAGCTGACTCATGGAGTTATGAATAAGGAGCTGAAGTACTG  
TAAGAACCCCGAGGACCTGGAGTGAATGAGAATGTGAAACACAAAACCAAGGAGTACATCAAGAAGTAC  
ATGCAGAAGTTTGGGGCTGTTTACAAACCTAAAGAGGACACTGAACTAGAG

ACGCGTACGCGGCCGCTCGAG - GFP Tag - GTTTAA

**Protein Sequence:** >MG221649 representing NM\_001081340  
 Red=Cloning site Green=Tags(s)

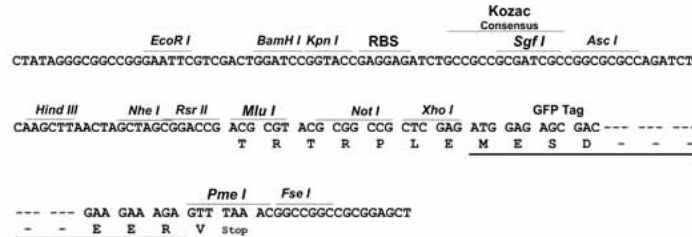
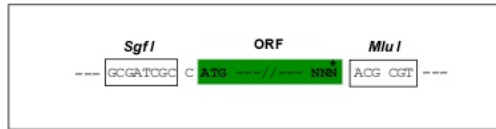
MKPLPSQQPPPKMGDFYDPEHPTPEEEENEAKIENVQKTGFIKGPVFKGVASSRFLPKGKTKVNLEEQQ  
 RQKVSFSFSTKTKLQNRFLTALSNEKQSDSPNSPAPPLQVDSNPVKVMDAGDTFPATEESSPPKSRVEL  
 GRIHFKKHLLHVTSRPQLAASSTAASPLPPTTQLPAVLAESMIDSPSSPPPPPPPPQASSPSPAQISE  
 PVALPQPATALMTSPPGPLPGDVAVRAQKESPVKSGPEVLEVDTKQDIVSNSLEEHTVQTLKEQADHLL  
 QKEDSHIGKEEVSQDGSKISLSKSKASSKKSSQFEGTFLGSEDEDSVRTSSSQSRSHDLKSSSTSIDKER  
 DFKKSSAPSKSEDLGKSSRSKTERDDRYCSYKLERDTRYVSSRCRSEDRRRRSRSDRASRTSLSY  
 SRSERSHYDSEYRHRSSPYRERTRYSRPYTDNRARESSDSEDEYKTYPRRTSAHSYRDLRTSSSYSK  
 FDRDCKTETSYLEMERRGKYTSKLERESKRTSEHETIKRCCSPPNELGFRGSSYSKHNDNSTRYKSALS  
 KSISKNDKFKNSFCCTELNEENKQSHSFLQTPCSKSGSELRTINKISEREKTGSPTPSNQLNDSPTFKKL  
 DESPVLKPEFIGHDGRESIKELELSKVKNQDLRNFCSIELNVNGSPETEADVATFCTSKTDAISMTSDDS  
 VTGSEVSPLIKACMLSSNGFQNVGRCRERDSDDTCRQHNTSKSPFREMEPLLSPHHDKLMSLPVKTIDYP  
 KTLIKEPVDKRHSCCKTKDSDIYCSNENPEAENAEPSSAMTISHSFVNVHLESKTVICDNREPTDRHSE  
 NTCDEYKQSIGSTSSASHNHFDGLYEPIGSSGISSLQSPPSGIRCEENTSPTLDAVESKKGIDFLYARK  
 ETDVGSALPDSGKGSWENRHNNVLSGQSLQEAQEEGNSILHERRGRPEIPLDEEQRGHTHISDDSEVVF  
 PYDLNLTMEDSDGITYTLKCDSSNAPEIVSTVHEDYSGSSASSDSESDTESDDSSIPRNLQSVVV  
 VPKNSTLPMEEETSPCSSRSSQSYKHSYDRWEDGLETRRHAYEEEEYKSGCSQTEKYFLHKGTERSAESCY  
 SQFGRKADNHLPIAHAQSDGVDSTSQTDERSDHLGHLNPEDTLRAKTSRPQELPVYSDDFDLNPKSRQ  
 QMIFSNRPDSSRLGKTELSFSSSCDISRMDGLHSSEELRNLGWDFSQQERPTTTYQQPDSSYGTGTHKY  
 QQSTEHYGGTHNYWQNGYWDPRSAGRPPGTGLAYDRIQQQVPSLTDREEEHWDQSRGSHFSSPSNK  
 FFFHQKDKGSVQAPEISSNSIKDALVMNERKDFSKNFKNDIKERGPPKRRQLESDSESDGELQARKK  
 VRVEMEQQESSVPOHSELMGPSCAMDDFRDPQRWKEFAKLGKMPCYFDLIEENVYLTERKKNKSHRDIKR  
 MQCECTPLSKDERAQGEVACGEDCLNRLMIECSSRCPNGDYCSNRRFQRKHADVEVILTEKKGWGLRA  
 AKDLPNSFTVLEYCGEVLDHKEFKARVKEYARNKNIHYFMALKNDEIIDATQKGNCSRFMNHSCEPNCE  
 TQKWTVNGQLRVGFFTTKLVPSGSELTFDYQFQRYGKEAQKFCGSANCRGYLGGENRVSIRAAGGKMKK  
 ERSRKKDSVDGELEALMENGELSDKNQVLSLRLMVIETLEQKLTCLKLIQNTHSQSCLKSFLERHGL  
 SLLWIWMAELGDRESNQLQEEIIKTLEHLPIPTKNMLEESKVLPIIQRWSQTKTAVPQLSEG DGYSSE  
 NTSRAHTPLNTPDPSAKPSTEMDTPKLIIFRRLKIISENSMDSAVSDVTSELECKDGKEDLDQLETVT  
 VEDEELQSQQLLPQQLCESKVESEATIEVSKLPTSEPEADTETEPKDSNGTKLEETIAEETPSQDEEEG  
 VSDVESERSQEPDPKTVDISDLATKLLDSWKDLKEVYRIPKKSQTEKESTVAERGRDAAAFRDQTA PKTP  
 NRSRERDPDKQSQNKKEKRKRRGSLSPSSAYERGTRKRPDDRYDTPTSKKKVRIKDRNKLSTEERRKLFQ  
 EVAQREAAQKQQQMQLGMTSPLPFDSLGNASHHPFAGYPPGYPMQAYVDPNSPNAGVLLPTPSMDPV  
 CSPAPYDHAQPLVGHSTESLAAPPSPVVPVHVAASVEVSSQYVAQNESVVHQDSNVPVMPVQAPGPVQG  
 QNYNVWESNQSVSVQQYSPAQSQTIIYYQGQTCSTVYSVTSPYSQTPPIVQSYAQPQLYIQGQIF  
 TAHPPQGVVQPTAAVTSIVAGQPQSLQPPEMVTNNLLDLPPPSPKPKTIVLPPNWKATARDPEGKIYY  
 YHVITRQTQWDPPTWESPGDDASLEHEAEMDLGTPTYDENPMKTSKKPKTAEADTSSELAKKSKEVFRKE  
 MSQFIVQCLNPYRKPDCVGRITTTEDFKHLARKLTHGVMNKELKYCKNPEDLECNENVKHKTKKEYIKKY  
 MQKF GAVYKPKEDTELE

TRTRPLE - GFP Tag - V

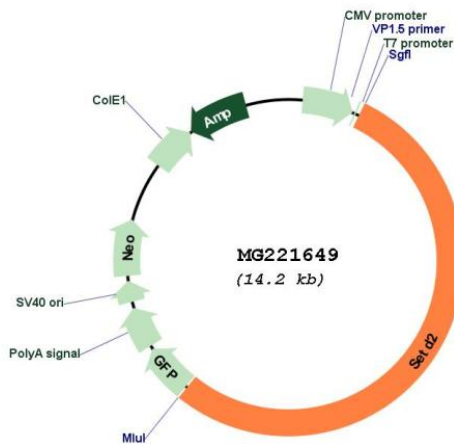
**Restriction Sites:** Sgfl-MluI

Cloning Scheme:

Cloning sites used for ORF Shutting:



Plasmid Map:



ACCN: NM\_001081340

ORF Size: 7611 bp

OTI Disclaimer: The molecular sequence of this clone aligns with the gene accession number as a point of reference only. However, individual transcript sequences of the same gene can differ through naturally occurring variations (e.g. polymorphisms), each with its own valid existence. This clone is substantially in agreement with the reference, but a complete review of all prevailing variants is recommended prior to use. [More info](#)

OTI Annotation: This clone was engineered to express the complete ORF with an expression tag. Expression varies depending on the nature of the gene.

<b>Components:</b>	The ORF clone is ion-exchange column purified and shipped in a 2D barcoded Matrix tube containing 10ug of transfection-ready, dried plasmid DNA (reconstitute with 100 ul of water).
<b>Reconstitution Method:</b>	<ol style="list-style-type: none"><li>1. Centrifuge at 5,000xg for 5min.</li><li>2. Carefully open the tube and add 100ul of sterile water to dissolve the DNA.</li><li>3. Close the tube and incubate for 10 minutes at room temperature.</li><li>4. Briefly vortex the tube and then do a quick spin (less than 5000xg) to concentrate the liquid at the bottom.</li><li>5. Store the suspended plasmid at -20°C. The DNA is stable for at least one year from date of shipping when stored at -20°C.</li></ol>
<b>RefSeq:</b>	<u><a href="#">NM_001081340.2</a></u> , <u><a href="#">NP_001074809.2</a></u>
<b>RefSeq Size:</b>	8350 bp
<b>RefSeq ORF:</b>	7614 bp
<b>Locus ID:</b>	235626
<b>UniProt ID:</b>	<u><a href="#">E9Q5F9</a></u>
<b>Cytogenetics:</b>	9 F2

**Gene Summary:**

Histone methyltransferase that specifically trimethylates 'Lys-36' of histone H3 (H3K36me3) using dimethylated 'Lys-36' (H3K36me2) as substrate (PubMed:18157086, PubMed:20133625). Represents the main enzyme generating H3K36me3, a specific tag for epigenetic transcriptional activation (PubMed:18157086, PubMed:20133625). Plays a role in chromatin structure modulation during elongation by coordinating recruitment of the FACT complex and by interacting with hyperphosphorylated POLR2A (By similarity). Acts as a key regulator of DNA mismatch repair in G1 and early S phase by generating H3K36me3, a mark required to recruit MSH6 subunit of the MutS alpha complex: early recruitment of the MutS alpha complex to chromatin to be replicated allows a quick identification of mismatch DNA to initiate the mismatch repair reaction (By similarity). Required for DNA double-strand break repair in response to DNA damage: acts by mediating formation of H3K36me3, promoting recruitment of RAD51 and DNA repair via homologous recombination (HR) (By similarity). Acts as a tumor suppressor (By similarity). H3K36me3 also plays an essential role in the maintenance of a heterochromatic state, by recruiting DNA methyltransferase DNMT3A (By similarity). H3K36me3 is also enhanced in intron-containing genes, suggesting that SETD2 recruitment is enhanced by splicing and that splicing is coupled to recruitment of elongating RNA polymerase (By similarity). Required during angiogenesis (PubMed:20133625). Required for endoderm development by promoting embryonic stem cell differentiation toward endoderm: acts by mediating formation of H3K36me3 in distal promoter regions of FGFR3, leading to regulate transcription initiation of FGFR3 (PubMed:25242323). In addition to histones, also mediates methylation of other proteins, such as tubulins and STAT1 (PubMed:27518565). Trimethylates 'Lys-40' of alpha-tubulins such as TUBA1B (alpha-TubK40me3); alpha-TubK40me3 is required for normal mitosis and cytokinesis and may be a specific tag in cytoskeletal remodeling (PubMed:27518565). Involved in interferon-alpha-induced antiviral defense by mediating both monomethylation of STAT1 at 'Lys-525' and catalyzing H3K36me3 on promoters of some interferon-stimulated genes (ISGs) to activate gene transcription (By similarity).[UniProtKB/Swiss-Prot Function]