

## Product datasheet for **MG220309**

### Stk38l (NM\_172734) Mouse Tagged ORF Clone

#### Product data:

Product Type:	Expression Plasmids
Product Name:	Stk38l (NM_172734) Mouse Tagged ORF Clone
Tag:	TurboGFP
Symbol:	Stk38l
Synonyms:	4930473A22Rik; Ndr2; Ndr54
Mammalian Cell Selection:	Neomycin
Vector:	pCMV6-AC-GFP (PS100010)
E. coli Selection:	Ampicillin (100 ug/mL)



[View online »](#)

**ORF Nucleotide Sequence:**

>MG220309 representing NM\_172734  
 Red=Cloning site Blue=ORF Green=Tags(s)

TTTTGTAATACGACTCACTATAGGGCGGCCGGAATTCGTCGACTGGATCCGGTACCGAGGAGATCTGCC  
 GCC**CGGATCGCC**

ATGGCAATGACGGCAGGGGCAACAACACTACCTTTCTATGACCAACCATACCCGGAAAGAGTAAGTGTGG  
 CCAAGCTCACACTGGAGAATTTTACAGCAACCTAATTTTACAGCATGAAGAGAGAGAAAACCAGGCAGAA  
 GAAGTTAGAAGTGGCTATGGAAGAAGAAGGATTGGCAGATGAGGAGAAAAAGTTACGTCGATCGCAGCAT  
 GCTCGTAAAGAAACAGAGTTCTTACGCCTTAAGAGGACCAGACTTGGCCTAGATGACTTTGAGTCTCTGA  
 AGGTTATAGGAAGAGGAGCTTTTCGGAGAGGTGCGGCTGGTCCAGAAGAAAGACACGGGCACATCTATGC  
 CATGAAGATCCTGAGGAAAGCTGACATGCTTGAGAAAGAGCAGGTGGCTCATATCCGAGCAGAAAGGGAC  
 ATTTTGGTGAAGCAGATGGAGCCTGGGTGGTGAAGATGTTCTACAGTTTTTCAGGACAAACGGAATCTCT  
 ATCTCATCATGGAATTTCTTCTGGAGGTGACATGATGACATTGCTGATGAAGAAGGACACCTTAACAGA  
 AGAAGAGACACAGTTCTACATCTCAGAGACTGTCTTGGCGATAGATGCAATTCACCAGCTGGGCTTCATC  
 CACCGGGACGTCAAACCCAGACAACCTTTTACTGGATGCCAAGGGACATGTAAAATTATCTGATTTTGGTT  
 TGTGCACGGGTTAAAGAAAGCTCACAGGACTGAATTCTACAGAAACCTCACACATAACCCGCCAAGCGA  
 CTTCTCATTTTCAAGACATGAATTCAAAGCGGAAAGCAGAGACATGGAAGAAGAACAGGAGACAGCTGGCT  
 TACTCCACAGTTGGAACACCAGACTACATTGCTCCAGAAGTATTCATGCAGACTGGCTACAACAAATTTGT  
 GTGACTGGTGGTCTTGGGAGTGATTATGTACGAGATGCTAATAGGCTTTCCACCTTTCTGCTCTGAAAC  
 ACCACAAGAAACATACAGAAAAGTTATGAGCTGGAAGGAGACTCTGGCATTTCCTCCGGAAGTCCCGTC  
 TCTGAGAAAAGCCAAGGACTTGATTCTCAGATTTGTACTGATTCTGAAAACAGAATTGGGAATGGTGGTG  
 TGAAGAAAATCAAAGGTATCCGTTCTTTGAGGGTGTAGACTGGGGGCACATAAGGGAAAGACCAGCAGC  
 TATTCCTATAGAAATCCGGAGTATAGATGACACCTCAAACCTTTGATGACTCCCTGAGTCTGATATCTTA  
 CAGCCAGTGCCGAATACCACAGAGCCCGACTACAATCCAAGACTGGGTTTTTCTCAATTACACCTACA  
 AAAGGTTTGAAGGGCTGACCCAGAGAGGCTCCATTCTACATACATGAAAGCTGGGAAGTTA

**ACGCGTACGCGGCCGCTCGAG** - GFP Tag - GTTTAA

**Protein Sequence:**

>MG220309 representing NM\_172734  
 Red=Cloning site Green=Tags(s)

MAMTAGATTTFPMSNHTRERVTVAKLTLENFYSNLILQHEERETRQKKLEVAMEEEGLADEEKKLRRSQH  
 ARKETEFRLRKRTRLGLDDFESLKVIGRGAFGEVRLVQKKDTGHIYAMKILRKADMLEKEQVAHIRAERD  
 ILVEADGAWVVKMFYSFQDKRNLYLIMEFLPGDMMTLLMKKDTLTEEETQFYISETVLAIDAIHQLGFI  
 HRDVKPDNLLLDAGHVKLSDFGLCTGLKKAHRTEFYRNLTHNPPSDFSFQNMNSKRKAETWKKNRRQLA  
 YSTVGTDPDYIAPEVFMQTGYNKLCDWWSLGVIMYEMLIGFPPFCSETPQETYRKVMSWKETLAFPPPEVPV  
 SEKAKDLILRFCTDSENRI GNNGVEEIKGHPPFEGVDWGHIRERPAAIPIEIRSIDDTSNFDDFPESDIL  
 QVPNTTEPDYKSKDWFLNYTYKRFEGLTQRGSIPTYMKAGKL

**TRTRPLE** - GFP Tag - V

**Restriction Sites:**

Sgfl-MluI

**Cloning Scheme:**


**ACCN:** NM\_172734

**ORF Size:** 1392 bp

**OTI Disclaimer:** The molecular sequence of this clone aligns with the gene accession number as a point of reference only. However, individual transcript sequences of the same gene can differ through naturally occurring variations (e.g. polymorphisms), each with its own valid existence. This clone is substantially in agreement with the reference, but a complete review of all prevailing variants is recommended prior to use. [More info](#)

**OTI Annotation:** This clone was engineered to express the complete ORF with an expression tag. Expression varies depending on the nature of the gene.

**Components:** The ORF clone is ion-exchange column purified and shipped in a 2D barcoded Matrix tube containing 10ug of transfection-ready, dried plasmid DNA (reconstitute with 100 ul of water).

**Reconstitution Method:**

1. Centrifuge at 5,000xg for 5min.
2. Carefully open the tube and add 100ul of sterile water to dissolve the DNA.
3. Close the tube and incubate for 10 minutes at room temperature.
4. Briefly vortex the tube and then do a quick spin (less than 5000xg) to concentrate the liquid at the bottom.
5. Store the suspended plasmid at -20°C. The DNA is stable for at least one year from date of shipping when stored at -20°C.

**RefSeq:** [NM\\_172734.3](#), [NP\\_766322.1](#)

**RefSeq Size:** 4617 bp

**RefSeq ORF:** 1395 bp

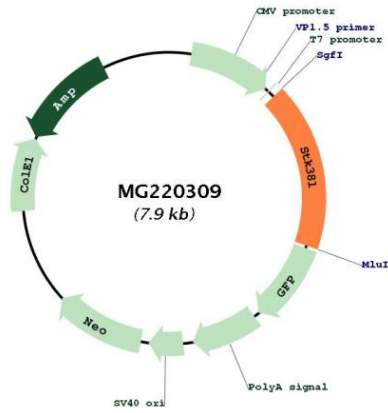
**Locus ID:** 232533

**UniProt ID:** [Q7TSE6](#)

**Cytogenetics:** 6 G3

**Gene Summary:** Involved in the regulation of structural processes in differentiating and mature neuronal cells. [UniProtKB/Swiss-Prot Function]

**Product images:**



Circular map for MG220309