

Product datasheet for **MG219695**

Top2a (NM_011623) Mouse Tagged ORF Clone

Product data:

Product Type: Expression Plasmids
Product Name: Top2a (NM_011623) Mouse Tagged ORF Clone
Tag: TurboGFP
Symbol: Top2a
Synonyms: Top-2
Mammalian Cell Selection: Neomycin
Vector: pCMV6-AC-GFP (PS100010)
E. coli Selection: Ampicillin (100 ug/mL)
ORF Nucleotide Sequence: >MG219695 representing NM_011623
 Red=Cloning site Blue=ORF Green=Tags(s)

TTTTGTAATACGACTCACTATAGGGCGGCCGGAATTCGTCGACTGGATCCGGTACCGAGGAGATCTGCC
 GCC**CGATCGCC**

ATGGAGTTGTCACCGCTGCAGCCTGTAATGAAAATATGCTAATGAACAAAAAGAAGAATGAAGATGGCA
 AGAAAAGATTGTCTATTGAAAGAATCTATCAGAAAAAACACAACCTGGAACATATACTGCTCCGCCCAGA
 TACCTACATTGGCTCTGTGGAGTTAGTGACCCAGCAAATGTGGGTTTACGATGAAGATGTTGGCATTAA
 TACAGGGAAGTCACTTTTGTTCCTGGTTGTATAAAATCTTTGATGAGATTCTAGTTAATGCTGCTGATA
 ACAAAACAAGGGACCCAAAAATGCTTGTATTAGAGTCACAATTGATCCAGAAAAAATGTAATTAGCAT
 CTGGAATAATGGGAAAGGAATCCCTGTTGTTGAACACAAAAGTTGAGAAAAATATGTCCCAGCTCTCATA
 TTTGGACAACCTCCTGACCTCCAGTAACATGACGACGATGAGAAGAAAAGTGACAGGTGGTCGAAATGGCT
 ATGGAGCTAAACTGTGTAACATATTCAGCACCAATTTACTGTGGAAACAGCCAGTAGAGAGTACAAGAA
 AATGTTCAAACAGACGTGGATGGATAACATGGGGAGAGCTGGTGACATGGAACCTCAAGCCCTTTAGTGGA
 GAAGATTATACATGTATCACCTCCAGCCTGACTTATCTAAGTTTAAAATGCAAAGCCTGGACAAAGATA
 TTGTTGCACTGATGGTCAGAAGAGCATATGATATCGCTGGCTCCACTAAAGATGTCAAAGTCTTTCTTAA
 TGGAATAGTCTGCCAGTGAAGGATCCGCAGTTACGTGGATTGTATTTGAAGGATAAGGTAGATGAA
 ACTGGGAATTCAGTGAAGGTGATACATGAACAGGTCATCCCGGTGGGAAGTGTCTTAAACATGAGCG
 AGAGAGGCTTCCAGCAGATTAGCTTCGTC AACAGCATTGCGACTTCTAAGGGCGGCAGACATGTCGATTA
 TGTAGCTGATCAGATTGTGAGCAAACCTCGTTGATGTGGTAAAAAGAAAGAACAAAGGGCGGGTTGCAGTG
 AAGGCTCATCAGGTGAAAAATCACATGTGGATTTTGTAAATGCCTTAATTGAAAACCAACCTTTGACT
 CTCAAACAAAAGAAAACATGACTTTACAAGCCAAGAGCTTTGGATCAACATGTCAATTAAGTAAAAAGTT
 CATCAAAGCTGCAATTGGTTGTGGTATTGTGAAAGCATACTAACTGGGTGAAGTTCAAGGCTCAAATC
 CAACTGAACAAGAAGTGTTCAGCTGTAAAACATACCAAAATCAAGGGAATCCCCAACTTGTATGATGCCA
 ACGATGCAGGGAGCCGAACTCTACTGAATGCACACTTATCCTGACTGAGGGAGACTCAGCAAAAACCTCT
 AGCCGTTTCAGGCCTTGAGTGGTTGGAAGAGACAAATATGGGGTGTCCCTCTTAGAGGAAAGATACTC



[View online >](#)

AATGTGCGAGAAGCCTCTCATAAACAGATCATGGAAAATGCTGAAATTAACAATATCATCAAGATTGTGG
GTCTCCAGTACAAGAAAACTATGAAGATGAAGATTTCATTGAAAACCTCTCGTTATGGGAAGATCATGAT
TATGACAGATCAGGACCAAGATGGTTCCACATCAAAGGCTTGCTGATCAATTTTATCCATCACAATTGG
CCATCTCTTCTGCGACATCGTTTTCTAGAAGAATTTATCACTCCCATTGTAAAGGTGCCAAAAATAAGC
AAGAAATAGCATTCTATAGTCTCCCGAGTTTGAAGAATGGAAAAGTTGACTCCGAATCATAAAAAAGT
GAAAAGTCAAATACTACAAAGTTTGGGCACCAGCACATCAAAGGAAGCTAAGGAATTTTTGCAGATATG
AAACGACATCGTATTCAGTTCAAATACTCTGGCCCTGAAGATGATGCTGCGATCAGCCTGGCCTTAGTA
AAAAACAAGTTGATGATCGAAAAGGAATGGTTAACTAATTTTATGGAAGACAGAAGACAGCGGAAGTTACT
TGGCCTTCTGAGGATTATTTGTATGGACAAAGCACTTCTGACCTGACCTATAATGACTTCATAAAACAAG
GAACTCATCTCTCTCCAACCTGATAATGAAAGGTCTATCCCATCCATGGTAGACGGTTTGAACCAG
GTCAGAGAAAAGTTTTGTTTACTTGTTCAAACGGAATGACAAGCGAGAAGTGAAGTTGCCAGTTAGC
TGGGTGAGTGGCAGAAATGTCCTTATCACCATGGTGAAGTGTGACTGATGATGACCATTATCAATTTG
GCGCAGAAATTTGTGGGTAGCAATAATTTGAACCTTTTACAGCCATTGGTCAGTTTGAACCAGGCTGC
ATGGTGGCAAGGACTCAGCTAGTCTAGGTACATCTTTACAATGCTCAGCCCTTTGGCTCGGTTGTTGTT
TCCTCCAAAAGATGATCACACATTACGGTTTCTATATGATGACAACCAACGTGTTGAGCCTGAATGGTAC
ATTCTATAATACCCATGGTGTGATAAATGGTGTGAGGGAATGGTACTGGGTGGTCCGCAAAATCC
CCAACCTTGTATGTGCGTGAAGTTGTGAATAATATCAGACGGCTTCTGGATGGAGAGGAGCCCTACCCAT
GCTCCCAAGTTATAAGAATTTCAAAGGTTACTATTGAAGAAGTGGCTTCAAATCAGTATGTGATTAATGGA
GAAGTAGCTATTCTGGATTCTACAACCATTTGAAATCTCAGAGCTTCCCATCCGAACGTGGACTCAGACAT
ATAAAGAACAGGTTCTAGAACCATGTTGAATGGAAGTGAAGAAGACCCCTCTCTAATAACAGACTATAG
GGAATACCATACAGATACCACTGTGAAGTTTGTCAATAAGATGACTGAAGAAAACTGGCAGAGGCAGAG
AGAGTCGGCTACACAAAGTCTTCAAACCCAGAGTGTCTCACTTGAACCTCTATGGTCTTTTTGACC
ATGTAGTTGCTTAAAGAAATATGACACTGTGTTGGATATTCTAAGAGACTTCTTTGAGCTCAGGCTTAA
ATATTATGGATTAAAGAAAGAAATGGCTTCTAGGAATGCTTGGTGCAGAATCTTCTAAACTGAATAATCAA
GCTCGCTTTATATTAGAGAAAATAGATGGCAAAATAGTCATTGAAAATAAACCTAAAAAAGAAATTAATA
AAGTTCTGATTACAGAGAGGCTACGACTCTGACCCTGTGAAAGCCTGGAAAAGAGCTCAGCAGAAGTTCC
AGATGAAGAAGAAAATGAAGAAAGTGAAGTGAAGTGAAGTGAAGTGAAGTGAAGTGAAGTGAAGTGAAGT
ACCTTCAACTACCTTCTCGACATGCCCTGTGGTATCTGACCAAGGAGAAGAAGGATGAGCTGTGCAAAAC
AAAGAAACGAGAAGGAACAAGAGCTCAACACATTAAGCAAAAGAGTCCATCAGATCTGTGAAGGAAGA
TCTGGCTGTTTTATTGAAGAACTGGAGTTGTGAGGCAAGGAAAAGCAGGATGAACAAGTGGGCTT
CCTGAAAAGGCGGGAAAGCAAAAGGGAAGAAAGCACAGATGTGTGCTGACGCTTTCCTCTCCTCGGG
GCAAAAGAGTCATCCCCAAGTGAAGTGTGGAGATGAAAGCTGAGGCAGAGAAGAAAATTAGGAAGAAAAT
TAAGAGTGAAAACGTTGAGGGTACCCCTGCTGAGGATGGTGCAGAACAGGAAAGCCTCCGGCAACGAATA
GAGAAGAAGCAGAAGAAAGAGCCAGGTGCAAAAGAGCAGACTACATTGCCGTTTAAAGCCTGTCAAAAAAG
GGAGGAAGAAAACCCCTGGTCTGACTCTGAGTCAAGCAGTGAAGCAGTGAAGTGAAGTGAAGTGAAGT
TCCTCGACAAAAGAGCAAAAGAGTGTGACGCAAAAGCCAAATTCACAGTGGATTTAGACTCGGATGAA
GATTTCTCAGGTTTGGATGAGAAGGATGAGGATGAAGATTTCTCCCATTAGATGCTACTCCACCTAAGG
CCAAAATCCCCCAAAAAATACTAAAAAGCACTGAAGACCCAGGGAAGCTCCATGTGCGTAGTTGATCT
TGAAAGTGAAGTGAAGGACAGTGTGCCAGCTTCTCCAGGCTTCTGCTGCTGACTTCCAGCGGAAACT
GAACAGTCAAAGCCATCCAAAAGACCGTGGGAGTGAAGAAGACAGCAACCAAAAGCCAGTCTTCAGTCT
CCACTGCTGGTACCAAAAAGAGAGCTGCGCCAAAGGGAACCAATCAGATTCAGCCTTGAAGTGTGCTGT
CTCGAAAAACCTGCTCCTGCCAAAGCCAAAGACAGTGCAGAAAAGGAAGCCATCTTCTTCTGATAGCTCT
GACTCTGATTTTGAAGAGCAATTTCTAAAGGTGCCACGAGCAAGAAAAGCAAGGAGAGGAACAGGACT
TCCCTGTGGACTTGAAGACACGATAGCTCCTCGAGCCAAATCTGACCGGCGAGGAAGCCAATTAAGTA
CCTGGAGGAGTCCGATGACGATGACGACCTCTC

ACGCGTACGCGGCCGCTCGAG - GFP Tag - GTTTAA

Protein Sequence: >MG219695 representing NM_011623
 Red=Cloning site Green=Tags(s)

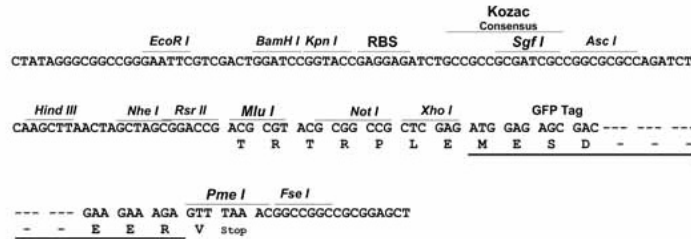
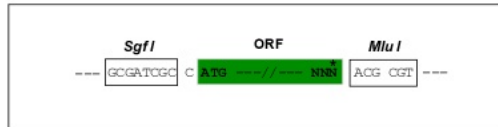
MEL SPLQPVNENMLMNKKKNEDGKKRLSIERIYQKKTQLEHILLRPDITYIGSVELVTQQMWWYDEDVGIN
 YREVTVPGLYKIFDEILVNAADNKQRDPKMSCIRVTIDPENNVISIWNGKGIPVVEHKVEKIYVPALI
 FGQLL TSSNYDDDEKKVTGGRNGYGAKLCNIFSTKFTVETASREYKMKFKQTWMDNMGRAGDMELKPFSG
 EDYTCITFQPDLSKFKMQSLDKDIVALMVRRAYDIAGSTKDVKVFVFLNGNSLPVKGFVRSYVDLYLKDKVDE
 TGNLSKVIHEQVNPWEVCLTMSERGFQISFVNSIATSKGGRHVVDYVADQIVSKLLVDVVKKNKGGVAV
 KAHQVKNHMWIFVNALIENPTFDSQTKENMTLQAKSFGSTCQLSEKFIKAAIGCGIVESILNWWKFAQI
 QLNKKCSAVKHTKIKGIPKLDANDAGSRNSTECTLILTEGDSAKTLAVSGLGVVGRDKYGVFPLRGKIL
 NVREASHKQIMENAEINNIKIVGLQYKKNYEDEDSLKTLRYGKIMIMTDQDQDGSNIKGLLINFIHNNW
 PSSLLRHRFLEEFITPIVKVSKNQEIAFYSLPEFEEWKSSTPNHKKWVKYKGLGTSTSKEAKEYFADM
 KRHRIQFKYSGPEDDAASLAFSKKQVDDRKEWLTNFMEDRRQRKLLGLPEDYLYGQSTSYLTYNDFINK
 ELILFNSDNERSIPSMVDGLKPGQRKVLFTCFKRNDKREVKVAQLAGSVAEMSSYHHGEMSLMNTIINL
 AQNFVGSNNLNLQPIGQFGTRLHGGKDSASPRYIFTMLSPLARLLFPPKDDHTLRFLYDDNQRVPEWY
 IPIIPMVLINGAEGIGTWSCKIPNFDVREVVNIRRLDGEPELPLPSYKNFKGTIEELASNQYVING
 EVAILDSTTIEISELPIRTWTQTYKEQVLEPMLNGTEKTPSLITDYREYHTDTTVKFKVIMTEEKLAEAE
 RVGLHKVFKLQSSLTCSMVLFDHVGLCKKYDVLVDILRDFELRLKYYGLRKEWLLGMLGAESSKLNQ
 ARFILEKIDGKIVENPKKELIKVLIQRGYSDPVKAWKEAQQKVPDEEENEESDTETSTSDSAEAGP
 TFNYLLDPLWYLTKKKDELCKQRNEKEQELNLTQKSPSDLWKEDLAVFIEELEVVEAKEKQDEQVGL
 PGKAGKAKGKKAQMCADVLPSPRGKRVIPQVTVMKAEAEKKIRKKIKSENVGTPAEDGAEPGSLRQRI
 EKKQKKEPGAKKQTTLPFKPVKGRKKNPWSDESDVSSNESNDVPPRQKEQRSAAAKAKFTVDLDSDE
 DFSGLDEKDEDEFLPLDATPPKAKIPPKNTKKALKTQGSMSVVDLESDVKDSVPASPGVPAADFFPAET
 EQSKPSKKTGVGKKTATKSQSSVSTAGTKKRAAPKGTKSDSALSARVSEKPAPAKAKNSRKRKPPSSSDSS
 DSDFERAISKGATSKKAKGEEQDFPVDLEDTIAPRAKSDRARKPIKYLEESDDDDDLF

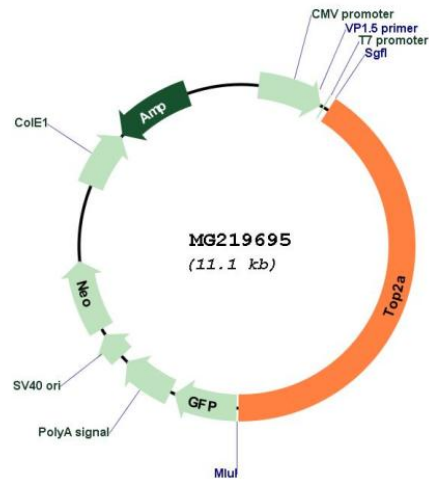
TRTRPLE - GFP Tag - V

Restriction Sites: SgfI-MluI

Cloning Scheme:

Cloning sites used for ORF Shutting:



Plasmid Map:


ACCN: NM_011623

ORF Size: 4584 bp

OTI Disclaimer: Due to the inherent nature of this plasmid, standard methods to replicate additional amounts of DNA in E. coli are highly likely to result in mutations and/or rearrangements. Therefore, OriGene does not guarantee the capability to replicate this plasmid DNA. Additional amounts of DNA can be purchased from OriGene with batch-specific, full-sequence verification at a reduced cost. Please contact our customer care team at custsupport@origene.com or by calling 301.340.3188 option 3 for pricing and delivery.

The molecular sequence of this clone aligns with the gene accession number as a point of reference only. However, individual transcript sequences of the same gene can differ through naturally occurring variations (e.g. polymorphisms), each with its own valid existence. This clone is substantially in agreement with the reference, but a complete review of all prevailing variants is recommended prior to use. [More info](#)

OTI Annotation: This clone was engineered to express the complete ORF with an expression tag. Expression varies depending on the nature of the gene.

Components:	The ORF clone is ion-exchange column purified and shipped in a 2D barcoded Matrix tube containing 10ug of transfection-ready, dried plasmid DNA (reconstitute with 100 ul of water).
Reconstitution Method:	<ol style="list-style-type: none">1. Centrifuge at 5,000xg for 5min.2. Carefully open the tube and add 100ul of sterile water to dissolve the DNA.3. Close the tube and incubate for 10 minutes at room temperature.4. Briefly vortex the tube and then do a quick spin (less than 5000xg) to concentrate the liquid at the bottom.5. Store the suspended plasmid at -20°C. The DNA is stable for at least one year from date of shipping when stored at -20°C.
RefSeq:	<u>NM_011623.2</u> , <u>NP_035753.2</u>
RefSeq Size:	5217 bp
RefSeq ORF:	4587 bp
Locus ID:	21973
UniProt ID:	<u>Q01320</u>
Cytogenetics:	11 62.91 cM
Gene Summary:	Control of topological states of DNA by transient breakage and subsequent rejoining of DNA strands. Topoisomerase II makes double-strand breaks. Essential during mitosis and meiosis for proper segregation of daughter chromosomes. May play a role in regulating the period length of ARNTL/BMAL1 transcriptional oscillation (PubMed:24321095).[UniProtKB/Swiss-Prot Function]