

Product datasheet for **MG212840**

Olfr837 (NM_146565) Mouse Tagged ORF Clone

Product data:

Product Type:	Expression Plasmids
Product Name:	Olfr837 (NM_146565) Mouse Tagged ORF Clone
Tag:	TurboGFP
Symbol:	Olfr837
Synonyms:	MOR152-2
Mammalian Cell Selection:	Neomycin
Vector:	pCMV6-AC-GFP (PS100010)
E. coli Selection:	Ampicillin (100 ug/mL)
ORF Nucleotide Sequence:	>MG212840 representing NM_146565 Red=Cloning site Blue=ORF Green=Tags(s)

TTTTGTAATACGACTCACTATAGGGCGGCCGGAATTCGTCGACTGGATCCGGTACCGAGGAGATCTGCC
GCC**CGATCGCC**

ATGGAAGTAAAAACAAGTCGGTTGTTTTGGATATTTTCCTTCATGGACTCACAGATGACATAGAGCTGC
AGCCCTTCATCTTTGGCTTCTTTTTATGCATGATTTGATCACCATCTTTGAAATCTTCTATAATGTT
AGCCATCATTTTTGACTCCACCTCCACAAACCATGACTTCTTCTCTGCCATCTGGCTTTAATGAC
ATGATTTAATCAGCATTACAGTCCAAAGATGTTGGTGAATGTACAAACACAGGATCAGAGGATCACTT
TAGCTGGCTGTCTGAGCCAGGGATGCTTTGTGGCTGTATGTTTCATCTTTGAATGTTTTCTCCTTGGAA
AATGGCCTATGACCGCTACACAGCCATTTGTTTTCTCTAAGATACACAGTCTCATCAATCCCTTCTTC
TGTGTTATTGTGGTTCTAATCTCTCTATTTATTAGTATTGTAATGGTCTGCTGCATAGTCTGATGGTGC
TGCACTTGTCTTCTGCACAGACCTGAAATCCTCCACTTCTTCTGTGAAATGCACAAATCCTCAAGCT
TGCTGTCTGACAGCCTAATCAACAACATCTTGATATTTGTTACATCTTCTATTTTTGCTGGTGTCTCT
CTATGTGGAATAATCTTTCTTATGTTACATTGTTTCTACAGTATTGAAATGCCATCATCAGAAGGAA
AGTATAAAGCCTTCTCTACTTGTGGTCTCATTATCAGTTGTTTCATTGTTTTATGGGACAGGTTTTGG
TGTATACATTACCTCAGTAGTAATTGATCACCGAAGGAAATGCTATTGCTTCAGTGATGATTTCCATA
GTTCCCTCAATGTTGAATCCCTTTGTTTATAGTTTGAAGAACAGGATATGAAAGAAGCACTGAAGAAGG
TAATTGGTAGAACAGTTTCTCTTCCA

ACGCGTACGCGGCCGCTCGAG - GFP Tag - GTTTAA



[View online »](#)

Protein Sequence: >MG212840 representing NM_146565
 Red=Cloning site Green=Tags(s)

MEVKNKSVVLDIFLHGLTDDIELQPFIFGFFLCMYLITIFGNLLIMLAIIFDShLHKPMYFFLCHLAFND
 MYLISITVPKMLVNVQTQDRITLAGCLSQGCFAVCFIFECFLGIMAYDRYTAICFPLRYTVLINPFF
 CVIVVLIISLFISIVNGLLHSLMVLHLFSFCTDLEILHFFCEIAQILKLACSDSLINNILIFVTSSIFAGVP
 LCGIIFSYYHIVSTVLKMPSSSEGGKYKAFSTCGSHLSVVSFLFYGTGFGVYITSVVIDSPKEIAIASVMYSI
 VPPMLNPFVYSLKNRDMKEALKKVIGRVSLP

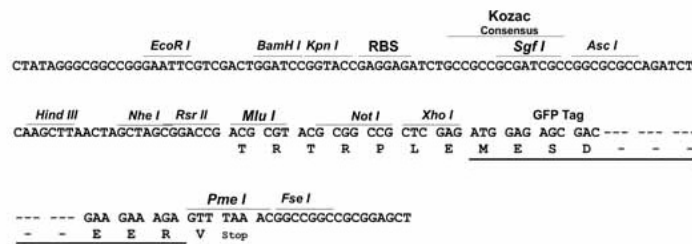
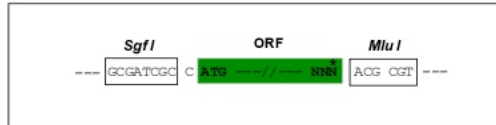
TRTRPLE - GFP Tag - V

Restriction Sites:

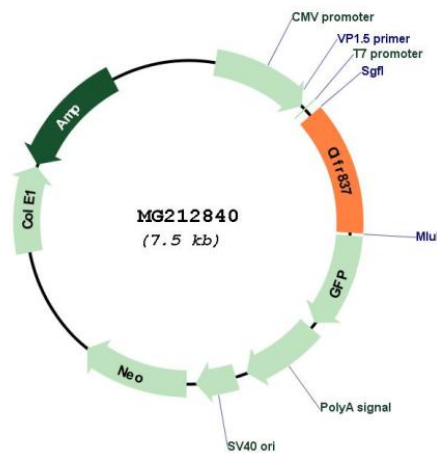
Sgfl-MluI

Cloning Scheme:

Cloning sites used for ORF Shuttling:



Plasmid Map:



ACCN: NM_146565

ORF Size: 936 bp

OTI Disclaimer:	The molecular sequence of this clone aligns with the gene accession number as a point of reference only. However, individual transcript sequences of the same gene can differ through naturally occurring variations (e.g. polymorphisms), each with its own valid existence. This clone is substantially in agreement with the reference, but a complete review of all prevailing variants is recommended prior to use. More info
OTI Annotation:	This clone was engineered to express the complete ORF with an expression tag. Expression varies depending on the nature of the gene.
Components:	The ORF clone is ion-exchange column purified and shipped in a 2D barcoded Matrix tube containing 10ug of transfection-ready, dried plasmid DNA (reconstitute with 100 ul of water).
Reconstitution Method:	<ol style="list-style-type: none"> 1. Centrifuge at 5,000xg for 5min. 2. Carefully open the tube and add 100ul of sterile water to dissolve the DNA. 3. Close the tube and incubate for 10 minutes at room temperature. 4. Briefly vortex the tube and then do a quick spin (less than 5000xg) to concentrate the liquid at the bottom. 5. Store the suspended plasmid at -20°C. The DNA is stable for at least one year from date of shipping when stored at -20°C.
RefSeq:	NM_146565.2 , NP_666776.1
RefSeq Size:	1040 bp
RefSeq ORF:	939 bp
Locus ID:	258558
Cytogenetics:	9 A2
Gene Summary:	Olfactory receptors interact with odorant molecules in the nose, to initiate a neuronal response that triggers the perception of a smell. The olfactory receptor proteins are members of a large family of G-protein-coupled receptors (GPCR) arising from single coding-exon genes. Olfactory receptors share a 7-transmembrane domain structure with many neurotransmitter and hormone receptors and are responsible for the recognition and G protein-mediated transduction of odorant signals. The olfactory receptor gene family is the largest in the genome. The nomenclature assigned to the olfactory receptor genes and proteins for this organism is independent of other organisms. [provided by RefSeq, Jul 2008]