

Product datasheet for **MG211695**

Synrg (NM_194341) Mouse Tagged ORF Clone

Product data:

Product Type:	Expression Plasmids
Product Name:	Synrg (NM_194341) Mouse Tagged ORF Clone
Tag:	TurboGFP
Symbol:	Synrg
Synonyms:	Ap1gbp1; SYNG
Mammalian Cell Selection:	Neomycin
Vector:	pCMV6-AC-GFP (PS100010)
E. coli Selection:	Ampicillin (100 ug/mL)
ORF Nucleotide Sequence:	>MG211695 representing NM_194341 Red=Cloning site Blue=ORF Green=Tags(s)

TTTTGTAATACGACTCACTATAGGGCGGCCGGGAATTCGTCGACTGGATCCGGTACCGAGGAGATCTGCC
GCC**CGATCGCC**

ATGGCGCTGCGGCCGGGAGCCGGAGCCAGCGGCGCGGGGGCGGGCGGGGCCGGGGCCGGCGGGCCAGGCA
GCTTCATGTTTCTGTTGCAGGCGGAATGAGACCCCTCAAGGCCTGATTCCAATGCAACAGCAAGGATT
CCCTATGGTCTGTGCATGCAGCCCAATATGCAAGGCATGATGGGAATGAATTACAGCTCTCAGATGTCC
CAAGGACCGATTGCAATGCAGGCAGGAATACCAATGGGGCCAATGCCAGCAGCGGGTGTGCCTTTCTGG
GTCAGCCACCTTTCTTGAGCATGCGTCTCAGGCCCACAGTACACTCCAGACATGCAGAAGCAGTTTGC
GGAAGAGCAACAAAACGATTTGAACAACAACAAAGCTCTTAGAAGAAGAAAAGAAAAGACGTCAGTTT
GAAGAGCAAAAGCAAAAGCTCAGACTTCTCAGCAGCGTGAAGCCCAAGACAGGAGAGAAGAACAGAGACG
ATGCTTTGGAAGCCATAAAAGGAAACTTGGATGGGTTTTCCAGAGATGCTAAGATGCACCCCACTCCAGC
ATCACATCCAAAGAAACAAGGTGTGGGCGTGTTCCTCTCAGGACCCCTGCTCAGTCCAGAATGCCTCCT
TGGATTTACAATGAGAGTTTGGTTCAGATGCCTATAAGAAAATTTAGAAAACCAATGACTCCAACCTG
GAATAGATACTGCTAACTTTATCCCATCTGTATGTCATCTGGACTTCCCAGGAAACTCTCGGACAGAT
ATGGGCCCTTAGCTAATCGAACACACCTGGCAGGCTCACTAAGGAGGAGCTTTACACGGTTCTCGCCATG
GTAGCAGTAACACAGAGGGGTGTTCTGCCATGAGCCCTGATGCTTTGAGCCAGTTCCTCGCGGCTCCCA
TCCTACCTTAAGCGGCTTTCTATGACTCTGCCTACCCAGTGAGCCAGCCAACGGCGATGCCCTCTGG
CCCTACAGGCTCCATGCCCTCACCCCTTGACAACCCATCATGGGTATCAACCTTGTGGACCAGTGGGT
GGAGCTGCAGCACCAACTCCAGTGGCTTCATGCCAGCCTACCCATCAAACCAGGTGGGAAAAGACAGAAG
AAGATGACTTCCAGGATTTCAAGATGCTTCGAAATCAGGATCCATCGATGATTCCTTCACTGACTTCCA
AGAGATGCCTGCTTCTCAAACACAGTAATTCACAGCATGGAACAGTGTCCATCACTCTTGATCCCA
TTTCTGGAACCTAAAGCCTCCACAGACAAATACGCAGTGTCAAAGGGATTTCCACTGACAAGCCCTCTG
AAAACCTGCTTCGTTTGGAGAGTCTGGTGATAAATACAGTGTTCAGGGAACCGAGCAAACGACAGA
CAGTAAACCTTTAGGAGAGAGCTTTGCCGAGTTCAGATCCACAGGAACCGATGATGGCTTCACTGACTTC



[View online >](#)

AAGACCGCCGATAGTGTGTACCCCTAGAGCCACCCACAAAAGACACTTTCCCATCAGCTTTTGCCTCAG
 GAGCTGCACAGCAGACACAGACACAGGTGAAAACCCCTCTGAACTTAGAAGATCTAGATATGTTCTCCTC
 AGTGGATTGCAGTGGCGAGAAACAGGTGCCCTTTTTCAGCTACATTTAGCACAGCAAAGTCCGTTTCCACT
 CGACCTCAGCCAGCGGGCTCTGCAGCAGCGTGCAGCAGCTGGCATCCACTAAAACCTTCTAGTTTGGCAG
 ATGATTTTGGAGAGTTCAACCTCTTTGGGGAGTATTCAAACCTGCATCTGCTGGGGAGCAGGACGACTT
 TGCAGATTTTATGGCTTTCGGTAACAGCTCCATTTTCATCTGAGCCAAAAGCAAGTACAAGTATGAAGCC
 CTCAGGGAGGAAGTGAAGTCCCAGCCCTTGTCCAGCAGCACTGTGGAAGGGGCACAGCACCACCTCCTG
 CGGCAACCAAGTATGATGTCTTCAAACAGCTGTCCCTAGAGGGCCTGGGCTGGCCATGGAGGAGTTCAA
 AGAGAACAACCTTCCACCAAGAGTGAAGATGACTTTGCCGACTTCCACTCCAGTAAATTCTCATCCACG
 AGCTCAGACAAATCCCTGGGAGAGAAAGCCGTGGCTTTTTCAGACATGCCAAAGAAGACTCCTCCTCGGTGA
 AGTCTTTAGACCTCCCCTCCATCGGTGGCAGCAGTGTGGCAAGGAGGACTCTGAAGATGCACCTTCTGT
 TCAATTTGACATGAAATGGCTGATGTGGGAGGAGATCTTAAGCATGTCATGTCTGATAGCTCTTTGGAT
 TTACCAACAGTTAGTGGCCAGCATCCTCCTGCCGAGGATCGGCCTTGGCCAGTGAGGACGCTCTCCAG
 AGACTGCCTTCCCAGCTTTTCCAGCTTTAAAGACATGATGCCTCAGACCACTGAGCAGAAAGAGTTTGA
 AAGTGGGACTTCCAGGATTTACCAGGCAGGACATGCCACGGTGGACCGCAGCAAGAAACCTCATGT
 CCAAGCCCGGCTTCCAGTGTGGCTTCGACGAGACCCCAAGGAGGTGCAGACGACTTTGGAGAATTTT
 AAAGTGAAGAGTCCAAAATCAGCAAGTTTACTTCTTAGTAGCTAATCCAGAGCAAAAATGAAATCCAG
 TGAAGAAATGATCAAAAGTGAAGTGGCAACCTTTGACCTTTCTGTTCAAGGATCACACAAGAGGAGCTTG
 AGCCTTGGGGATAAAGAAATAAGCCGGTCTCTCCTTCCCAGCCCTGGAGCAGCCCTTCCAGAGACCGGT
 CCAACACTCTGAGTGAGAGGGCTGCGCTGCCCGTCCATCCGAGACAAGTACAAGGATCTCACTGGCAGGT
 GGAGGAAAATGAGAGATACCGGTATGAGTGGCAGAGATGCCTAGGAGCGCGCTGGATGTCATTAAGAAG
 GCAAATGACACCTTAAATGGCATTAGCAGCAGCTGTTTGCACAGAAGTATCCAGTCCGCTCAAGGCA
 TGGAGATCTTCTAGGTGTGGTGAAGTGTACCGGTAACCAAGCGTGTGGAGCTGGGGATAAAGCCAC
 TGCTGTGTGATGAGAACTCCAGCAGTTGCTGAAGGACATCGATAAAGTGTGGAACAACCTAATCGGC
 TTCATGTCACTTCCACACTCACACCAGATGAGAATTCAGTGGATTTTCTCCTGTATGTTACGGCCCG
 GGATCAAAAACGCTCAGGAGCTGGCTTGTGGAGTGTGTCTCTAAATGTGGACTCCAGGAGCCGGGCATT
 CAACTCGGAGACAGACGCTTCAAGCTGGCCTACGGAGGACACCAGTACCAGCCAGCTGTGCCAACTTC
 TGGATCAACTGTGTTGAACCAAGCCTCCCGCCTCCTTTGCCAGATCTGCTC

AGCGGACCGACGCGTACGCGGCCGCTCGAG - GFP Tag - GTTTAA

Protein Sequence:

>MG211695 representing NM_194341
 Red=Cloning site Green=Tags(s)

MALRPGAGASGAAGAGAGPGGAGSFMFPVAGGMRPPQGLIPMQQGFPMVSVMPNMQGMGMNYSSQMS
 QGPIAMQAGIPMGMPAAAGVPLGQPPFLSMRPAGPQYTPDMQKQFAEEQQKRFEQQKLLLEERKRRQF
 EEQKQKLRLLSSVKPKTGEKNRDDALEAIKGNLDGFSRDAKMHPTPASHPKKQGVGFPSQDPAQSRMP
 WIYNESLVPDAYKKILETTMTPTGIDTAKLYPILMSSGLPRETLGQI WALANRTPGRLTKEELYTVLAM
 VAVTQRGVPAMSPDALSQFPAAP IPTLSGFPMTLPTVPSQPTAMP SGPTGSMPLTLGQPI MGINLVGPVG
 GAAAPTSSGFMPA YPSNQVKGTEEDDFQDFQDASKSGSIDDSFTDFQEMPASSKTSNSQHNSAPSLIP
 FPGTKASTDKYAVFKGISTDKPSENPA SFGESGDKYSAFRELEQT TDSKPLGESFAEFRSTGDDGFTDF
 KTADSVSLEPPTKDTFPSAFASGAAQQTQVKTPLNLEDLDMFSSVDCSGEKQVPFSATFSTAKSVST
 RPQPAGSAAA SAALASTKTSSLADDFGEFNL FGEYSNPASAGEQDDFADFMAFGNSSISSEPKASDKYEA
 LREEVSPSPLSSSTVEGAQHPPAAATKYDVFKQLSLEGAGLAMEEFKENTSSTKSEDDFADFHSSKFSS
 SSDKSLGEKAVAFRHAKEDSSSVKSLDLPSIGSSVKGEDSEDALSVQFDMKLADVGGDLKHMVSDSSLD
 LPTVSGQHPPAAGSALASEDALPETAFFAFASFKDMMPQTTEQKEFESGDFQDFTRQDMP TVDRSQETSC
 PSPASSVASHETPKEGADDFGEFQSEKSKISKFDL VANSQSKMKSSEEMIKSELATFDL SVQGSHKRSL
 SLGDKEISRSSPSPALEQPFDRSNTLSERAALPVIRDKYKDLTGEVEENERYAYEWQRCLGSALDVIKK
 ANDTLNGISSAVCTEVIQSAQGM EYLLGVVEYRVTKRVELGIKATAVCSEKLQQLKIDKVVNNLIG
 FMSLATLTPDENSLDFSSCMLRPGIKNAQELACGVCLLNVD SRSRAFNSE TDSFKLAYGGHQYHASCANF
 WINCV EPKPPGLLLPDLL

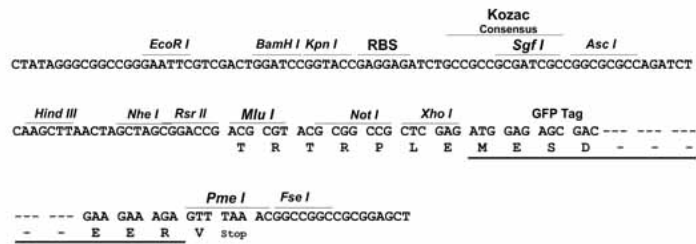
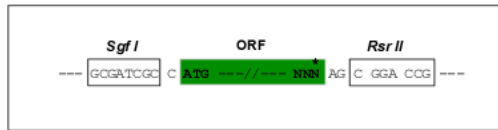
SGPTRRRLE - GFP Tag - V

Restriction Sites:

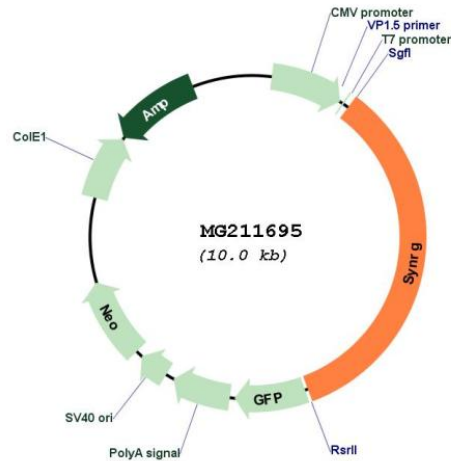
SgfI-RsrII

Cloning Scheme:

Cloning sites used for ORF Shuttling:



Plasmid Map:



ACCN: NM_194341

ORF Size: 3414 bp

OTI Disclaimer: The molecular sequence of this clone aligns with the gene accession number as a point of reference only. However, individual transcript sequences of the same gene can differ through naturally occurring variations (e.g. polymorphisms), each with its own valid existence. This clone is substantially in agreement with the reference, but a complete review of all prevailing variants is recommended prior to use. [More info](#)

OTI Annotation: This clone was engineered to express the complete ORF with an expression tag. Expression varies depending on the nature of the gene.

Components: The ORF clone is ion-exchange column purified and shipped in a 2D barcoded Matrix tube containing 10ug of transfection-ready, dried plasmid DNA (reconstitute with 100 ul of water).

Reconstitution Method:

1. Centrifuge at 5,000xg for 5min.
2. Carefully open the tube and add 100ul of sterile water to dissolve the DNA.
3. Close the tube and incubate for 10 minutes at room temperature.
4. Briefly vortex the tube and then do a quick spin (less than 5000xg) to concentrate the liquid at the bottom.
5. Store the suspended plasmid at -20°C. The DNA is stable for at least one year from date of shipping when stored at -20°C.

RefSeq: [NM_194341.2](#)

RefSeq Size: 4589 bp

RefSeq ORF: 3417 bp

Locus ID: 217030

UniProt ID: [Q5SV85](#)

Cytogenetics: 11 C

Gene Summary:

May play a role in endocytosis and/or membrane trafficking at the trans-Golgi network (TGN).
May act by linking the adapter protein complex AP-1 to other proteins (By similarity).
[UniProtKB/Swiss-Prot Function]