

Product datasheet for **MG210300**

Cd97 (BC006676) Mouse Tagged ORF Clone

Product data:

Product Type:	Expression Plasmids
Product Name:	Cd97 (BC006676) Mouse Tagged ORF Clone
Tag:	TurboGFP
Symbol:	Cd97
Synonyms:	AA409984; Cd97; TM7LN1
Mammalian Cell Selection:	Neomycin
Vector:	pCMV6-AC-GFP (PS100010)
E. coli Selection:	Ampicillin (100 ug/mL)



[View online »](#)

ORF Nucleotide Sequence:

>MG210300 representing BC006676
 Red=Cloning site Blue=ORF Green=Tags(s)

TTTTGTAATACGACTCACTATAGGGCGGCCGGAATTCGTCGACTGGATCCGGTACCGAGGAGATCTGCC
 GCC**CGCATCGCC**

ATGAGGGGCGTCAGATGCCCGGCTGCTTGTGGTGTGCATTTTACTGAGTCTCTCAGGAGCTGGAACCC
 AGAAGGCAGAGAGTAAGAACTGTGCCAAGTGGTGCCCTATCAACTCAAAATGTGTGAGTAAACAGAAGCTG
 TGTCTGCAAGCCCGGCTTCAGCTCGGAGAAGGAATTGATCACTAACCCCTGCAGAGAGCTGTGAAGACATC
 AACGAGTGTTTACTACCTGGATTTTCTGTGGAGACTTTGCCATGTGTAAGAACTCAGAGGGGAGTTACA
 CCTGCGTCTGTAACCTGGGATATAAGCTCCTTTCTGGTGCAGAATCTTTTGTAAACGAGAGTGAGAATAC
 ATGTCAAGATGTGGATGAGTGCAGCTCTGGGCAGCATCAATGTCACAATTCACCGTCTGCAAAAACACC
 GTAGGCTCCTACAAGTGCCTGCGTCCAGGTTGGAAGCCAACCTCTGGGTCCCTCCGTGGTCCAGACA
 CCATATGCCAAGAGCCACCGTCCCTACTTGGACTGCTGCCACAGCCACAGTCAGACTCTCTTGAG
 ATTCTCTGTTGAAGTCCAGAATCTGCTCCGTGACTTCAATCCAGCCACGGTCACTACACCATCCAGAAA
 CTCATCGAGGCTGTGGACAAGCTGCTGGAAGACCCCATGGAGACTGAAACCCAACAAGTAGCTGCCAGT
 TGCTCTCGAACCTGGAACAAAGCCTTCGGACCTTGCTCAGTTTTTACCCAAAGGCCCTTCACCTACAC
 GTCCCTTCAAATACTGAACTGTCCCTGATGGTGAAGGAGCAAGACAACAAAGATGTTACCACAGTGCAC
 CACGGCCAAACTTGGATGGAGCTGGACTGGGCTGTGACAGCTGGAGCCAAAATCTCAGAAAATGGCTCCT
 CGGTGGCAGGCATCCTGTCCAGCCAAACATGGAAGAGCTGTGGGCAACACCCCGCTGAACTTGGAGCA
 GAGAAGGGCCTCCTTGGAGGACTTCTATGGAAGCCGATCCGAGTGTCTCACTTAAGCTTCTCTCAAAC
 ATCAATTCTGTCTTCTGACCAACACGAACACTGAAAAGCTCGCCTCGAATGTCACGTTCAAGTTCGACT
 TTACTTCTGTGGAGTCAATTGAGCCACGTCATGAGCTGATATGTGCCTTCTGGAAGCCCAACGGGAA
 TGGGTACTGGGACACCGACGGCTGCTCAATGAATGGCACTGGCTTCTGCCACTGCAACCACCTGACCAGC
 TTTGCCATCCTAATGGCTCAGTACCATGTGACAGCCAAAGGCTGGAATTGATCACCAAGGTGGGGCTGT
 TGTGTCCCTGATCTGCCTGCTGCTGTGCATCCTGACCTTCTGCTGGTGAAGCCCATCCAGAGCTCTCG
 AACCATGGTGCACCTGCACCTGTGCATCTGCCTTCTCTGGGCTCAATCATATTCTGGTCCGGCTGGAG
 AATGAAGGGGGTGAAGTGGGCTGCGCTGCCGCTGGTGGCCGTGATGCTGCATTTCTGCTTCTGGCCG
 CCTTCTGCTGGATGGCACTGGAGGGCTGGAGCTACTTCTGGTGGTGCCTGTGTTCCAGGGCCAAGG
 CCTGAGTACATGGCAACGCTGCCTGATTGGCTACGGGGTGGCCCTCCTCATCGTGCCATCTCAATGGCA
 GTTGTCAAATGGATGGCTATGGGCATGCAACATACTGCTGGCTGGACTTAGGAAGCAGGGCTTCTCT
 GGAGCTTTTCGGACCCGTGGCCTTCATCATTTTCTGCAATGCTGCCATTTTCGTGATCACTGTCTGGAA
 GCTCACAAGAAGTTTTCTGAAATCAACCCAAACATGAAGAAGTTAAGGAAGGCGAGGGTCTGACCATC
 ACCTCCATCGCCAGCTCCTTGTGCTGGGCTGCACCTGGGGCTTCGGCCTGTTTCTTCAACCCCAT
 GCACATGGCTATCCTACATCTTACCCTGCTCAACTGCCTGCAGGGCCTATTCTCTATGTGATGCTCTG
 CCTGCTCAACAAAAGGTGAGGGAAGAGTACTGAAAATGGGCTGCATGGTCACTGGGAGCAAGTACACA
 GAGTTCAACTCTCCACAACAGGCACTGGCACCAGCCAAACACGGGCTCTCAGGTCTCAGAATCAGGGA
 TG

ACGCGTACGCGGCCGCTCGAG - GFP Tag - GTTTAA

Protein Sequence: >MG210300 representing BC006676
 Red=Cloning site Green=Tags(s)

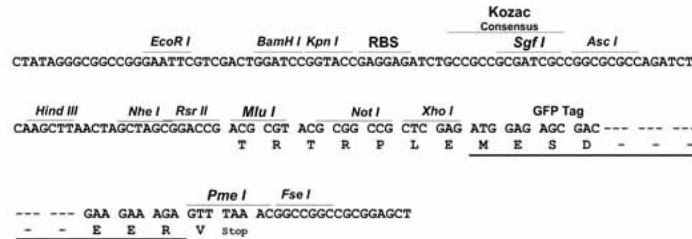
MRGVRCPLLVCILLSLSGAGTQKAESKNC AKWCPINSKCVSNRSCVCKPGFSSEKELITNPAESCEDI
 NECLLPGFSCGDFAMCKNSEGSYTCV CNLGYKLLSGAESFVNESENTCQDVDECSSGQHCHNSTVCKNT
 VGSYKCHCRPGWKPTSGSLRGPDTICQEPFPPTWLLPTAHSQTL LRF SVEVQNLLRDFNPATVNYTIQK
 LIEAVDKLLEDPMETETQQVAAQLLSNLEQSLR TLAQFLPKGPF TYTSPSNTELSLMVKEQDNKDVTTVH
 HGQTMELDWAVTAGAKISENGSSVAGILSSPNMEKLLGNTPLNLEQRRASLEDFYGSPIPSVSLKLLSN
 INSVFLTNTNTEKLASNVTFKDFDTSVESIEPRHELICAFWKAHNGNGYWDTDGCSMNGTGFCHCNHLTS
 FAILMAQYHVQDPRELEITKVGLLLSLICLLLCILTFLLVKPIQSSRTMVHLHLCICLFLGSIIFLVGVE
 NEGGEVGLRCRLVAVMLHF CFLAAFCWMALEGVELYFLVVRVFQGGQLSTWQRCLIGYGVPLLIVAI SMA
 VVKMDGYGHATYCW LDFRKQGF LWSFSGPVAFIIFCNA AIFVITVWKLTKKFSEINPNMKKL R KARVLT I
 TSIAQLLVLGCTWGFGLFLFNPSTWLSYIF TLLNCLQGLFLYVMLCLLNKKVRE EYWKWACMVTGSKYT
 EFNSSTTGTGTSQTRALRSESSEGM

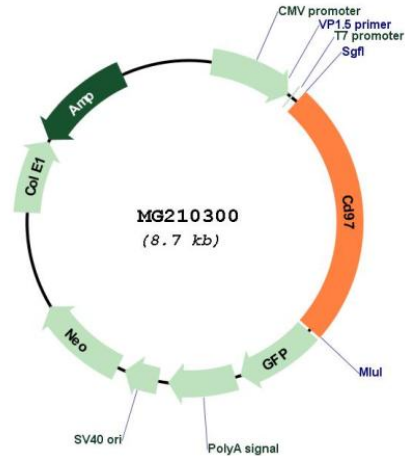
TRTRPLE - GFP Tag - V

Restriction Sites: SgfI-MluI

Cloning Scheme:

Cloning sites used for ORF Shutting:



Plasmid Map:


ACCN: BC006676

ORF Size: 2174 bp

OTI Disclaimer: The molecular sequence of this clone aligns with the gene accession number as a point of reference only. However, individual transcript sequences of the same gene can differ through naturally occurring variations (e.g. polymorphisms), each with its own valid existence. This clone is substantially in agreement with the reference, but a complete review of all prevailing variants is recommended prior to use. [More info](#)

OTI Annotation: This clone was engineered to express the complete ORF with an expression tag. Expression varies depending on the nature of the gene.

Components: The ORF clone is ion-exchange column purified and shipped in a 2D barcoded Matrix tube containing 10ug of transfection-ready, dried plasmid DNA (reconstitute with 100 ul of water).

Reconstitution Method:

1. Centrifuge at 5,000xg for 5min.
2. Carefully open the tube and add 100ul of sterile water to dissolve the DNA.
3. Close the tube and incubate for 10 minutes at room temperature.
4. Briefly vortex the tube and then do a quick spin (less than 5000xg) to concentrate the liquid at the bottom.
5. Store the suspended plasmid at -20°C. The DNA is stable for at least one year from date of shipping when stored at -20°C.

RefSeq: [BC006676](#), [AAH06676](#)

RefSeq Size: 2737 bp

RefSeq ORF: 2174 bp

Locus ID: 26364

Cytogenetics: 8 40.22 cM

Gene Summary: Receptor potentially involved in both adhesion and signaling processes early after leukocyte activation. Plays an essential role in leukocyte migration.[UniProtKB/Swiss-Prot Function]