

## Product datasheet for **MG209248**

### Acot11 (NM\_025590) Mouse Tagged ORF Clone

#### Product data:

Product Type:	Expression Plasmids
Product Name:	Acot11 (NM_025590) Mouse Tagged ORF Clone
Tag:	TurboGFP
Symbol:	Acot11
Synonyms:	1110020M10Rik; 2010309H15Rik; AW060409; BFIT; BFIT1; mKIAA0707; Thea; Them1
Mammalian Cell Selection:	Neomycin
Vector:	pCMV6-AC-GFP (PS100010)
E. coli Selection:	Ampicillin (100 ug/mL)



[View online »](#)

**ORF Nucleotide Sequence:**

>MG209248 representing NM\_025590  
 Red=Cloning site Blue=ORF Green=Tags(s)

TTTTGTAATACGACTCACTATAGGGCGGCCGGAATTCGTCGACTGGATCCGGTACCGAGGAGATCTGCC  
 GCC**GCGATCGCC**

ATGATTCAAGATGTGGGCAACCACTTGCAGGGGCTTCGCCTCTATGTTCTCTAATCGCACATCCCGGA  
 AGTCAATCTCCATCCGGAGTCTGGAGACCCTCTACCATGGCAGAGGGTGAAGGATACCGAACCACCCAC  
 GGAGGTGCAGATGAGCCAGCTGGTACTGCCCTGCCACACCAACCACCGTGGGGAGCTGAGCATTGGACAG  
 TTGCTCAAGTGGATCGACACCACAGCCTGCCTATCAGCGGAGAGGCATGCTGGCTGTCCCTGCGTCACAG  
 CCTCTATGGATGACATCTACTTCGACCATACCATTAGTGTGGCCAAAGTGGTGAATCAAGGCCAAGGT  
 GAACCGGGCCTTCAACTCCAGCATGGAGGTGGGAATCCAGGTGGTCTCTGAGGATCTGTGCTCTGAGAAG  
 CAGTGGAGTGTCTGCAAGGCCTTGGCCACCTTTGTGGCCACCGGGAGCTCTCAAGGTGAAGCTGAAGC  
 AGGTCATCCATTGACCGAGGAGGAGAAGACTGAACATGGGGTGGCGCTGAGCGCCGGCGTATGCGACT  
 GGTCTATGCAGACACCATCAAAGATCTCCTAACCCACTGTGTATCCAGGACGATTTGGACAAGGACTGC  
 AGCAATATGGTGGCAGCCGAGAAGACCCGAGTGGAGAGTGTGGAGCTGGTGTGCTCCTCACGCCAATC  
 ATCAGGGCAATACCTTCGGGGGACAGATCATGGCTTGGATGGAGAATGTGGCCACCATTGCAGCCAGCCG  
 GCTCTGTACGCCACCCTACGCTCAAGGCCATCGAGATGTTCCATTTCCGAGGCCCGTCTCAGGTGGGG  
 GACCGTCTGGTGTCAAGGCCATCGTGAATAACGCCTTTAAGCACAGCATGGAGGTGGGTGTGTGTGTGG  
 AGGCGTACCGCCAGGAAGCTGAGACCCAGCGCCGGCACATCAACAGCGCCTTCATGACCTTCGTGGTCTCT  
 GGACAAAGATGACCAGCCTCAGAAGCTGCCCTGGATTCTGCCAGCCTGGAGAGGGTGAACGGCGATAC  
 CGAGAAGCCAGTCCAGGAAGAAGATCCGCCTGGACAGGAAATACCTTGTGTCTGTAAGCAGGCAGAAG  
 TGGCCCTGTCTGTCCCTGGGACCCTAGCAACCAAGGTATACCTGAGCTACTACAACGTCTCCTCTGAA  
 GACGCTCATGGCCAAGGACAACCTGGGTGCTGTCCGTGGAGATCAGCGAGGTCCGCCTGTACATCCTAGAA  
 GAGGACTTCTCTCTTTCACTTGGAGATGGTGGTAAATGTGGATGCCGCCAGGTCTTTTCACTGCTGT  
 CAGACCTGCGCAGGAGACCAGAGTGGGACAAGCATTACCGGAGTGTGGAGCTGGTGCAGCAAGTGGATGA  
 GGATGACGCCATCTACCACGTATCAGCCCCGCCCTGAGCGGGAACACCAAGCCCCAGGACTTTGTGATC  
 CTGGCCTCTAGGCGGAAGCCTTGTGACAATGGGACCCCTATGTCATTGCCCTGAGGTGGTGCAGCTGC  
 CCACGCACCATGAGACACCGGAATACCAACGTGGGAGACTCTCTGTTCAAGGCTTCTGTCTGTGGCGTGA  
 GGGGGACCAGATGACTAAGTTTTCTACTACAACCAAGGCCACCCCGGCTTTCTCAACTATGTGACCACC  
 AATGTGTCCGGCCTGTCTCAGAATTCTACAACACTTTCAAGGCTTGTGAGAGTTTTCTGTTGGACAACC  
 GGAAATGACCTAGCTCCAGCCTCCAGACCCTC

**ACGCGTACGCGGCCGCTCGAG** - GFP Tag - GTTTAA

**Protein Sequence:**

>MG209248 representing NM\_025590  
 Red=Cloning site Green=Tags(s)

MIQVGNHLRRGFASMFNRTSRKSI SHPESGDPPTMAEGEGYRNPTEVQMSQLVLPCHTNHRGELSIGQ  
 LLKWI DT TA CL SAERHAGCPCVTASMDIYFDHTISVGQV VNIKAKVNRAFNSMEVGIQV VSEDL CSEK  
 QWSVCKALATFVAHREL SKV K L K Q V I P L T E E E K T E H G V A E R R R M R L V Y A D T I K D L L T H C V I Q D D L D K D C  
 S N M V P A E K T R V E S V E L V L P P H A N H Q G N T F G G Q I M A W M E N V A T I A A S R L C H A H P T L K A I E M F H R G P S Q V G  
 D R L V L K A I V N N A F K H S M E V G C V E A Y R Q E A E T Q R R H I N S A F M T F V V L D K D D Q P Q K L P W I R P Q P G E G E R R Y  
 R E A S A R K K I R L D R K Y L V S C K Q A E V A L S V P W D P S N Q V Y L S Y Y N V S S L K T L M A K D N W V L S V E I S E V R L Y I L E  
 E D F L S F H L E M V V N V D A A Q V F Q L L S D L R R R P E W D K H Y R S V E L V Q Q V D E D D A I Y H V I S P A L S G N T K P Q D F V I  
 L A S R R K P C D N G D P Y V I A L R S V T L P T H H E T P E Y Q R G E T L C S G F C L W R E G D Q M T K V S Y Y N Q A T P G F L N Y V T T  
 N V S G L S S E F Y N T F K A C E S F L L D N R N D L A P S L Q T L

**TRTRPLE** - GFP Tag - V

**Restriction Sites:**

Sgfl-MluI

**Cloning Scheme:**


**ACCN:** NM\_025590

**ORF Size:** 1782 bp

**OTI Disclaimer:** The molecular sequence of this clone aligns with the gene accession number as a point of reference only. However, individual transcript sequences of the same gene can differ through naturally occurring variations (e.g. polymorphisms), each with its own valid existence. This clone is substantially in agreement with the reference, but a complete review of all prevailing variants is recommended prior to use. [More info](#)

**OTI Annotation:** This clone was engineered to express the complete ORF with an expression tag. Expression varies depending on the nature of the gene.

**Components:** The ORF clone is ion-exchange column purified and shipped in a 2D barcoded Matrix tube containing 10ug of transfection-ready, dried plasmid DNA (reconstitute with 100 ul of water).

**Reconstitution Method:**

1. Centrifuge at 5,000xg for 5min.
2. Carefully open the tube and add 100ul of sterile water to dissolve the DNA.
3. Close the tube and incubate for 10 minutes at room temperature.
4. Briefly vortex the tube and then do a quick spin (less than 5000xg) to concentrate the liquid at the bottom.
5. Store the suspended plasmid at -20°C. The DNA is stable for at least one year from date of shipping when stored at -20°C.

**RefSeq:** [NM\\_025590.4](#), [NP\\_079866.2](#)

**RefSeq Size:** 5668 bp

**RefSeq ORF:** 1785 bp

**Locus ID:** 329910

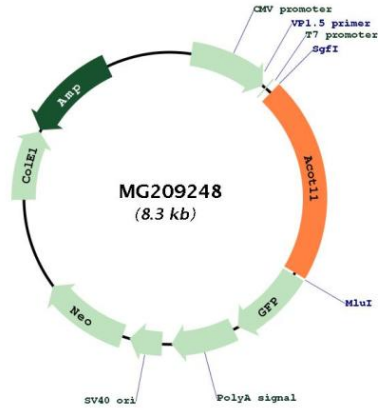
**UniProt ID:** [Q8VHQ9](#)

**Cytogenetics:** 4 C7

**Gene Summary:**

Has an acyl-CoA thioesterase activity with a preference for the long chain fatty acyl-CoA thioesters hexadecanoyl-CoA/palmitoyl-CoA and tetradecanoyl-CoA/myristoyl-CoA which are the main substrates in the mitochondrial beta-oxidation pathway.[UniProtKB/Swiss-Prot Function]

**Product images:**



Circular map for MG209248