

## Product datasheet for **MG207908**

### Lrrc14 (NM\_145471) Mouse Tagged ORF Clone

#### Product data:

Product Type:	Expression Plasmids
Product Name:	Lrrc14 (NM_145471) Mouse Tagged ORF Clone
Tag:	TurboGFP
Symbol:	Lrrc14
Synonyms:	E130306I01Rik; mKIAA0014
Mammalian Cell Selection:	Neomycin
Vector:	pCMV6-AC-GFP (PS100010)
E. coli Selection:	Ampicillin (100 ug/mL)



[View online »](#)

**ORF Nucleotide Sequence:**

>MG207908 representing NM\_145471  
 Red=Cloning site Blue=ORF Green=Tags(s)

TTTTGTAATACGACTCACTATAGGGCGGCCGGAATTCGTCGACTGGATCCGGTACCGAGGAGATCTGCC  
 GCC**CGGATCGCC**

ATGCACACTTGTGTTCTCAGCACGCGTCAGGTCCTCAGTGCCAGCCAGCTGCATGCCAGGCCCTGC  
 CCCTGCTGCCCGGAACTCTCCCTCTGCTCTCAAGGTGGCTTTCATGGACAAAAAGACGCTTGTGCT  
 CGGTGAGCTAGTGACACAGTGGCCCTTCCCTGCTCAGCTTCCAGCAGCTGCTGCAGGAGTGTGCCAC  
 TGCAGTCGAGCCCTGCTGCAGGAGCGGCTCAGCACAGAAAGCATGCAGGCTGTGATCCTGGGGCTGACAG  
 CTCGGATTCACTCAAGAAACAGAGGCTGGCAGCAGCCCTTGTGCAGGAAGCATGCATTGCGGGTTCT  
 GGACATGACGGGTCTCCTGGATGATGGTGTGGAGCAGGATCCTGAAACCATGAGCATGTGGGACTGTACA  
 GCCGCTGTAGCCAGAACGTGCATTGCCAGCAGCAGGTTGGGACTGCCGAGCCAGGGCTGCACCACTCC  
 CCGTGAAATCCGAGTAGACCTCGGGTAAACCGGGCTCGTACACATTCCTTCGTGAGGCCCTCCAAG  
 CAGTGTGGCCAGCCGCTGCGGCTGTGCTGCCGGGACCTGCGGGCTGAGGATCTACCCATCGGTAACACT  
 GTGGCCCTGCTACAGCTTTAGATGCAGGCTGTCTGCGCCGGATAGACCTGCGCTTCAATAACCTGGGCT  
 TGGTGGCCTGTCTGTCATTATCCACATGTGGCCGCTTTCAGCACTTAGCTAGCCTGAGGCTGCACTA  
 CGTGATGGGGACTCAAGACAGCCTCCGTGGACGGGGAGGACAACCTTTCGCTACTTTCTGGCCAGATG  
 GGCCGGTTATGTGTCTTCGGGAGCTCAGCATGGGGTCTTCTCTCTTTCAGGCAGGCTGGATCAACTGC  
 TCAGCACCTGCAGAGGCCCTGGAAAGCTAGAAGTGGCCTTCTGTGCGCTCTTGCCTGAGGACCTACG  
 CTTCTGGCTCAGAGTTCTATGCTGCCATCTCAAAAAGTTGGATTTGAGTGGCAACGACCTGTGAGGC  
 AACCAAGTTGACACCTTCAGGGTCTGCTGCAGGAGTACCACCACTGCTGCATCTTGTGAGTACTG  
 AGTCCAGCTTGTGATGCCAGCTGTTGGTACCCTGCCACCCTCACTCGATGTGAGTCTCCGCTA  
 CCTTGGTCTCTATGGCAACCTTTGTCTATGGCAGGACTTAAAGAAGTCTTCGGGACTCTGTGGTACAG  
 GCTGAGCTACGTACCGTGTACACCCCTCCCTGTGGACTGCTATGAGGGTCTTCTTGGCCACCACCTG  
 CCTCTGCTCTTGAAGCCTCCATCAATGAGGAGAAGTTGCCCGGGTGAAGCTGAGTTACACCAACT  
 GCTGTTAGCTTCGGGCCGTGCCATGTCTCTGGACCACAGACATCTATGGCCGGCTAGCTGCAGACTAT  
 TTTAGCCTC

AGCGGACCGACGCGTACGCGGCCGCTCGAG – GFP Tag – GTTTAA

**Protein Sequence:**

>MG207908 representing NM\_145471  
 Red=Cloning site Green=Tags(s)

MHTLVFLSTRQVLQCQPAACQALPLLPRELFPLLFKVAFMDKKTLLVRELVHTWPFLLSFQQLLQECAH  
 CSRALLQERLSTESMQAVILGLTARIHTQETEAGTQPLCRKHALRVLDMTGLLDDGVEQDPETMSMWDCT  
 AAVARTCIAQQGGTAEPGLSPVPVEIRVDLRVNRASYTFLREALQSSVASPLRLCCRDRAEDLPMRNT  
 VALLQLLDAGCLRRIDLRFNGLRGLSVIIPHVARFQHLASRLHYVHGDSRQPSVDGEDNFRYFLAQM  
 GRFMCLRELSMGSSLLSGRLDQLLSTLQRPLESLELAFCALLPEDLRFQAQSSHAHLKLLDLSGNDL SG  
 NQLTPFQGLLQAVATLLHLELQTEQLADALQLLATLPTLTRCASLRYLGLYGNPLSMAGLKELLRDSVVQ  
 AELRTVVHPPVDCYEGLPWPPASVLLLEASINEEK FARVEAELHQLLLASGRAHVLWTTDIYGRLAADY  
 FSL

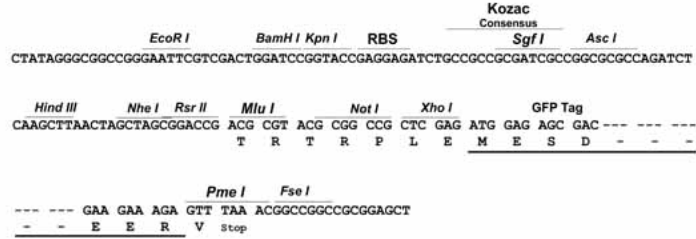
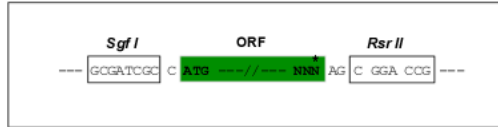
SGPTRRRLE – GFP Tag – V

**Restriction Sites:**

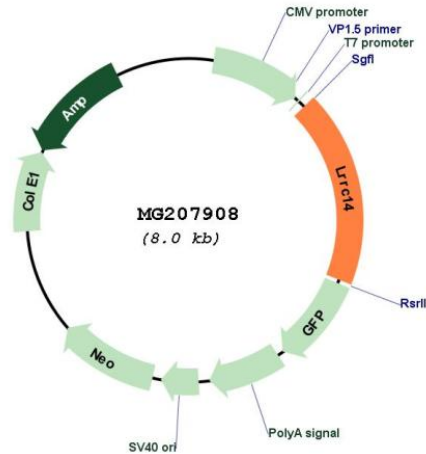
Sgfl-RsrII

Cloning Scheme:

Cloning sites used for ORF Shuttling:



Plasmid Map:



ACCN: NM\_145471

ORF Size: 1479 bp

OTI Disclaimer: The molecular sequence of this clone aligns with the gene accession number as a point of reference only. However, individual transcript sequences of the same gene can differ through naturally occurring variations (e.g. polymorphisms), each with its own valid existence. This clone is substantially in agreement with the reference, but a complete review of all prevailing variants is recommended prior to use. [More info](#)

OTI Annotation: This clone was engineered to express the complete ORF with an expression tag. Expression varies depending on the nature of the gene.

Components: The ORF clone is ion-exchange column purified and shipped in a 2D barcoded Matrix tube containing 10ug of transfection-ready, dried plasmid DNA (reconstitute with 100 ul of water).

**Reconstitution Method:**

1. Centrifuge at 5,000xg for 5min.
2. Carefully open the tube and add 100ul of sterile water to dissolve the DNA.
3. Close the tube and incubate for 10 minutes at room temperature.
4. Briefly vortex the tube and then do a quick spin (less than 5000xg) to concentrate the liquid at the bottom.
5. Store the suspended plasmid at -20°C. The DNA is stable for at least one year from date of shipping when stored at -20°C.

**RefSeq:** [NM\\_145471.1](#)

**RefSeq Size:** 2277 bp

**RefSeq ORF:** 1482 bp

**Locus ID:** 223664

**UniProt ID:** [Q8VC16](#)

**Cytogenetics:** 15 D3

**Gene Summary:** Negatively regulates Toll-like receptor-mediated NF-kappa-B signaling by disrupting IKK core complex formation through interaction with IKBKB.[UniProtKB/Swiss-Prot Function]