

## Product datasheet for **MG204615**

### Sox2 (NM\_011443) Mouse Tagged ORF Clone

#### Product data:

**Product Type:** Expression Plasmids  
**Product Name:** Sox2 (NM\_011443) Mouse Tagged ORF Clone  
**Tag:** TurboGFP  
**Symbol:** Sox2  
**Synonyms:** lc; lcc; Sox; Sox-2; ys; ysb  
**Mammalian Cell Selection:** Neomycin  
**Vector:** pCMV6-AC-GFP (PS100010)  
**E. coli Selection:** Ampicillin (100 ug/mL)  
**ORF Nucleotide Sequence:** >MG204615 representing NM\_011443  
 Red=Cloning site Blue=ORF Green=Tags(s)

TTTTGTAATACGACTCACTATAGGGCGGCCGGAATTCGTCGACTGGATCCGGTACCGAGGAGATCTGCC  
 GCC**CGATCGCC**

ATGTATAACATGATGGAGACGGAGCTGAAGCCCGGGCCCGCAGCAAGCTTCGGGGGGCGGCGGGAG  
 GAGGCAACGCCACGGCGGCGGACCGGCGCAACCAGAAGAACAGCCCGGACCGCGTCAAGAGGCCAT  
 GAACGCCTTCATGGTATGGTCCCGGGGCGAGCGCGTAAGATGGCCAGGAGAACCCTAAGATGCACAAC  
 TCGGAGATCAGCAAGCGCTGGGCGGGAGTGGAACTTTGTCCGAGACCGAGAAGCGGCCGTTTCATCG  
 ACGAGGCAAGCGGCTGCGCGCTCTGCACATGAAGGAGCACCCGGATTATAAATACCGGCCGCGGGGAA  
 AACCAAGACGCTCATGAAGAAGGATAAGTACACGCTTCCCGGAGGCTTGCTGGCCCCGCGGGAACAGC  
 ATGGCGAGCGGGTTGGGTGGGCGCCGCGCTGGGTGCGGGCGTGAACCAGCGCATGGACAGCTACGCGC  
 ACATGAACGGCTGGAGCAACGGCAGCTACAGCATGATGCAGGAGCAGCTGGGCTACCCGCAGCACCCGGG  
 CCTCAACGCTCACGGCGCGGCACAGATGCAACCGATGCACCGCTACGACGTACGCGCCCTGCAGTACAAC  
 TCCATGACCAGCTCGCAGACCTACATGAACGGCTCGCCACCTACAGCATGTCTACTCGCAGCAGGGCA  
 CCCCCGTATGGCGCTGGGCTCCATGGGCTCTGTGGTCAAGTCCGAGGCCAGCTCCAGCCCCCGTGGT  
 TACCTCTTCTCCCACTCCAGGGCGCCCTGCCAGGCCGGGACCTCCGGGACATGATCAGCATGTACCTC  
 CCCGGCGCGAGGTGCCGAGCCCGCTGCGCCAGTAGACTGCACATGGCCAGCACTACCAGAGCGGCC  
 CGGTGCCCGGCACGGCCATTAACGGCACACTGCCCTGTCCGACATG

**ACGCGT**ACGCGGCCGCTCGAG - GFP Tag - GTTTAA



[View online »](#)

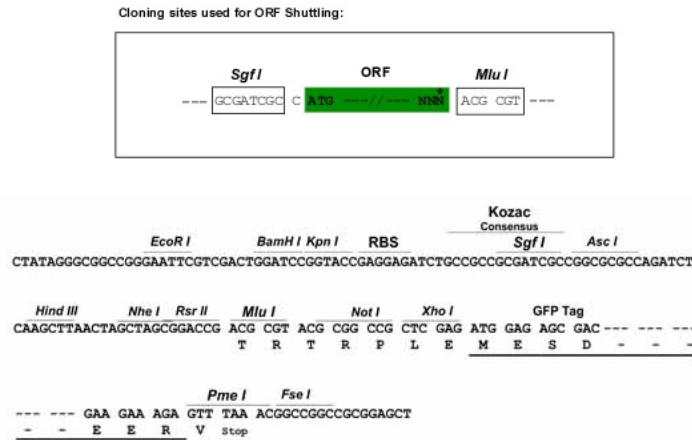
**Protein Sequence:** >MG204615 representing NM\_011443  
 Red=Cloning site Green=Tags(s)

MYNMMETELKPPGPQQASGGGGGGGNATAAATGGNQKNSPDRVKRPMNAFMVWSRQRRKMAQENPKMHN  
 SEISKRLGAEWKLLSETEKRPFIDEAKRLRALHMKEHPDYKYRPRRKTTLMKKDKYTLPGLLAPGGNS  
 MASGVGVGAGLGAGVNRMDSYAHMNGWSNGSYSMMQEQLGYPQHPGLNAHGAAQMOPMHRVDVSALQYN  
 SMTSSQTYMNGSPTYSMSYSQQGTPGMALGSMGSVVKSEASSPPVVTSSSHSRAPCQAGDLRDMISMYL  
 PGAEVPEPAAPSRLHMAQHYQSGPVPGTAINGTLPLSHM

TRTRPLE - GFP Tag - V

**Restriction Sites:** SgfI-MluI

**Cloning Scheme:**



**ACCN:** NM\_011443

**ORF Size:** 957 bp

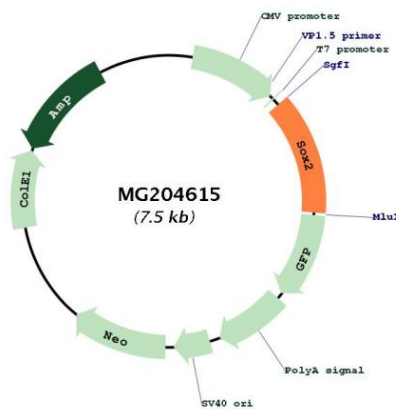
**OTI Disclaimer:** Due to the inherent nature of this plasmid, standard methods to replicate additional amounts of DNA in E. coli are highly likely to result in mutations and/or rearrangements. Therefore, OriGene does not guarantee the capability to replicate this plasmid DNA. Additional amounts of DNA can be purchased from OriGene with batch-specific, full-sequence verification at a reduced cost. Please contact our customer care team at [custsupport@origene.com](mailto:custsupport@origene.com) or by calling 301.340.3188 option 3 for pricing and delivery.

The molecular sequence of this clone aligns with the gene accession number as a point of reference only. However, individual transcript sequences of the same gene can differ through naturally occurring variations (e.g. polymorphisms), each with its own valid existence. This clone is substantially in agreement with the reference, but a complete review of all prevailing variants is recommended prior to use. [More info](#)

**OTI Annotation:** This clone was engineered to express the complete ORF with an expression tag. Expression varies depending on the nature of the gene.

<b>Components:</b>	The ORF clone is ion-exchange column purified and shipped in a 2D barcoded Matrix tube containing 10ug of transfection-ready, dried plasmid DNA (reconstitute with 100 ul of water).
<b>Reconstitution Method:</b>	<ol style="list-style-type: none"> <li>1. Centrifuge at 5,000xg for 5min.</li> <li>2. Carefully open the tube and add 100ul of sterile water to dissolve the DNA.</li> <li>3. Close the tube and incubate for 10 minutes at room temperature.</li> <li>4. Briefly vortex the tube and then do a quick spin (less than 5000xg) to concentrate the liquid at the bottom.</li> <li>5. Store the suspended plasmid at -20°C. The DNA is stable for at least one year from date of shipping when stored at -20°C.</li> </ol>
<b>RefSeq:</b>	<u><a href="#">NM_011443.4</a></u>
<b>RefSeq Size:</b>	2457 bp
<b>RefSeq ORF:</b>	960 bp
<b>Locus ID:</b>	20674
<b>UniProt ID:</b>	<u><a href="#">P48432</a></u>
<b>Cytogenetics:</b>	3 16.93 cM
<b>Gene Summary:</b>	This intronless gene encodes a member of the SRY-related HMG-box (SOX) family of transcription factors involved in the regulation of embryonic development and in the determination of cell fate. The product of this gene is required for stem-cell maintenance in the central nervous system, and also regulates gene expression in the stomach. Mutations in a similar gene in human have been associated with optic nerve hypoplasia and with syndromic microphthalmia, a severe form of structural eye malformation. This gene lies within an intron of another gene called SOX2 overlapping transcript (Sox2ot). [provided by RefSeq, Sep 2015]

**Product images:**



Circular map for MG204615