

## Product datasheet for **MG203888**

### Rnaseh1 (NM\_011275) Mouse Tagged ORF Clone

#### Product data:

**Product Type:** Expression Plasmids  
**Product Name:** Rnaseh1 (NM\_011275) Mouse Tagged ORF Clone  
**Tag:** TurboGFP  
**Symbol:** Rnaseh1  
**Mammalian Cell Selection:** Neomycin  
**Vector:** pCMV6-AC-GFP (PS100010)  
**E. coli Selection:** Ampicillin (100 ug/mL)  
**ORF Nucleotide Sequence:** >MG203888 representing NM\_011275  
Red=Cloning site Blue=ORF Green=Tags(s)

TTTTGTAATACGACTCACTATAGGGCGGCCGGAATTCGTCGACTGGATCCGGTACCGAGGAGATCTGCC  
GCC**CGATCGCC**

ATGCGCTGGCTGCTGCCGCTGTCCCGCACAGTGACACTGGCCGTCGTACGCCTGAGGCGAGGCATTTGCC  
GGCTCGGGATGTTCTATGCGGTGAGGAGAGGCCCGAGGACCGGAGTCTTCCTGAGTTGGAGTGAGTGCAA  
AGCCCAGGTGGACCGGTTTCTGCTGCCAGGTTTAAGAAATTTGCCACAGAAGATGAGGCCTGGGCCTTT  
GTCAGGAGCTCTCAAGCCCGGATGGTTCAAAGGGCAGGAAAGTGCACATGAGCAGAAGTCACAGGTGA  
AGACCAGCAAGCGGCTCGGGAGCCCTGGGTGAAGGGGAAGAAGTCCAGAGCCAGGGCCAAAGCACAC  
ACGACAGGACACCGAGCCGCTGTAGTGAGCAAGGACACGTTTTCTTATATGGGAGAGTCAGTCATT  
GTCTACACGGATGGCTGTTGCTCCAGTAATGGACGGAAGCGGGCACGAGCAGGAATTGGCGTTTACTGGG  
GCCAGGCCACCCCTTAATGTAGGTATAAGGCTTCTGGGCGACAGACAAACCAGAGGGCCGAGATCCA  
TGCAGCCTGCAAGGCCATCATGCAAGCCAAGGCTCAGAACATCAGCAAGCTGGTTCTGTACACAGACAGC  
ATGTTCCACATCAATGGGATAACTAAGGTTTCAAGGCTGGAAGAAGAATGGCTGGAGAACAAGTACAG  
GGAAAGATGTGATCAACAAGGAGGACTTATGGAGCTGGACGAGCTCACTCAGGGCATGGACATCCAATG  
GATGCACATTCTGGTCACTCAGGATTTGTGGCAATGAAGAGGCCGACAGACTGGCACGGGAAGGAGCG  
AAGCAGTCTGAGGAC

**ACGCGT**ACGCGGCCGCTCGAG - GFP Tag - GTTTAA



[View online »](#)

**Protein Sequence:** >MG203888 representing NM\_011275  
Red=Cloning site Green=Tags(s)

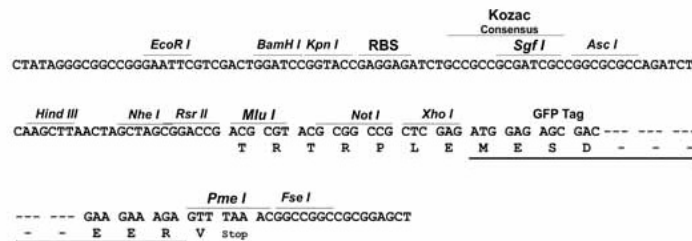
MRWLLPLSRTVTLAVVRLRRGICGLGMFYAVRRGRRTGVFLSWSECKAQVDRFPAARFKKFATEDEAWAF  
 VRSSSSPDGSKGQESAHEQKSQVKTSKRPREPLGEGEELPEPGPKHTRQDTEPAAVVSKDTFSYMGESVI  
 VYTDGCCSSNGRKRARAGIGVYWGPGHPLNVGIRLPGRQTNQRAEIIHAACKAIMQAKAQNI SKLVLYTDS  
 MFTINGITNWVQGWKKNWRTSTGKDVINKEDFMELDEL TQGMDIQWMHIPGHSGFVGNEEADRLAREGA  
 KQSED

TRTRPLE - GFP Tag - V

**Restriction Sites:** SgfI-MluI

**Cloning Scheme:**

Cloning sites used for ORF Shuttling:



**ACCN:** NM\_011275

**ORF Size:** 855 bp

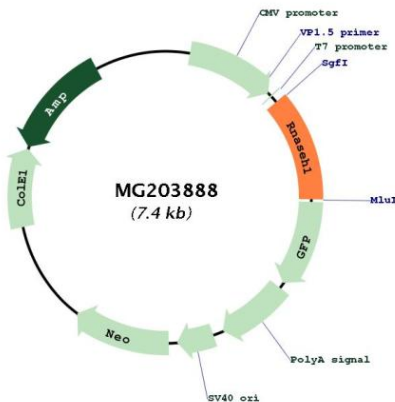
**OTI Disclaimer:** Due to the inherent nature of this plasmid, standard methods to replicate additional amounts of DNA in *E. coli* are highly likely to result in mutations and/or rearrangements. Therefore, OriGene does not guarantee the capability to replicate this plasmid DNA. Additional amounts of DNA can be purchased from OriGene with batch-specific, full-sequence verification at a reduced cost. Please contact our customer care team at [custsupport@origene.com](mailto:custsupport@origene.com) or by calling 301.340.3188 option 3 for pricing and delivery.

The molecular sequence of this clone aligns with the gene accession number as a point of reference only. However, individual transcript sequences of the same gene can differ through naturally occurring variations (e.g. polymorphisms), each with its own valid existence. This clone is substantially in agreement with the reference, but a complete review of all prevailing variants is recommended prior to use. [More info](#)

**OTI Annotation:** This clone was engineered to express the complete ORF with an expression tag. Expression varies depending on the nature of the gene.

<b>Components:</b>	The ORF clone is ion-exchange column purified and shipped in a 2D barcoded Matrix tube containing 10ug of transfection-ready, dried plasmid DNA (reconstitute with 100 ul of water).
<b>Reconstitution Method:</b>	<ol style="list-style-type: none"> <li>1. Centrifuge at 5,000xg for 5min.</li> <li>2. Carefully open the tube and add 100ul of sterile water to dissolve the DNA.</li> <li>3. Close the tube and incubate for 10 minutes at room temperature.</li> <li>4. Briefly vortex the tube and then do a quick spin (less than 5000xg) to concentrate the liquid at the bottom.</li> <li>5. Store the suspended plasmid at -20°C. The DNA is stable for at least one year from date of shipping when stored at -20°C.</li> </ol>
<b>RefSeq:</b>	<u>NM_011275.1, NP_035405.1</u>
<b>RefSeq Size:</b>	1430 bp
<b>RefSeq ORF:</b>	858 bp
<b>Locus ID:</b>	19819
<b>Cytogenetics:</b>	12 A2
<b>Gene Summary:</b>	This gene encodes an endonuclease that specifically degrades the RNA of RNA-DNA hybrids and is necessary for DNA replication and repair. This enzyme is present in both mitochondria and nuclei, which are resulted from translation of a single mRNA with two in-frame initiation start codons. The use of the first start codon produces the mitochondrial isoform and the use of the second start codon produces the nuclear isoform. The production of the mitochondrial isoform is modulated by an upstream open reading frame (uORF) which encodes 7aa in mouse. An alternately spliced transcript variant has been found which is a candidate for nonsense-mediated mRNA decay (NMD). [provided by RefSeq, Nov 2013]

**Product images:**



Circular map for MG203888