

Product datasheet for **MG203068**

Eif6 (NM_010579) Mouse Tagged ORF Clone

Product data:

Product Type:	Expression Plasmids
Product Name:	Eif6 (NM_010579) Mouse Tagged ORF Clone
Tag:	TurboGFP
Symbol:	Eif6
Synonyms:	1110004P11; AA408895; CAB; eIF; eIF-6; imc-41; imc-415; Itgb4; Itgb4bp; p27(BBP); p27B; p27BBP
Mammalian Cell Selection:	Neomycin
Vector:	pCMV6-AC-GFP (PS100010)
E. coli Selection:	Ampicillin (100 ug/mL)
ORF Nucleotide Sequence:	>MG203068 representing NM_010579 Red=Cloning site Blue=ORF Green=Tags(s)

TTTTGTAATACGACTCACTATAGGGCGGCCGGAATTCGTCGACTGGATCCGGTACCGAGGAGATCTGCC
GCC**GCGATCGCC**

ATGGCGGTCAGAGCGTCGTTTCGAGAACAACACTGTGAGGTCGGTTGTTTTGCCAAACTCACAAACGCCTACT
GCCTGGTGGCCATCGGAGGCTCAGAGAACTTCTACAGTGTGTTTCGAGGGTGAAGCTCTCCGATGCCATTCC
CGTGGTGCACGCATCCATCGCCGGCTGCCGAATCATCGGGCGCATGTGTGTGGGAACAGGCATGGGCTC
CTGGTACCCAACAACACCACCGACCAGGAGCTGCAGCACATCCGCAACAGCCTGCCTGACTCCGTGCAGA
TACGGCGGGTGGAGGAGCGGCTCTCGGCCCTTGGCAATGTCACCACCTGCAATGACTATGTGCCTTGGT
CCACCCAGACTTGGACAGGGAGACAGAAGAGATCCTGGCTGATGTCTCAAGGTGGAAGTCTTCAGACAG
ACAGTTGCTGACCAGGTGCTAGTAGGAAGCTACTGTGTCTTCAGTAATCAGGGGGGGCTGGTGCACCTA
AAACTTCTATCGAGGACCAGGATGAGTTGCTCCCTTCTCAAGTCCCCCTTGTGGCAGGCACTGTGAA
CCGAGGGAGTGAGGTGATTGCTGCTGGGATGGTGGTGAACGATTGGTGTGCTTTCTGTGGTCTGGACAG
ACCAGCACGGAGCTGTCAGTGGTGGAGAGCGTCTTCAAGCTGAATGAAGCCAAGCCAAGTACCATTGCCA
CCAGCATGCGGGATTCCCTCATTGACAGCCTCACA

ACGCGTACGCGGGCGCTCGAG - GFP Tag - GTTTAA



[View online »](#)

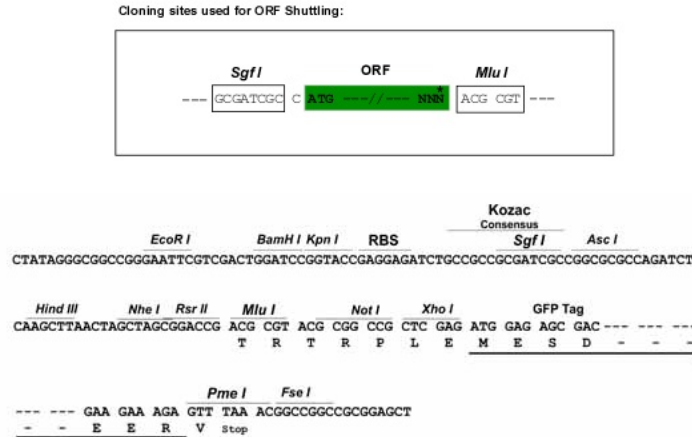
Protein Sequence: >MG203068 representing NM_010579
 Red=Cloning site Green=Tags(s)

MAVRASFENNCEVGCFAKL TNAYCLVAIGGSENFYSVFEGELSDAIPVVHASIAGCRIIGRMVGNRHGL
 LVPNNTDQELQHIRNSLPDSVQIRRV EERLSALGNVTT CNDYVALVHPDL DRETEEILADVLKVEVFRQ
 TVADQVLVGSYCVFSNQGLVHPKTSIEDQDELSSLLQVPLVAGTVNRGSEVIAAGMVVNDWCAFCGLDT
 TSTELSVVESVFKLNEAKPSTIATSMRDSLIDSLT

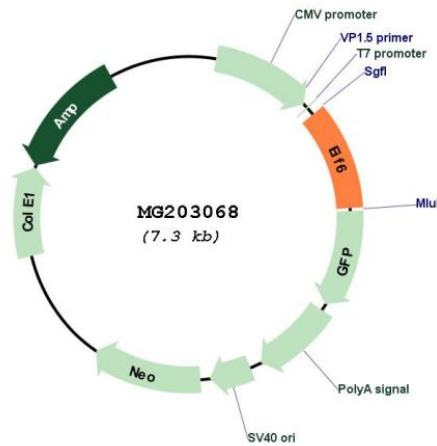
TRTRPLE - GFP Tag - V

Restriction Sites: SgfI-MluI

Cloning Scheme:



Plasmid Map:



ACCN: NM_010579

ORF Size: 735 bp

OTI Disclaimer:	The molecular sequence of this clone aligns with the gene accession number as a point of reference only. However, individual transcript sequences of the same gene can differ through naturally occurring variations (e.g. polymorphisms), each with its own valid existence. This clone is substantially in agreement with the reference, but a complete review of all prevailing variants is recommended prior to use. More info
OTI Annotation:	This clone was engineered to express the complete ORF with an expression tag. Expression varies depending on the nature of the gene.
Components:	The ORF clone is ion-exchange column purified and shipped in a 2D barcoded Matrix tube containing 10ug of transfection-ready, dried plasmid DNA (reconstitute with 100 ul of water).
Reconstitution Method:	<ol style="list-style-type: none">1. Centrifuge at 5,000xg for 5min.2. Carefully open the tube and add 100ul of sterile water to dissolve the DNA.3. Close the tube and incubate for 10 minutes at room temperature.4. Briefly vortex the tube and then do a quick spin (less than 5000xg) to concentrate the liquid at the bottom.5. Store the suspended plasmid at -20°C. The DNA is stable for at least one year from date of shipping when stored at -20°C.
RefSeq:	NM_010579.1
RefSeq Size:	1495 bp
RefSeq ORF:	738 bp
Locus ID:	16418
UniProt ID:	O55135
Cytogenetics:	2 H1
Gene Summary:	The protein encoded by this gene is a eukaryotic translation initiation factor that regulates both ribosome biogenesis and translation, which are rate-limiting factors for cell growth. The encoded protein binds 60S ribosomes and prevents their association with 40S ribosomes. This gene may play a role in oncogenesis as well. [provided by RefSeq, Aug 2015]