

Product datasheet for **MG201412**

Cdkn2a (BC058190) Mouse Tagged ORF Clone

Product data:

Product Type: Expression Plasmids
Product Name: Cdkn2a (BC058190) Mouse Tagged ORF Clone
Tag: TurboGFP
Symbol: Cdkn2a
Synonyms: p16, MTS1, p16INK4a, INK4a-ARF, p19ARF, ARF-INK4a, Arf, p16(INK4a)
Mammalian Cell Selection: Neomycin
Vector: pCMV6-AC-GFP (PS100010)
E. coli Selection: Ampicillin (100 ug/mL)
ORF Nucleotide Sequence: >MG201412 representing BC058190
 Red=Cloning site Blue=ORF Green=Tags(s)

TTTTGTAATACGACTCACTATAGGGCGGCCGGAATTCGTCGACTGGATCCGGTACCGAGGAGATCTGCC
 GCC**CGATCGCC**

ATGGGTCGCAGGTTCTTGGTCACTGTGAGGATTCAGCGCGGGCCGCCACTCCAAGAGAGGGTTTTCT
 TGGTGAAGTTCGTGCGATCCCGGAGACCCAGGACAGCGAGCTGCGCTCTGGCTTTCGTGAACATGTTGTT
 GAGGCTAGAGAGGATCTTGAGAAGAGGGCCGCACCGGAATCCTGGACCAGGTGATGATGATGGGCAACGT
 TCACGTAGCAGCTCTTCTGCTCAACTACGGTGCAGATTCGAACTGCGAGGACCCACTACCTTCTCCCGC
 CCGGTGCACGACGACGCGCGGAAGGCTTCTTGACACGCTGGTGGTGTGCACGGGTGAGGGGCTCGGC
 TGGATGTGCGCGATGCCTGGGGTCGCCTGCCGCTCGACTTGCCCAAGAGCGGGGACATCAAGACATCGT
 GCGATATTTGCGTTCGCTGGGTGCTCTTTGTGTTCCGCTGGGTGGTCTTTGTGTACCGCTGGGAACGTC
 GCCAGACCGACGGGCA

ACGCGTACGCGGCCGCTCGAG - GFP Tag - GTTTAA

Protein Sequence: >MG201412 representing BC058190
 Red=Cloning site Green=Tags(s)

MGRFLVTVRIQRAGRPLQERVFLVKFVRSRRPRTASCALAFVNMLLRRLERILRRGPHRNP GPGDDDGQR
 SRSSSSAQLRCRFELRGPHYLLPPGARRSAGRLPGHAGGAARVRSAGCARCLGSPAARLGPRAGTSRHR
 AIFAFRWVLFVFRWVVFYRWERRPDRRA

TRTRPLE - GFP Tag - V

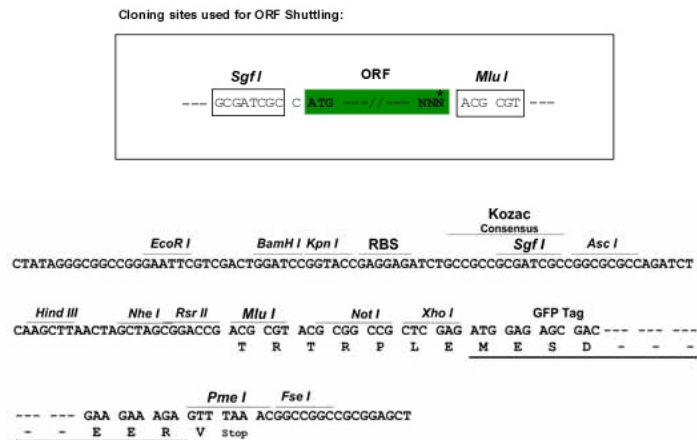
Chromatograms: https://cdn.origene.com/chromatograms/ja1889_e09.zip



[View online »](#)

Restriction Sites: SgfI-MluI

Cloning Scheme:



ACCN: BC058190

ORF Size: 507 bp

OTI Disclaimer: Due to the inherent nature of this plasmid, standard methods to replicate additional amounts of DNA in E. coli are highly likely to result in mutations and/or rearrangements. Therefore, OriGene does not guarantee the capability to replicate this plasmid DNA. Additional amounts of DNA can be purchased from OriGene with batch-specific, full-sequence verification at a reduced cost. Please contact our customer care team at custsupport@origene.com or by calling 301.340.3188 option 3 for pricing and delivery.

The molecular sequence of this clone aligns with the gene accession number as a point of reference only. However, individual transcript sequences of the same gene can differ through naturally occurring variations (e.g. polymorphisms), each with its own valid existence. This clone is substantially in agreement with the reference, but a complete review of all prevailing variants is recommended prior to use. [More info](#)

OTI Annotation: This clone was engineered to express the complete ORF with an expression tag. Expression varies depending on the nature of the gene.

Components: The ORF clone is ion-exchange column purified and shipped in a 2D barcoded Matrix tube containing 10ug of transfection-ready, dried plasmid DNA (reconstitute with 100 ul of water).

Reconstitution Method:

1. Centrifuge at 5,000xg for 5min.
2. Carefully open the tube and add 100ul of sterile water to dissolve the DNA.
3. Close the tube and incubate for 10 minutes at room temperature.
4. Briefly vortex the tube and then do a quick spin (less than 5000xg) to concentrate the liquid at the bottom.
5. Store the suspended plasmid at -20°C. The DNA is stable for at least one year from date of shipping when stored at -20°C.

RefSeq: [BC058190](#), [AAH58190](#)

RefSeq Size: 783 bp

RefSeq ORF: 509 bp

Locus ID: 12578

Cytogenetics: 4 42.15 cM

Gene Summary: Acts as a negative regulator of the proliferation of normal cells by interacting strongly with CDK4 and CDK6. This inhibits their ability to interact with cyclins D and to phosphorylate the retinoblastoma protein.[UniProtKB/Swiss-Prot Function]

Product images:



Circular map for MG201412