

## Product datasheet for **DM127P**

### Cytokeratin 17 (KRT17) Mouse Monoclonal Antibody [Clone ID: Ks17.E3]

#### Product data:

Product Type:	Primary Antibodies
Clone Name:	Ks17.E3
Applications:	FC, IF, IHC, WB
Recommended Dilution:	<b>Immunoblotting:</b> 1/100-1/1000. <b>Immunocytochemistry.</b> <b>Immunohistochemistry on Frozen and Paraffin Embedded tissues:</b> 1/25-1/200 for immunohistochemistry with avidin-biotinylated horseradish peroxidase complex (ABC) as detection reagent. <b>Flow Cytometry:</b> 1/25-1/200.
Reactivity:	Human, Rat
Host:	Mouse
Isotype:	IgG2b
Clonality:	Monoclonal
Immunogen:	A cytoskeletal preparation from Rat colon.
Specificity:	Clone E3 reacts with Cytokeratin 17 in basal layers of pseudo-stratified and transitional epithelia.
Formulation:	PBS State: Purified State: Liquid purified IgG fraction Preservative: 0.09% Sodium Azide
Concentration:	lot specific
Conjugation:	Unconjugated
Storage:	Store undiluted at 2-8°C for one month or (in aliquots) at -20°C for longer. Avoid repeated freezing and thawing.
Stability:	Shelf life: one year from despatch.
Predicted Protein Size:	46 kDa
Gene Name:	keratin 17



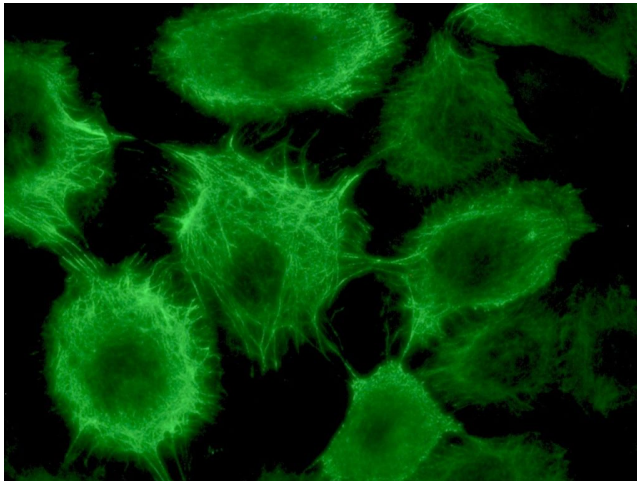
[View online »](#)

**Database Link:** [Entrez Gene 3872 Human Q04695](#)

**Background:** Cytokeratins are a subfamily of intermediate filament proteins and are characterized by a remarkable biochemical diversity, represented in human epithelial tissues by at least 20 different polypeptides. They range in molecular weight between 40 kDa and 68 kDa and isoelectric pH between 4.9 - 7.8. The individual human cytokeratins are numbered 1 to 20. The various epithelia in the human body usually express cytokeratins which are not only characteristic of the type of epithelium, but also related to the degree of maturation or differentiation within an epithelium. Cytokeratin subtype expression patterns are used to an increasing extent in the distinction of different types of epithelial malignancies. The cytokeratin antibodies are not only of assistance in the differential diagnosis of tumors using immuno-histochemistry on tissue sections, but are also a useful tool in cytopathology and flow cytometric assays.

**Synonyms:** Cytokeratin-17, Keratin-17, Keratin 17, KRT17, CK17, K17

**Product images:**



Cytokeratin 17 filament immunostaining in a HaCaT keratinocyte cell culture with DM127P at a dilution of 1:500 (ice-cold methanol fixation).