

Product datasheet for CS805047

Tissue FFPE Sections, Lung

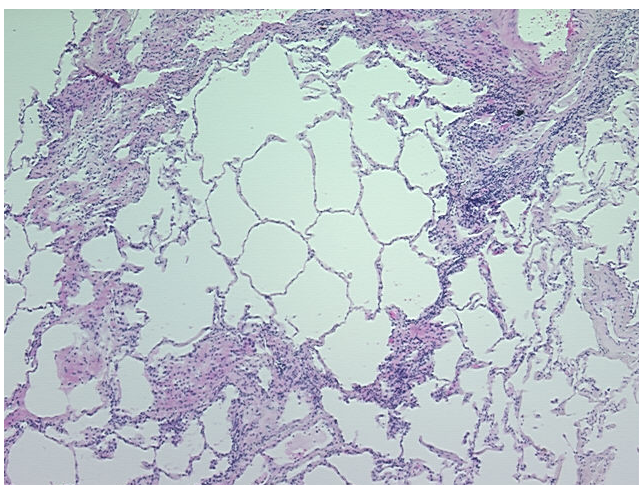
Product data:

Product Type:	FFPE Sections
Disease State:	Normal
Diagnosis Category:	Normal
Tissue:	Lung
Frozen Sample ID:	PA00003C11
Case ID:	CU0000005343
Tissue of Origin:	Lung
Site of Finding:	Lung
Appearance:	R
Sample Diagnosis (from Pathology Verification):	Within normal limits
Normal:	100%
Lesional:	0%
Tumor:	0%
Tumor Hypo/Acellular Stroma:	0%
Tumor Hypercellular Stroma:	0%
Necrosis:	0%
Pathology Verification notes from H&E review:	Non Tumor Structures: 40% Alveoli, 20% Bronchioles, 40% Fibrovascular septa
CASE Diagnosis (from medical center path report):	Carcinoma of lung, sarcomatoid
Age:	61
Gender:	Female
Tumor Grade:	AJCC G4: Undifferentiated

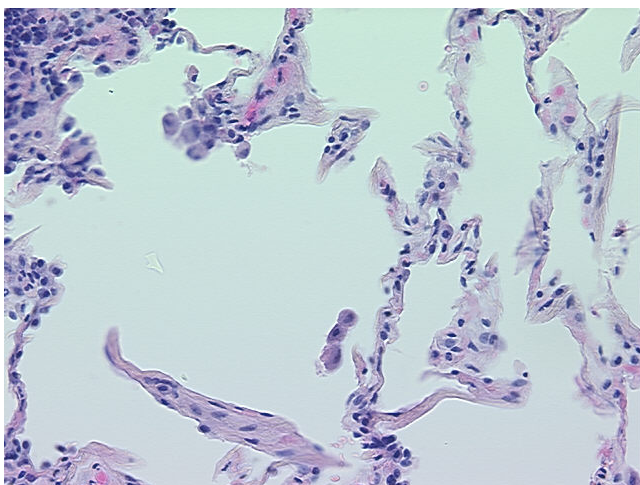


[View online »](#)

Minimum Stage Grouping:	IB
T (Extent of Primary Tumor):	T2
N (Lymph node metastasis):	N0
M (Distant metastasis):	MX
Diagnostic Test Results:	CD227 ~ MUC1 ~ EMA ~ CA15-3 ! by IHC,Positive, weak; Cytokeratin (Pan) ~ Keratin, Pan ! by IHC,Positive, weak; MART-1 ~ Melanoma Marker ~ Melan-A,Negative; Vimentin ~ VIM ! by IHC,Positive, weak; HMB45 melanoma antigen ~ GP100 ! by IHC,Neg
Storage:	Store FFPE tissue sections at +4°C.
Stability:	All FFPE tissue sections are stable for 1 year from date of purchase.

Product images:

4x Image



20x Image