

## Product datasheet for **CS800538**

### Tissue FFPE Sections, Kidney

#### Product data:

|   |   |
|---|---|
| Product Type:                                     | FFPE Sections                               |
| Disease State:                                    | Cancer                                      |
| Diagnosis Category:                               | Renal Cell Carcinoma                        |
| Tissue:   | Kidney                                      |
| Frozen Sample ID:                                 | PA00001103                                  |
| Case ID:  | CU0000000461                                |
| Tissue of Origin:                                 | Kidney                                      |
| Site of Finding:                                  | Kidney                                      |
| Appearance:                                       | T   |
| Sample Diagnosis (from Pathology Verification):   | Carcinoma of kidney, renal cell, clear cell |
| Normal:   | 0%  |
| Lesional:   | 0%  |
| Tumor:  | 90%   |
| Tumor Hypo/Acellular Stroma:                      | 5%  |
| Tumor Hypercellular Stroma:                       | 5%  |
| Necrosis:   | 0%  |
| CASE Diagnosis (from medical center path report): | Carcinoma of kidney, renal cell, clear cell |
| Age:  | 76  |
| Gender:   | Female                                      |
| Tumor Grade:                                      | Fuhrman G3: Nuclei very irregular           |
| Minimum Stage Grouping:                           | III   |



[View online »](#)

T (Extent of Primary Tumor): T2

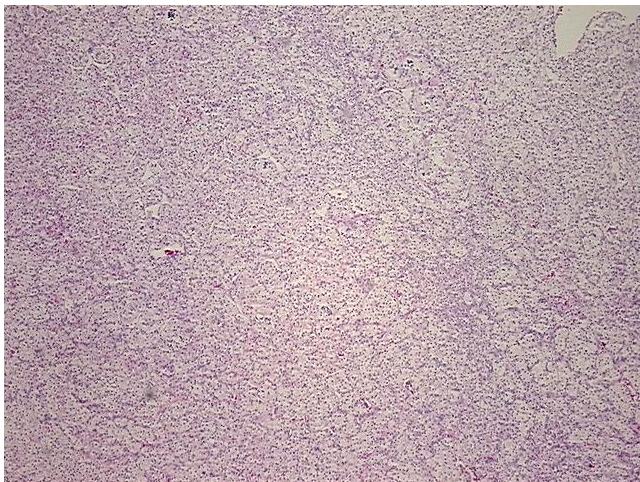
N (Lymph node metastasis): N1

M (Distant metastasis): MX

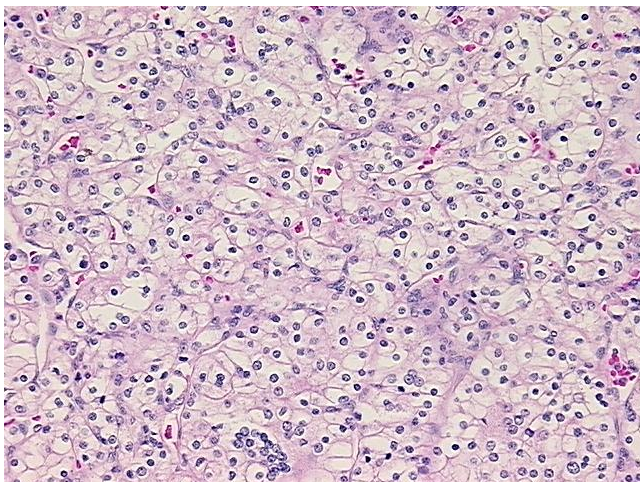
Storage: Store FFPE tissue sections at +4°C.

Stability: All FFPE tissue sections are stable for 1 year from date of purchase.

### Product images:



4x Image



20x Image