

Product datasheet for **CS715150**

Tissue FFPE Sections, Endometrium

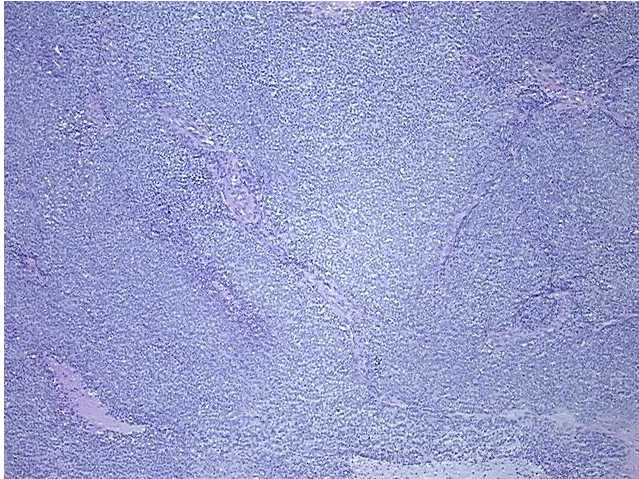
Product data:

Product Type:	FFPE Sections
Disease State:	Cancer
Diagnosis Category:	Endometrial Cancer
Tissue:	Endometrium
Frozen Sample ID:	PA0000B450
Case ID:	CI0000019890
Tissue of Origin:	Endometrium
Site of Finding:	Endometrium
Appearance:	T
Sample Diagnosis (from Pathology Verification):	Carcinoma of endometrium
Normal:	0%
Lesional:	0%
Tumor:	65%
Tumor Hypo/Acellular Stroma:	15%
Tumor Hypercellular Stroma:	10%
Necrosis:	10%
Pathology Verification notes from H&E review:	Tumor Stroma (Cellular): Desmoplastic reaction, Inflammatory cells; Tumor Stroma (Hypo/Acellular): Fibrosis; Inflammation: Mild Mixed inflammatory infiltrate; Other Features/Comments: Tumor area: 18 mm x 3 mm
Age:	54
Gender:	Female
Race:	Black or African American
Storage:	Store FFPE tissue sections at +4°C.
Stability:	All FFPE tissue sections are stable for 1 year from date of purchase.

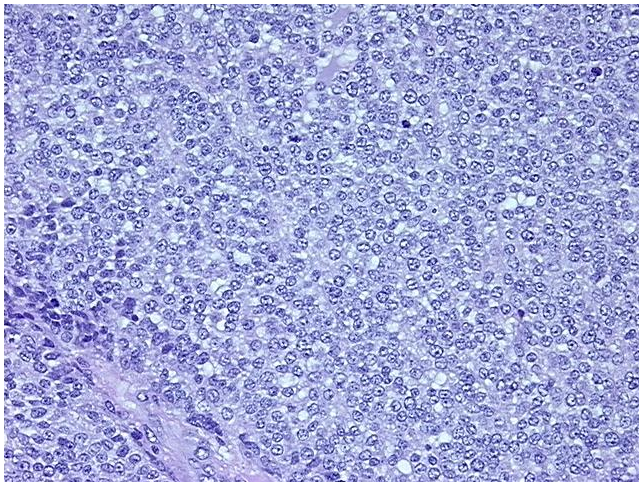


[View online »](#)

Product images:



4x Image



20x Image