

## Product datasheet for **CS714218**

### Tissue FFPE Sections, Colon: left

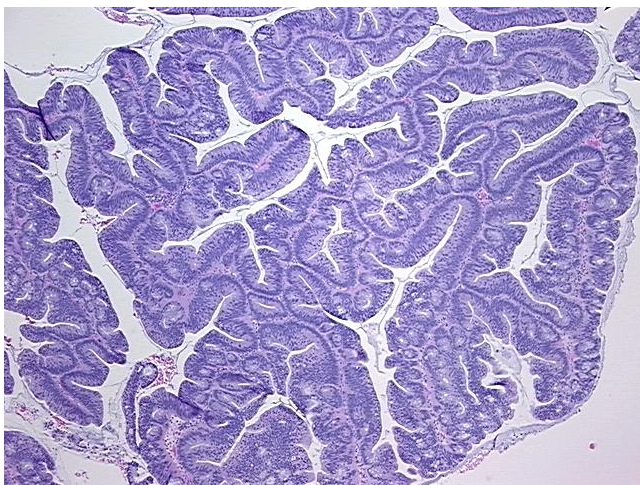
#### Product data:

Product Type:	FFPE Sections
Disease State:	Other Disease
Diagnosis Category:	Benign Tumors
Tissue:	Colon
Frozen Sample ID:	PA0F33685D
Case ID:	CI0000018947
Tissue of Origin:	Colon: left
Site of Finding:	Colon: left
Appearance:	T
Sample Diagnosis (from Pathology Verification):	Adenoma of colon
Normal:	15%
Lesional:	0%
Tumor:	80%
Tumor Hypo/Acellular Stroma:	0%
Tumor Hypercellular Stroma:	5%
Necrosis:	0%
CASE Diagnosis (from medical center path report):	Adenocarcinoma of colon, mucinous
Age:	74
Gender:	Female
Race:	White or Caucasian
Tumor Grade:	AJCC G1: Well differentiated

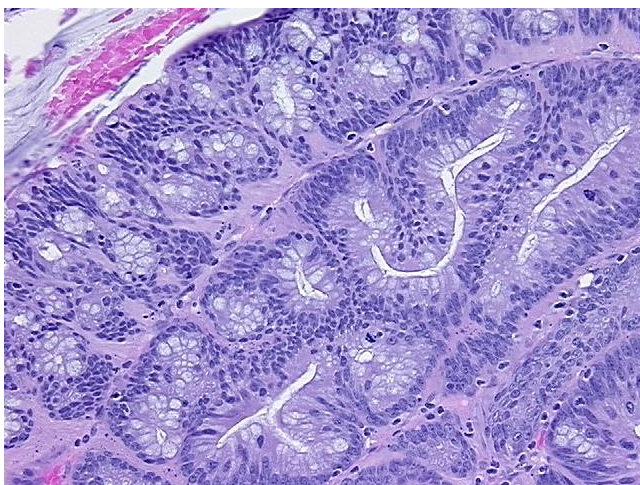


[View online »](#)

Minimum Stage Grouping:	IIIC
T (Extent of Primary Tumor):	T2
N (Lymph node metastasis):	N2
M (Distant metastasis):	MX
Storage:	Store FFPE tissue sections at +4°C.
Stability:	All FFPE tissue sections are stable for 1 year from date of purchase.

**Product images:**

4x Image



20x Image