

Product datasheet for **CS648039**

Frozen Tissue Sections, Lung: right middle lobe

Product data:

Product Type:	Frozen Sections
Disease State:	Cancer
Diagnosis Category:	Lung Cancer
Tissue:	Lung
Frozen Sample ID:	FR5B3466DA
Case ID:	CU0000014767
Tissue of Origin:	Lung: right middle lobe
Site of Finding:	Lymph node
Appearance:	Tumor
Sample Diagnosis (from Pathology Verification):	Carcinoma of lung, small cell, metastatic
Normal:	25%
Lesional:	0%
Tumor:	55%
Tumor Hypo/Acellular Stroma:	20%
Tumor Hypercellular Stroma:	0%
Necrosis:	0%
CASE Diagnosis (from medical center path report):	Carcinoma of lung, small cell
Age:	63
Gender:	Male
Tumor Grade:	AJCC G3: Poorly differentiated
Minimum Stage Grouping:	IIA



[View online »](#)

T (Extent of Primary Tumor): pT1

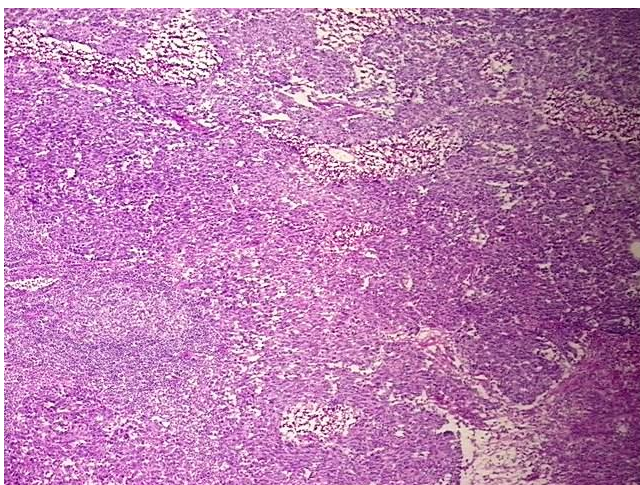
N (Lymph node metastasis): pN1

M (Distant metastasis): pMX

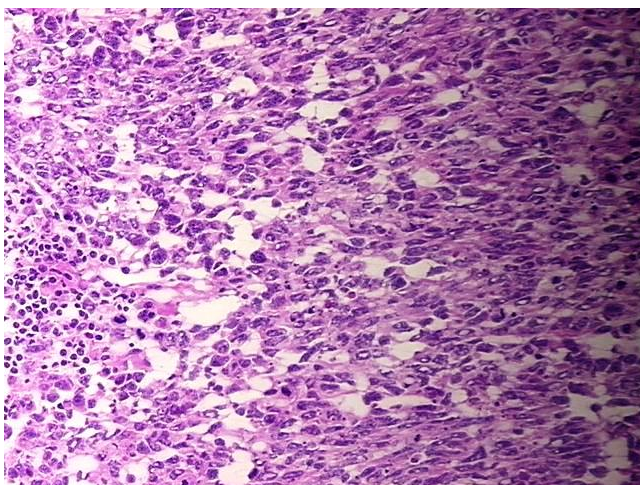
Storage: Store frozen tissue sections at -80°C.

Stability: All frozen tissue sections are stable for 1 year from date of purchase if stored at -80°C without repeated freeze/thaws.

Product images:



4x Image



20x Image