

Product datasheet for **CS647811**

Frozen Tissue Sections, Colon: rectosigmoid

Product data:

Product Type:	Frozen Sections
Disease State:	Cancer
Diagnosis Category:	Colorectal Cancer
Tissue:	Colon
Frozen Sample ID:	FR6A38A47E
Case ID:	CU0000014739
Tissue of Origin:	Colon: rectosigmoid
Site of Finding:	Colon: rectosigmoid
Appearance:	Tumor
Sample Diagnosis (from Pathology Verification):	Adenocarcinoma of colon
Normal:	0%
Lesional:	0%
Tumor:	80%
Tumor Hypo/Acellular Stroma:	0%
Tumor Hypercellular Stroma:	15%
Necrosis:	5%
CASE Diagnosis (from medical center path report):	Adenocarcinoma of colon
Age:	63
Gender:	Male
Tumor Grade:	AJCC G1: Well differentiated
Minimum Stage Grouping:	IIIC



[View online »](#)

T (Extent of Primary Tumor): pT3

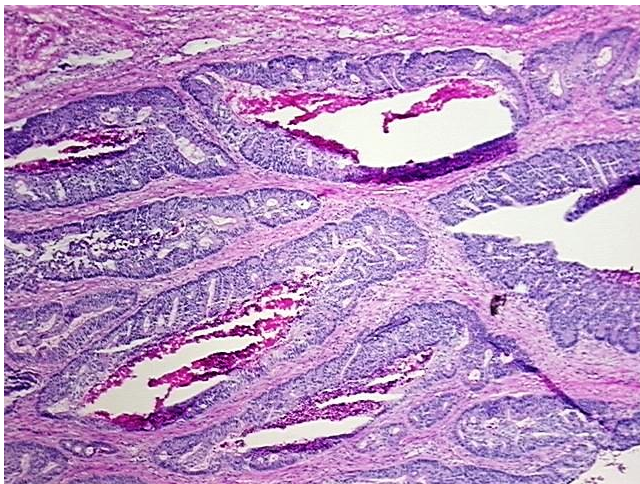
N (Lymph node metastasis): pN2

M (Distant metastasis): pMX

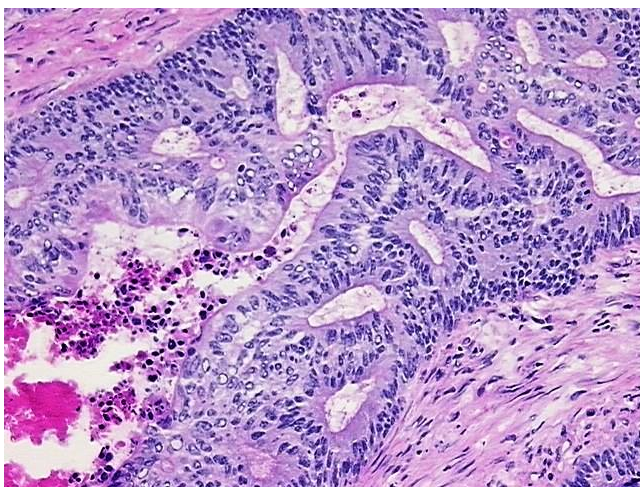
Storage: Store frozen tissue sections at -80°C.

Stability: All frozen tissue sections are stable for 1 year from date of purchase if stored at -80°C without repeated freeze/thaws.

Product images:



4x Image



20x Image