

## Product datasheet for **CS643451**

### Frozen Tissue Sections, Neurovascular bundle

#### Product data:

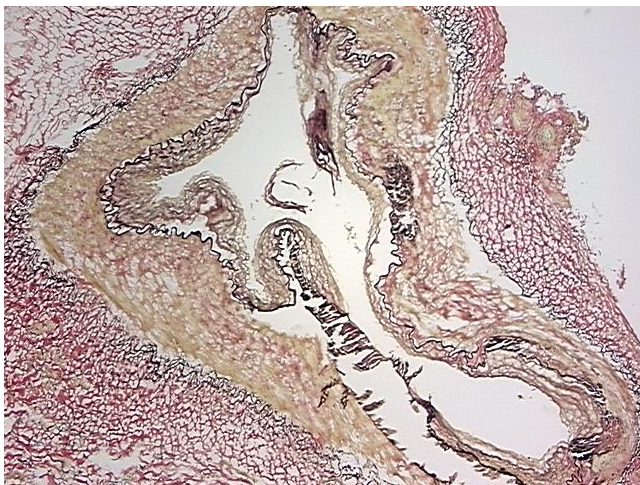
Product Type:	Frozen Sections
Disease State:	Other Disease
Diagnosis Category:	Atherosclerosis
Tissue:	Artery
Frozen Sample ID:	FR6A38B6C2
Case ID:	CU0000012833
Tissue of Origin:	Neurovascular bundle
Site of Finding:	Neurovascular bundle
Appearance:	L
Sample Diagnosis (from Pathology Verification):	Atherosclerosis
Normal:	60%
Lesional:	40%
Tumor:	0%
Tumor Hypo/Acellular Stroma:	0%
Tumor Hypercellular Stroma:	0%
Necrosis:	0%
Pathology Verification notes from H&E review:	Non Tumor Structures: 40% Arteries, 25% Veins, 5% Vessels, 30% Nerves; Other Features/Comments: arterial atherosclerosis
CASE Diagnosis (from medical center path report):	Atherosclerosis
Age:	78
Gender:	Female
Storage:	Store frozen tissue sections at -80°C.



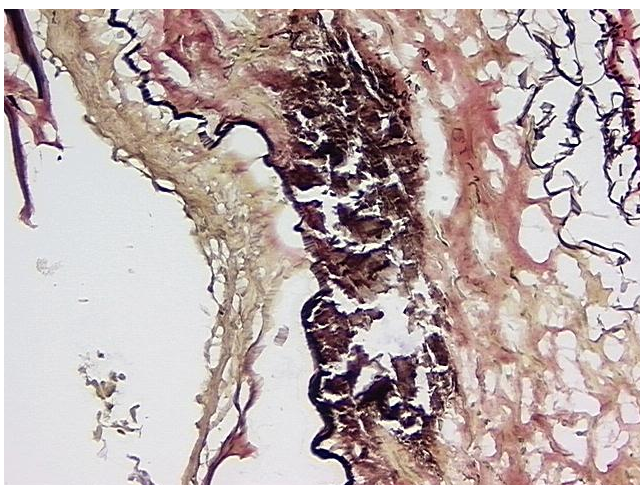
[View online »](#)

**Stability:** All frozen tissue sections are stable for 1 year from date of purchase if stored at -80°C without repeated freeze/thaws.

**Product images:**



4x Image



20x Image