

## Product datasheet for **CS636818**

### Frozen Tissue Sections, Colon: right

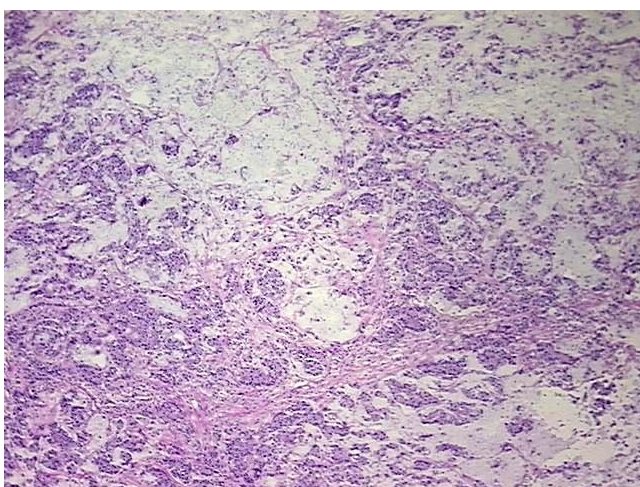
#### Product data:

|   |   |
|---|---|
| Product Type:                                     | Frozen Sections   |
| Disease State:                                    | Cancer  |
| Diagnosis Category:                               | Colorectal Cancer   |
| Tissue:   | Colon   |
| Frozen Sample ID:                                 | FR5B33FCC9  |
| Case ID:  | CU0000011081  |
| Tissue of Origin:                                 | Colon: right  |
| Site of Finding:                                  | Ileum   |
| Appearance:                                       | Tumor   |
| Sample Diagnosis (from Pathology Verification):   | Adenocarcinoma of colon, mucinous   |
| Normal:   | 0%  |
| Lesional:   | 0%  |
| Tumor:  | 40%   |
| Tumor Hypo/Acellular Stroma:                      | 35%   |
| Tumor Hypercellular Stroma:                       | 25%   |
| Necrosis:   | 0%  |
| Pathology Verification notes from H&E review:     | Tumor: with signet ring cell features and direct extension to the ileum; Tumor Stroma (Hypo/Acellular): Mucin |
| CASE Diagnosis (from medical center path report): | Adenocarcinoma of colon, mucinous   |
| Age:  | 67  |
| Gender:   | Female  |
| Tumor Grade:                                      | AJCC G3: Poorly differentiated  |

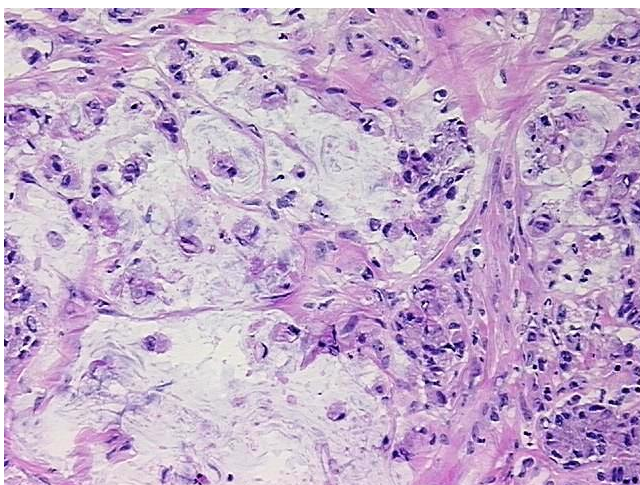


[View online »](#)

|                              |  |
|------------------------------|--|
| Minimum Stage Grouping:      | IV   |
| T (Extent of Primary Tumor): | pT4  |
| N (Lymph node metastasis):   | pN2  |
| M (Distant metastasis):      | pM1  |
| Storage:                     | Store frozen tissue sections at -80°C.   |
| Stability:                   | All frozen tissue sections are stable for 1 year from date of purchase if stored at -80°C without repeated freeze/thaws. |

**Product images:**

4x Image



20x Image