

Product datasheet for **CS633552**

Frozen Tissue Sections, Colon: right

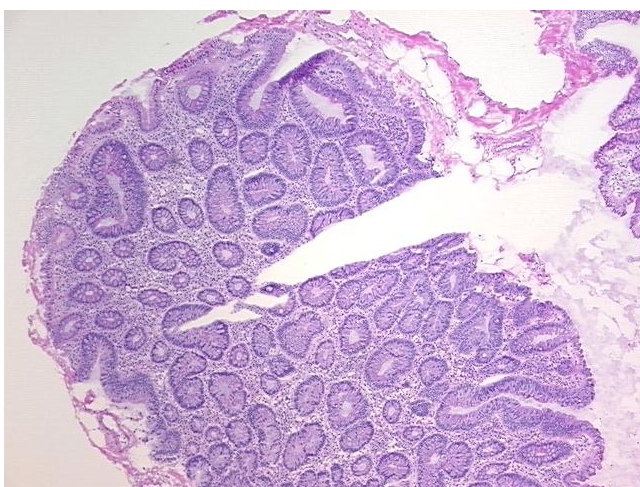
Product data:

Product Type:	Frozen Sections
Disease State:	Other Disease
Diagnosis Category:	Benign Tumors
Tissue:	Colon
Frozen Sample ID:	FR0002A592
Case ID:	CU0000009081
Tissue of Origin:	Colon: right
Site of Finding:	Colon: right
Appearance:	T
Sample Diagnosis (from Pathology Verification):	Adenoma of colon
Normal:	95%
Lesional:	0%
Tumor:	5%
Tumor Hypo/Acellular Stroma:	0%
Tumor Hypercellular Stroma:	0%
Necrosis:	0%
Pathology Verification notes from H&E review:	lesion: focal adenomatous change; normal: 80% mucosa, 10% submucosa, 10% muscle
CASE Diagnosis (from medical center path report):	Adenocarcinoma of colon
Age:	63
Gender:	Male
Tumor Grade:	AJCC G1: Well differentiated

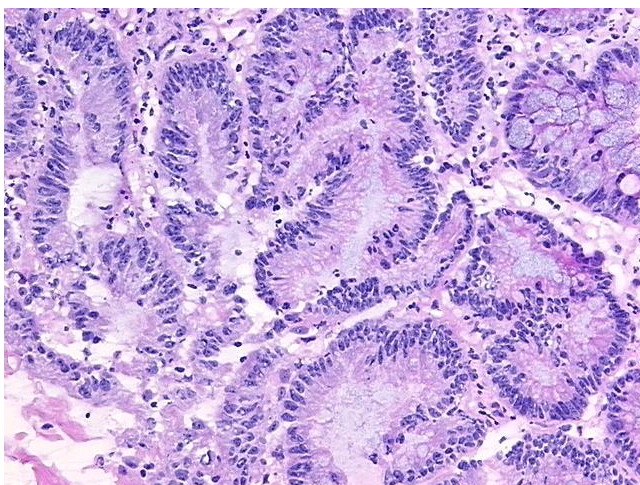


[View online »](#)

Minimum Stage Grouping:	I
T (Extent of Primary Tumor):	T2
N (Lymph node metastasis):	N0
M (Distant metastasis):	MX
Storage:	Store frozen tissue sections at -80°C.
Stability:	All frozen tissue sections are stable for 1 year from date of purchase if stored at -80°C without repeated freeze/thaws.

Product images:

4x Image



20x Image