

Product datasheet for **CS633504**

Frozen Tissue Sections, Lung

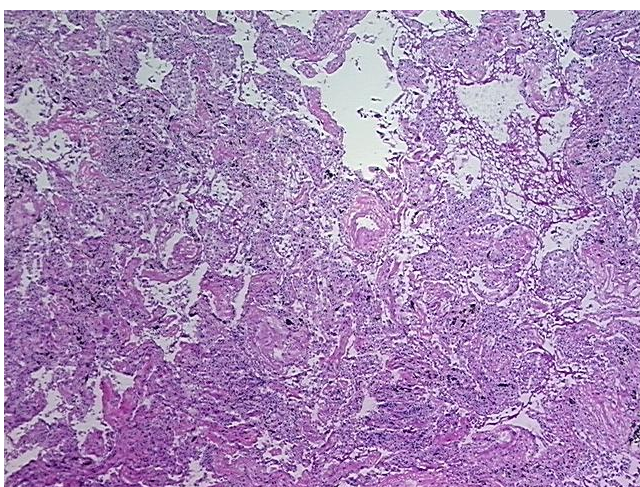
Product data:

Product Type:	Frozen Sections
Disease State:	Other Disease
Diagnosis Category:	Pneumonia
Tissue:	Lung
Frozen Sample ID:	FR5B33CA72
Case ID:	CU0000009076
Tissue of Origin:	Lung
Site of Finding:	Lung
Appearance:	L
Sample Diagnosis (from Pathology Verification):	Pneumonia, interstitial, chronic
Normal:	0%
Lesional:	100%
Tumor:	0%
Tumor Hypo/Acellular Stroma:	0%
Tumor Hypercellular Stroma:	0%
Necrosis:	0%
Pathology Verification notes from H&E review:	Inflammation: Mild Mixed inflammatory infiltrate; Non Tumor Structures: 70% Alveoli, 30% Fibrovascular septa
CASE Diagnosis (from medical center path report):	Carcinoma of lung, large cell
Age:	55
Gender:	Male
Tumor Grade:	AJCC G3: Poorly differentiated

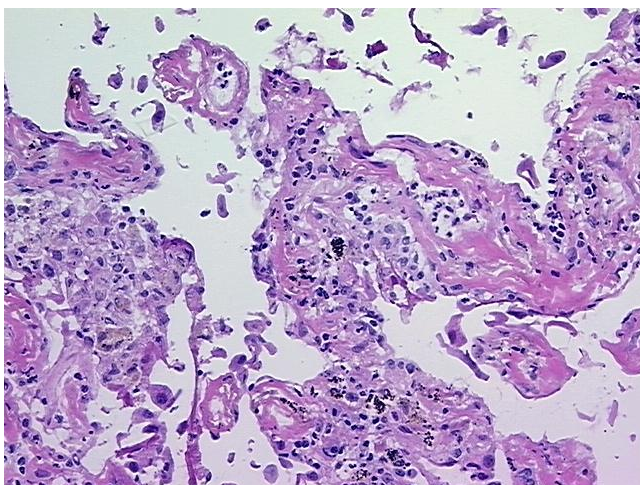


[View online »](#)

Minimum Stage Grouping:	IIA
T (Extent of Primary Tumor):	T1
N (Lymph node metastasis):	N1
M (Distant metastasis):	MX
Storage:	Store frozen tissue sections at -80°C.
Stability:	All frozen tissue sections are stable for 1 year from date of purchase if stored at -80°C without repeated freeze/thaws.

Product images:

4x Image



20x Image