

## Product datasheet for **CS633144**

### Frozen Tissue Sections, Lung

#### Product data:

Product Type:	Frozen Sections
Disease State:	Other Disease
Diagnosis Category:	Chronic Obstructive Pulmonary Disease (COPD)
Tissue:	Lung
Frozen Sample ID:	FR0002F1C1
Case ID:	CU0000006889
Tissue of Origin:	Lung
Site of Finding:	Lung
Appearance:	L
Sample Diagnosis (from Pathology Verification):	Emphysema, centrilobular
Normal:	20%
Lesional:	80%
Tumor:	0%
Tumor Hypo/Acellular Stroma:	0%
Tumor Hypercellular Stroma:	0%
Necrosis:	0%
Pathology Verification notes from H&E review:	non-neoplastic lesion: 70% alveoli, 0% bronchioles, 30% fibrovascular septa
CASE Diagnosis (from medical center path report):	Emphysema, centrilobular
Age:	55
Gender:	Male
Diagnostic Test Results:	Acid-fast bacteria ~ AFB ~ Ziehl-Neelsen acid fast,Negative

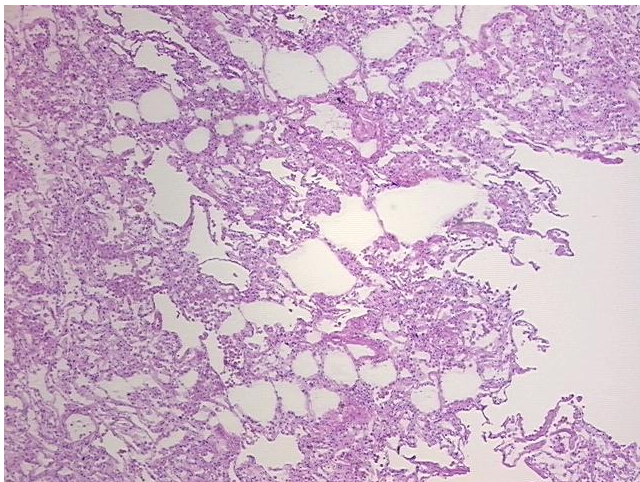


[View online »](#)

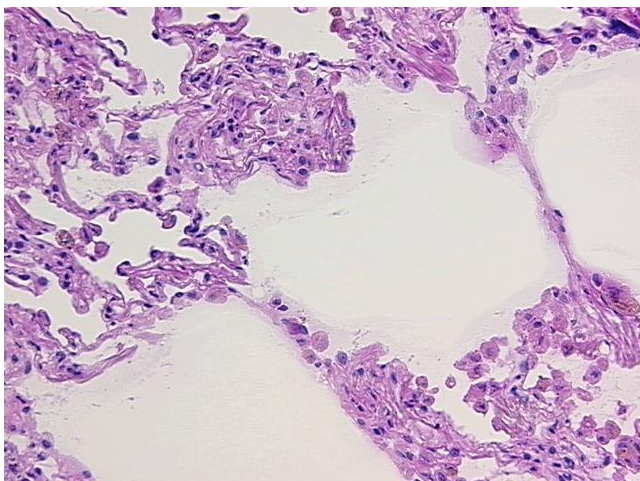
**Storage:** Store frozen tissue sections at -80°C.

**Stability:** All frozen tissue sections are stable for 1 year from date of purchase if stored at -80°C without repeated freeze/thaws.

**Product images:**



4x Image



20x Image