

Product datasheet for CS631081

Frozen Tissue Sections, Endometrium

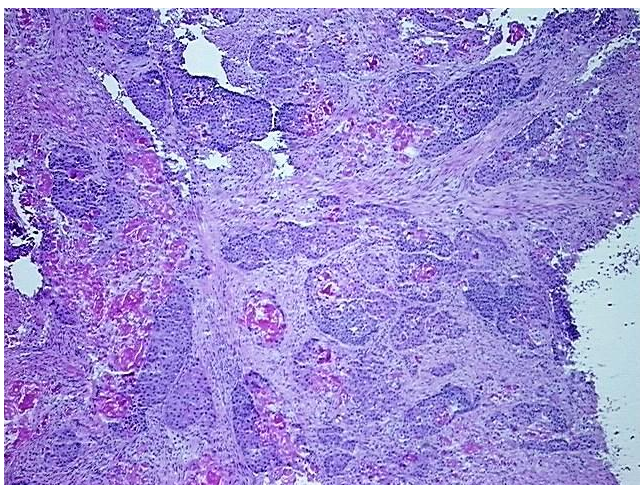
Product data:

Product Type:	Frozen Sections
Disease State:	Cancer
Diagnosis Category:	Endometrial Cancer
Tissue:	Endometrium
Frozen Sample ID:	FR00022682
Case ID:	CU0000006670
Tissue of Origin:	Endometrium
Site of Finding:	Uterus
Appearance:	Tumor
Sample Diagnosis (from Pathology Verification):	Adenocarcinoma of endometrium, endometrioid, squamous features, focal
Normal:	45%
Lesional:	0%
Tumor:	30%
Tumor Hypo/Acellular Stroma:	0%
Tumor Hypercellular Stroma:	0%
Necrosis:	25%
Pathology Verification notes from H&E review:	Non Tumor Structures: 100% Myometrium; Other Features/Comments: Tumor area:6 mm x 3 mm
CASE Diagnosis (from medical center path report):	Adenocarcinoma of endometrium, endometrioid, squamous features, focal
Age:	52
Gender:	Female
Tumor Grade:	FIGO G3: Poorly differentiated

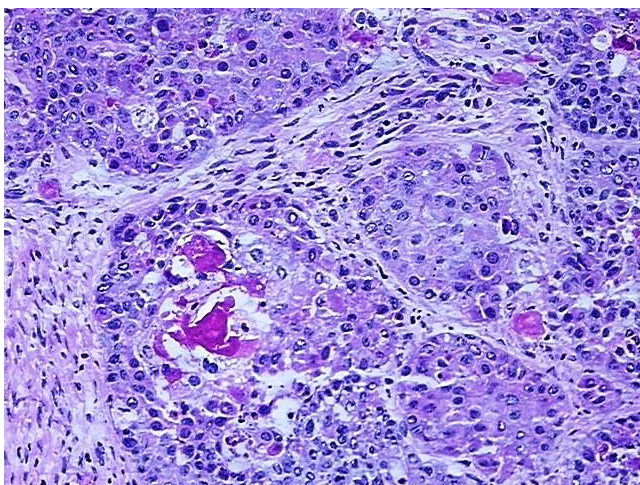


[View online »](#)

Minimum Stage Grouping:	IIIA
T (Extent of Primary Tumor):	pT3a
N (Lymph node metastasis):	pNX
M (Distant metastasis):	pMX
Storage:	Store frozen tissue sections at -80°C.
Stability:	All frozen tissue sections are stable for 1 year from date of purchase if stored at -80°C without repeated freeze/thaws.

Product images:

4x Image



20x Image