

Product datasheet for **CS630796**

Frozen Tissue Sections, Cecum

Product data:

| | |
|---------------------------------------------------|--------------------------------|
| Product Type: | Frozen Sections |
| Disease State: | Cancer |
| Diagnosis Category: | Colorectal Cancer |
| Tissue: | Colon |
| Frozen Sample ID: | FR6A38A7E0 |
| Case ID: | CU0000006646 |
| Tissue of Origin: | Cecum |
| Site of Finding: | Cecum |
| Appearance: | Tumor |
| Sample Diagnosis (from Pathology Verification): | Adenocarcinoma of colon |
| Normal: | 40% |
| Lesional: | 0% |
| Tumor: | 30% |
| Tumor Hypo/Acellular Stroma: | 20% |
| Tumor Hypercellular Stroma: | 10% |
| Necrosis: | 0% |
| CASE Diagnosis (from medical center path report): | Adenocarcinoma of colon |
| Age: | 77 |
| Gender: | Male |
| Tumor Grade: | AJCC G3: Poorly differentiated |
| Minimum Stage Grouping: | IV |



[View online »](#)

T (Extent of Primary Tumor): pT4

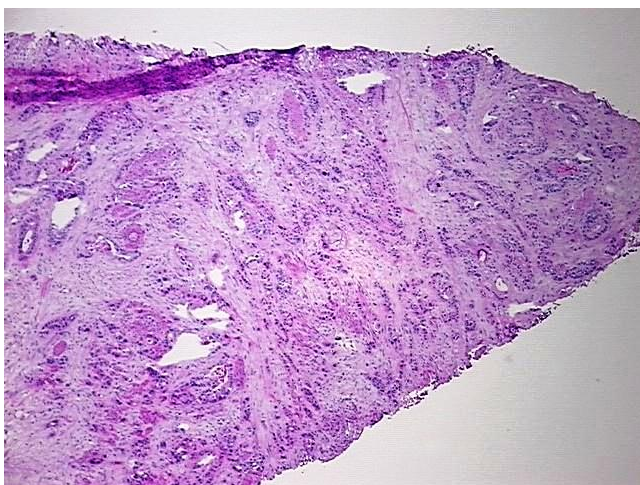
N (Lymph node metastasis): pN0

M (Distant metastasis): pM1

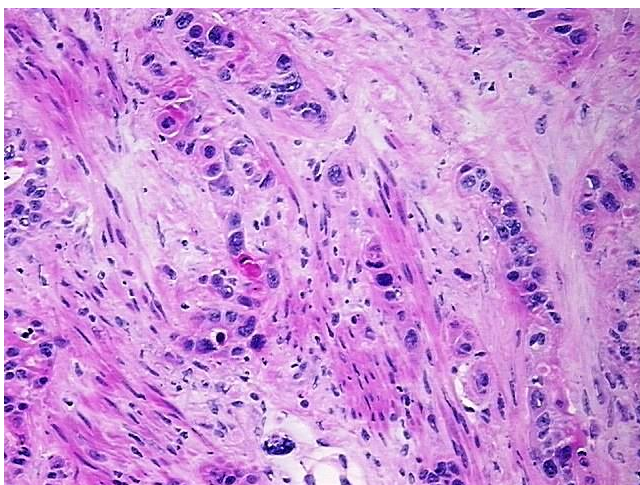
Storage: Store frozen tissue sections at -80°C.

Stability: All frozen tissue sections are stable for 1 year from date of purchase if stored at -80°C without repeated freeze/thaws.

Product images:



4x Image



20x Image