

Product datasheet for **CS629821**

Frozen Tissue Sections, Colon: right

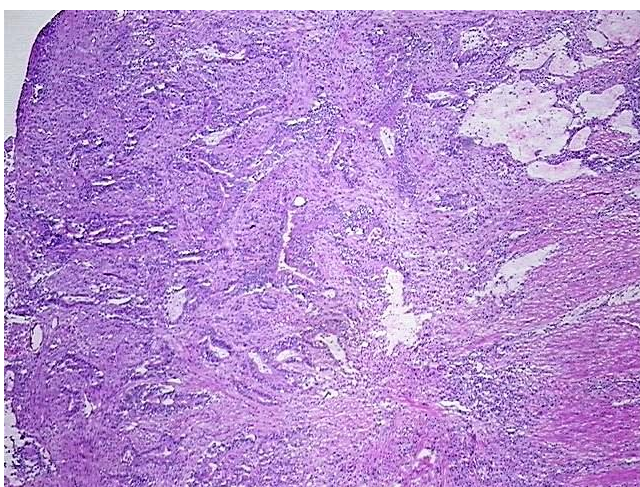
Product data:

Product Type:	Frozen Sections
Disease State:	Cancer
Diagnosis Category:	Colorectal Cancer
Tissue:	Colon
Frozen Sample ID:	FR0001DC09
Case ID:	CU0000006581
Tissue of Origin:	Colon: right
Site of Finding:	Colon: right
Appearance:	Tumor
Sample Diagnosis (from Pathology Verification):	Adenocarcinoma of colon
Normal:	0%
Lesional:	0%
Tumor:	45%
Tumor Hypo/Acellular Stroma:	0%
Tumor Hypercellular Stroma:	50%
Necrosis:	5%
Pathology Verification notes from H&E review:	tumor stroma contains focal prominent lymphoplasmacytic infiltrate
CASE Diagnosis (from medical center path report):	Adenocarcinoma of colon
Age:	67
Gender:	Male
Tumor Grade:	AJCC G1: Well differentiated

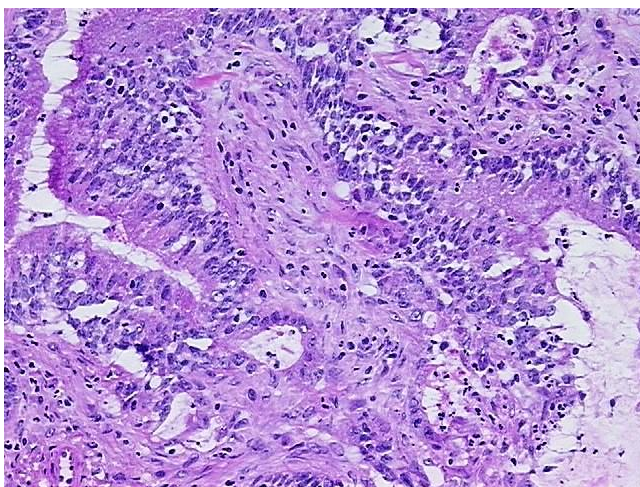


[View online »](#)

Minimum Stage Grouping:	IIA
T (Extent of Primary Tumor):	pT3
N (Lymph node metastasis):	pN0
M (Distant metastasis):	pMX
Storage:	Store frozen tissue sections at -80°C.
Stability:	All frozen tissue sections are stable for 1 year from date of purchase if stored at -80°C without repeated freeze/thaws.

Product images:

4x Image



20x Image