

## Product datasheet for CS627156

### Frozen Tissue Sections, Artery

#### Product data:

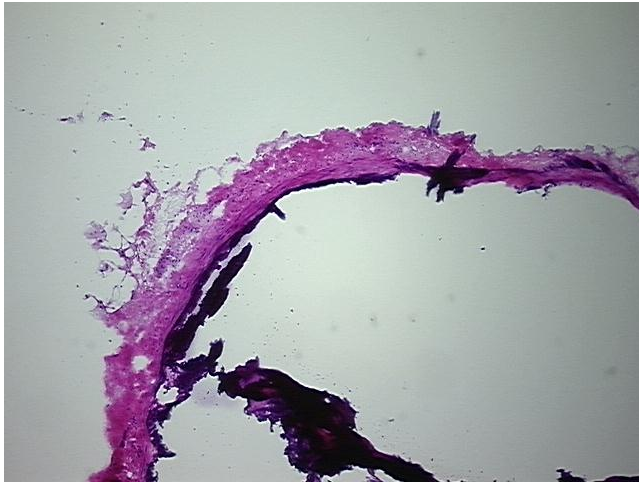
Product Type:	Frozen Sections
Disease State:	Other Disease
Diagnosis Category:	Atherosclerosis
Tissue:	Artery
Frozen Sample ID:	FR5B33A35F
Case ID:	CU0000006209
Tissue of Origin:	Artery
Site of Finding:	Artery
Appearance:	L
Sample Diagnosis (from Pathology Verification):	Atherosclerosis
Normal:	0%
Lesional:	100%
Tumor:	0%
Tumor Hypo/Acellular Stroma:	0%
Tumor Hypercellular Stroma:	0%
Necrosis:	0%
Pathology Verification notes from H&E review:	Non Tumor Structures: 40% Intima, 30% Media, 30% Adventitia; Other Features/Comments: with calcification
CASE Diagnosis (from medical center path report):	Osteomyelitis
Age:	48
Gender:	Male
Storage:	Store frozen tissue sections at -80°C.



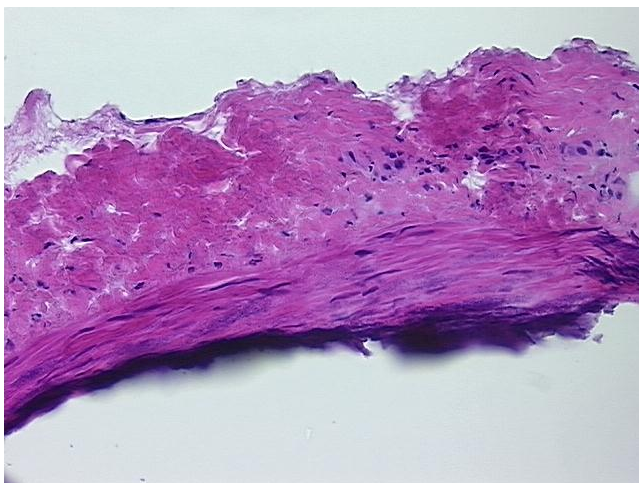
[View online »](#)

**Stability:** All frozen tissue sections are stable for 1 year from date of purchase if stored at -80°C without repeated freeze/thaws.

**Product images:**



4x Image



20x Image