

## Product datasheet for **CS626056**

### Frozen Tissue Sections, Colon: transverse

#### Product data:

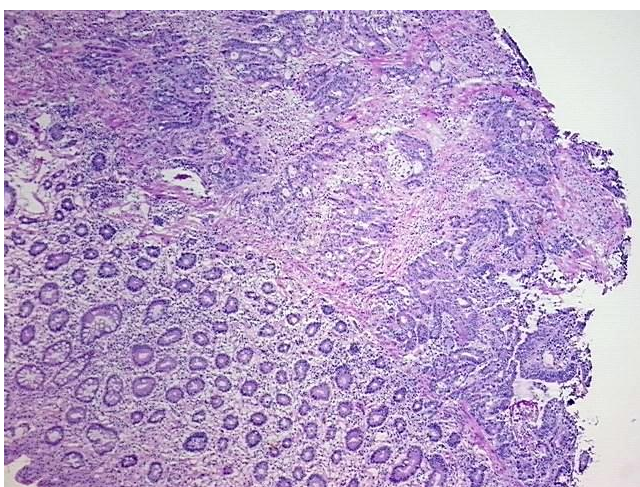
Product Type:	Frozen Sections
Disease State:	Cancer
Diagnosis Category:	Colorectal Cancer
Tissue:	Colon
Frozen Sample ID:	FR5B338C8C
Case ID:	CU0000006114
Tissue of Origin:	Colon: transverse
Site of Finding:	Colon: transverse
Appearance:	Tumor
Sample Diagnosis (from Pathology Verification):	Adenocarcinoma of colon
Normal:	75%
Lesional:	0%
Tumor:	15%
Tumor Hypo/Acellular Stroma:	0%
Tumor Hypercellular Stroma:	5%
Necrosis:	5%
Pathology Verification notes from H&E review:	normal: 100% mucosa
CASE Diagnosis (from medical center path report):	Adenocarcinoma of colon
Age:	89
Gender:	Female
Tumor Grade:	AJCC G4: Undifferentiated



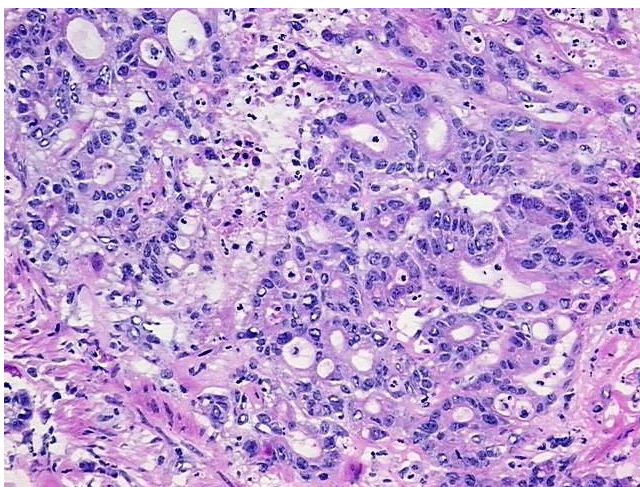
[View online »](#)

Minimum Stage Grouping:	III
T (Extent of Primary Tumor):	pT4
N (Lymph node metastasis):	pN2
M (Distant metastasis):	pMX
Storage:	Store frozen tissue sections at -80°C.
Stability:	All frozen tissue sections are stable for 1 year from date of purchase if stored at -80°C without repeated freeze/thaws.

### Product images:



4x Image



20x Image