

Product datasheet for **CS625378**

Frozen Tissue Sections, Endometrium

Product data:

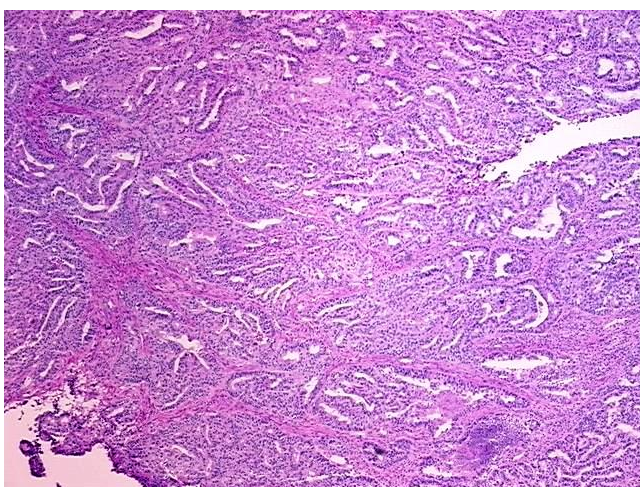
Product Type:	Frozen Sections
Disease State:	Cancer
Diagnosis Category:	Endometrial Cancer
Tissue:	Endometrium
Frozen Sample ID:	FR00021CC9
Case ID:	CU0000006010
Tissue of Origin:	Endometrium
Site of Finding:	Uterus
Appearance:	Tumor
Sample Diagnosis (from Pathology Verification):	Adenocarcinoma of endometrium, endometrioid
Normal:	5%
Lesional:	0%
Tumor:	70%
Tumor Hypo/Acellular Stroma:	0%
Tumor Hypercellular Stroma:	15%
Necrosis:	10%
Pathology Verification notes from H&E review:	tumor stroma: 50% desmoplasia, 50% mixed inflammatory cells
CASE Diagnosis (from medical center path report):	Adenocarcinoma of endometrium, endometrioid
Age:	44
Gender:	Female
Tumor Grade:	FIGO G2: Moderately differentiated



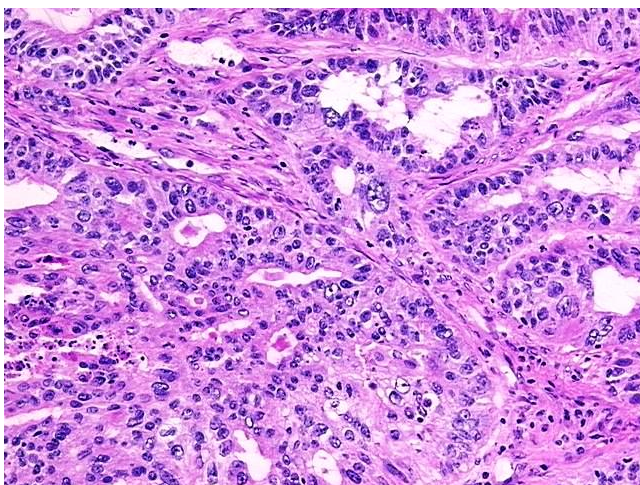
[View online »](#)

Minimum Stage Grouping:	IB
T (Extent of Primary Tumor):	pT1b
N (Lymph node metastasis):	pN0
M (Distant metastasis):	pMX
Storage:	Store frozen tissue sections at -80°C.
Stability:	All frozen tissue sections are stable for 1 year from date of purchase if stored at -80°C without repeated freeze/thaws.

Product images:



4x Image



20x Image