

Product datasheet for **CS623518**

Frozen Tissue Sections, Breast

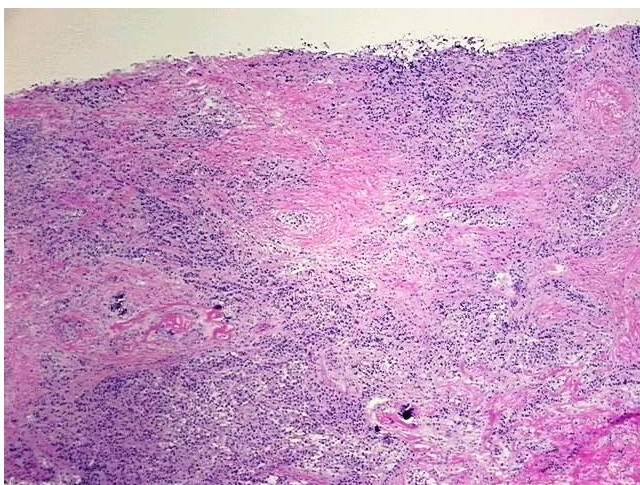
Product data:

Product Type:	Frozen Sections
Disease State:	Cancer
Diagnosis Category:	Breast Cancer
Tissue:	Breast
Frozen Sample ID:	FR65EDFF48
Case ID:	CU0000005807
Tissue of Origin:	Breast
Site of Finding:	Breast
Appearance:	Tumor
Sample Diagnosis (from Pathology Verification):	Adenocarcinoma of breast, ductal
Normal:	0%
Lesional:	0%
Tumor:	45%
Tumor Hypo/Acellular Stroma:	55%
Tumor Hypercellular Stroma:	0%
Necrosis:	0%
Pathology Verification notes from H&E review:	Tumor Stroma (Hypo/Acellular): Fibrosis; Inflammation: Mild Lymphoplasmacytic infiltrate; Other Features/Comments: Microcalcification present
CASE Diagnosis (from medical center path report):	Adenocarcinoma of breast, ductal
Age:	68
Gender:	Female
Tumor Grade:	NSABP Grade: Nuclear 2 of 3 & Histologic 2 of 3

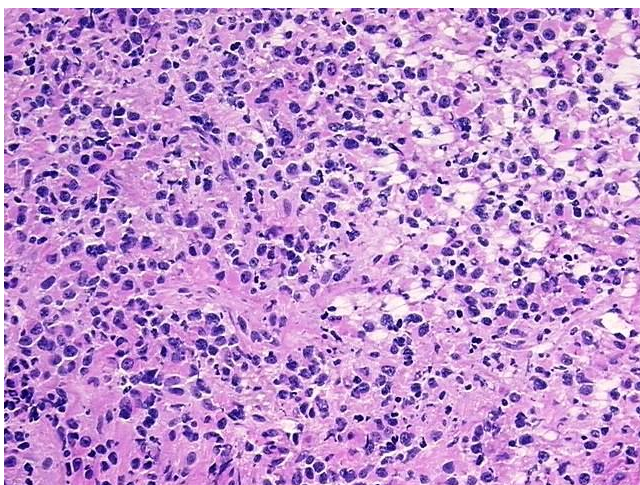


[View online »](#)

Minimum Stage Grouping:	IIIA
T (Extent of Primary Tumor):	pT2
N (Lymph node metastasis):	pN2
M (Distant metastasis):	pMX
Storage:	Store frozen tissue sections at -80°C.
Stability:	All frozen tissue sections are stable for 1 year from date of purchase if stored at -80°C without repeated freeze/thaws.

Product images:

4x Image



20x Image