

Product datasheet for CS622185

Frozen Tissue Sections, Endometrium

Product data:

Product Type:	Frozen Sections
Disease State:	Cancer
Diagnosis Category:	Endometrial Cancer
Tissue:	Endometrium
Frozen Sample ID:	FR0001A0BD
Case ID:	CU0000005720
Tissue of Origin:	Endometrium
Site of Finding:	Uterus
Appearance:	Tumor
Sample Diagnosis (from Pathology Verification):	Adenocarcinoma of endometrium, serous
Normal:	0%
Lesional:	0%
Tumor:	63%
Tumor Hypo/Acellular Stroma:	0%
Tumor Hypercellular Stroma:	2%
Necrosis:	35%
CASE Diagnosis (from medical center path report):	Adenocarcinoma of endometrium, serous
Age:	79
Gender:	Female
Tumor Grade:	FIGO G3: Poorly differentiated
Minimum Stage Grouping:	IB



[View online »](#)

T (Extent of Primary Tumor): pT1b

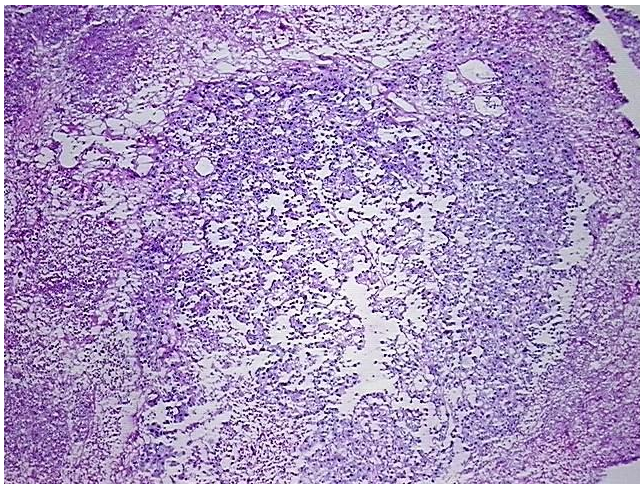
N (Lymph node metastasis): pN0

M (Distant metastasis): pMX

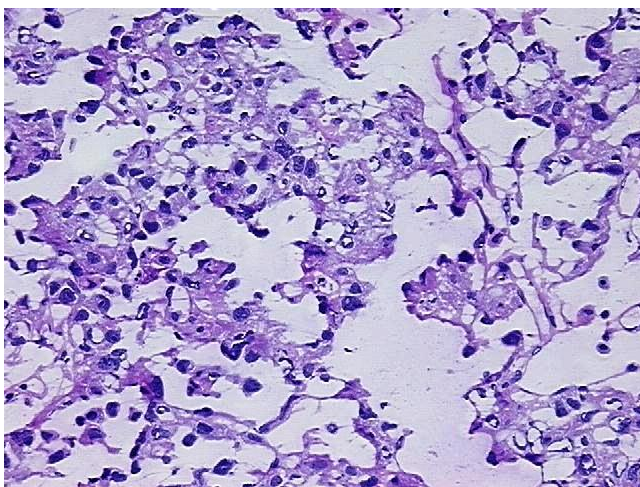
Storage: Store frozen tissue sections at -80°C.

Stability: All frozen tissue sections are stable for 1 year from date of purchase if stored at -80°C without repeated freeze/thaws.

Product images:



4x Image



20x Image