

Product datasheet for CS622097

Frozen Tissue Sections, Kidney

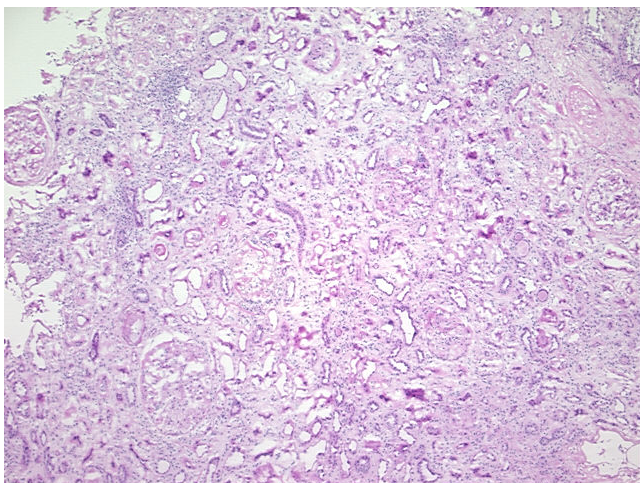
Product data:

| | |
|---|---|
| Product Type: | Frozen Sections |
| Disease State: | Other Disease |
| Diagnosis Category: | Kidney Disease |
| Tissue: | Kidney |
| Frozen Sample ID: | FR00019FF2 |
| Case ID: | CU0000005713 |
| Tissue of Origin: | Kidney |
| Site of Finding: | Kidney |
| Appearance: | L |
| Sample Diagnosis (from Pathology Verification): | Rejection of allograft of kidney |
| Normal: | 0% |
| Lesional: | 100% |
| Tumor: | 0% |
| Tumor Hypo/Acellular Stroma: | 0% |
| Tumor Hypercellular Stroma: | 0% |
| Necrosis: | 0% |
| Pathology Verification notes from H&E review: | 100% cortex, 0% medulla; contains chronic allograft nephropathy |
| CASE Diagnosis (from medical center path report): | Carcinoma of kidney, renal cell |
| Age: | 54 |
| Gender: | Male |
| Tumor Grade: | Other Histologic Grade |

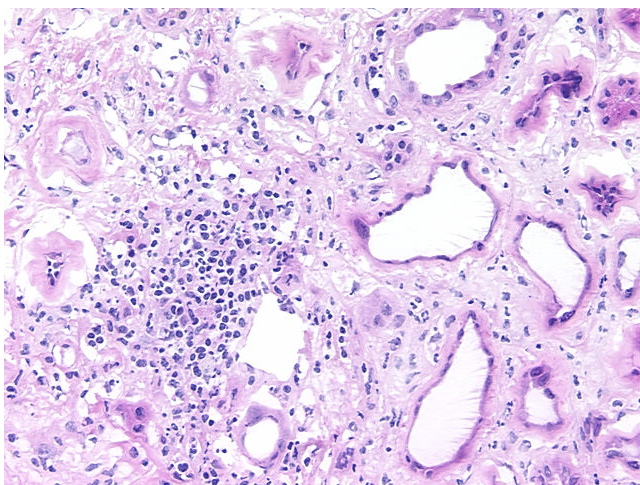


[View online »](#)

| | |
|------------------------------|--|
| Minimum Stage Grouping: | I |
| T (Extent of Primary Tumor): | T1 |
| N (Lymph node metastasis): | NX |
| M (Distant metastasis): | MX |
| Diagnostic Test Results: | Ulex europaeus agglutinin I ~ UEA1 ! by IHC,Negative; Vimentin ~ VIM ! by IHC,Positive, moderate; HMB45 melanoma antigen ~ GP100 ! by IHC,Negative; S100 protein,Negative; CD31 ~ PECAM1 ! by IHC,Negative; CD10 ~ CALLA ~ Common ALL antigen ! by |
| Storage: | Store frozen tissue sections at -80°C. |
| Stability: | All frozen tissue sections are stable for 1 year from date of purchase if stored at -80°C without repeated freeze/thaws. |

Product images:

4x Image



20x Image