

## Product datasheet for **CS622095**

### Frozen Tissue Sections, Kidney

#### Product data:

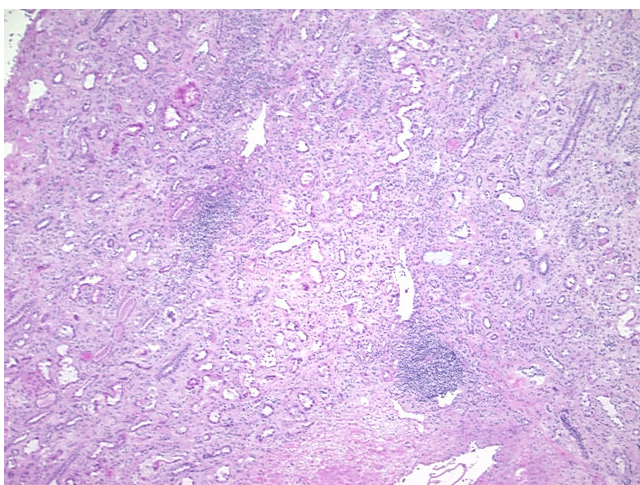
Product Type:	Frozen Sections
Disease State:	Other Disease
Diagnosis Category:	Kidney Disease
Tissue:	Kidney
Frozen Sample ID:	FR00019FF0
Case ID:	CU0000005713
Tissue of Origin:	Kidney
Site of Finding:	Kidney
Appearance:	L
Sample Diagnosis (from Pathology Verification):	Rejection of allograft of kidney
Normal:	0%
Lesional:	100%
Tumor:	0%
Tumor Hypo/Acellular Stroma:	0%
Tumor Hypercellular Stroma:	0%
Necrosis:	0%
Pathology Verification notes from H&E review:	15% cortex, 85% medulla; contains chronic allograft nephropathy
CASE Diagnosis (from medical center path report):	Carcinoma of kidney, renal cell
Age:	54
Gender:	Male
Tumor Grade:	Other Histologic Grade



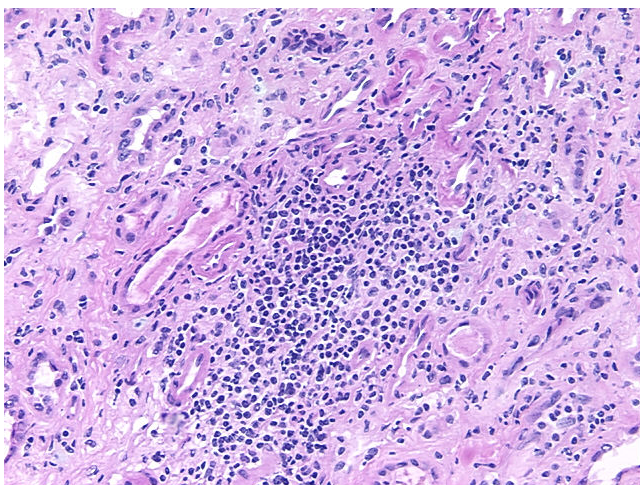
[View online »](#)

Minimum Stage Grouping:	I
T (Extent of Primary Tumor):	T1
N (Lymph node metastasis):	NX
M (Distant metastasis):	MX
Diagnostic Test Results:	Ulex europaeus agglutinin I ~ UEA1 ! by IHC,Negative; Vimentin ~ VIM ! by IHC,Positive, moderate; HMB45 melanoma antigen ~ GP100 ! by IHC,Negative; S100 protein,Negative; CD31 ~ PECAM1 ! by IHC,Negative; CD10 ~ CALLA ~ Common ALL antigen ! by
Storage:	Store frozen tissue sections at -80°C.
Stability:	All frozen tissue sections are stable for 1 year from date of purchase if stored at -80°C without repeated freeze/thaws.

### Product images:



4x Image



20x Image