

Product datasheet for **CS621756**

Frozen Tissue Sections, Spinal cord

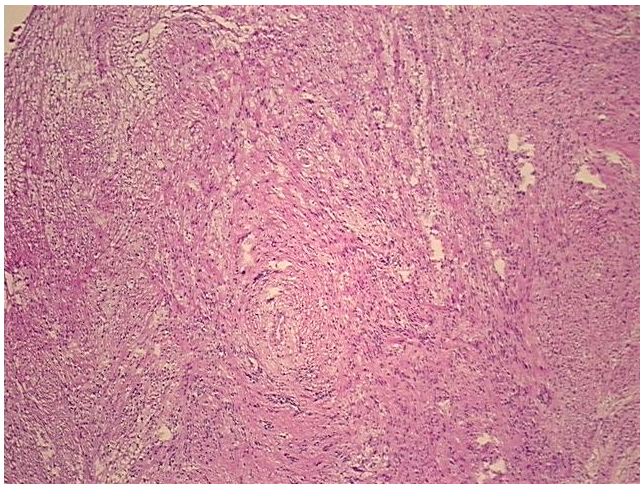
Product data:

Product Type:	Frozen Sections
Disease State:	Other Disease
Diagnosis Category:	Benign Tumors
Tissue:	Spinal cord
Frozen Sample ID:	FR0001AB7B
Case ID:	CU0000005699
Tissue of Origin:	Spinal cord
Site of Finding:	Spinal cord
Appearance:	T
Sample Diagnosis (from Pathology Verification):	Schwannoma
Normal:	0%
Lesional:	0%
Tumor:	90%
Tumor Hypo/Acellular Stroma:	0%
Tumor Hypercellular Stroma:	9%
Necrosis:	1%
CASE Diagnosis (from medical center path report):	Schwannoma
Age:	83
Gender:	Female
Tumor Grade:	Not Reported
Minimum Stage Grouping:	Not Reported

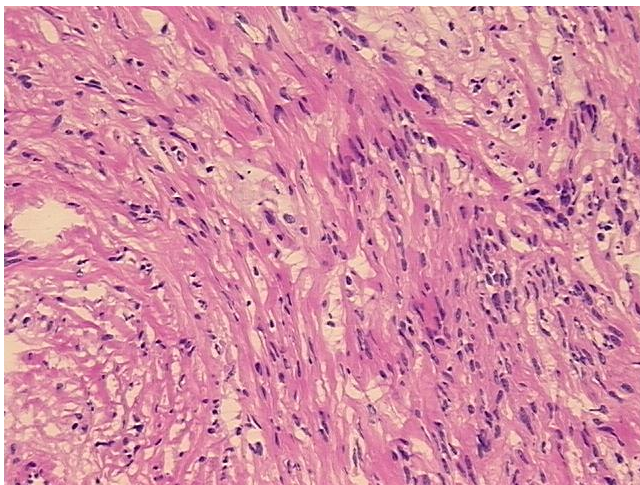


[View online »](#)

T (Extent of Primary Tumor):	Not Reported
N (Lymph node metastasis):	Not Reported
M (Distant metastasis):	Not Reported
Storage:	Store frozen tissue sections at -80°C.
Stability:	All frozen tissue sections are stable for 1 year from date of purchase if stored at -80°C without repeated freeze/thaws.

Product images:

4x Image



20x Image