

## Product datasheet for CS621160

### Frozen Tissue Sections, Breast

#### Product data:

Product Type:	Frozen Sections
Disease State:	Cancer
Diagnosis Category:	Breast Cancer
Tissue:	Breast
Frozen Sample ID:	FR65EDF620
Case ID:	CU0000005647
Tissue of Origin:	Breast
Site of Finding:	Small intestine
Appearance:	Tumor
Sample Diagnosis (from Pathology Verification):	Adenocarcinoma, metastatic, consistent with breast primary
Normal:	50%
Lesional:	0%
Tumor:	45%
Tumor Hypo/Acellular Stroma:	0%
Tumor Hypercellular Stroma:	5%
Necrosis:	0%
Pathology Verification notes from H&E review:	normal: 0% mucosa, 0% submucosa, 100% muscle
CASE Diagnosis (from medical center path report):	Adenocarcinoma, metastatic, consistent with breast primary
Age:	73
Gender:	Female
Tumor Grade:	Nottingham G3: 8-9 points High combined grade (unfavorable)



[View online »](#)

Minimum Stage Grouping: IV

T (Extent of Primary Tumor): pTX

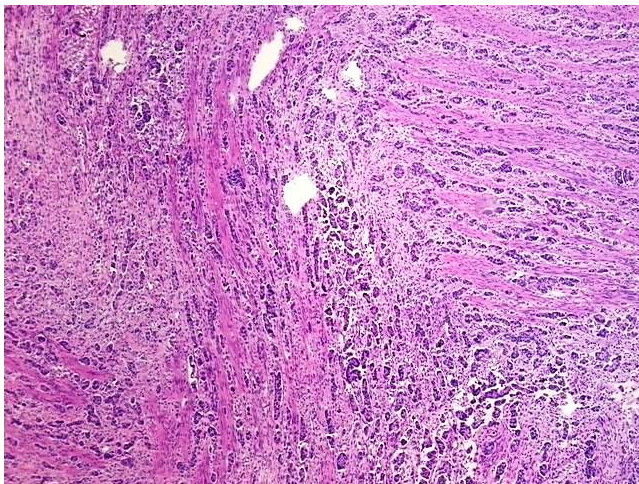
N (Lymph node metastasis): pN1

M (Distant metastasis): pM1

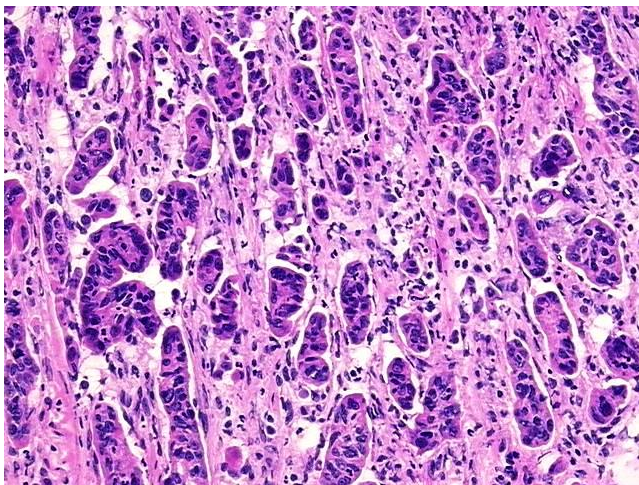
Storage: Store frozen tissue sections at -80°C.

Stability: All frozen tissue sections are stable for 1 year from date of purchase if stored at -80°C without repeated freeze/thaws.

### Product images:



4x Image



20x Image