

Product datasheet for **CS621157**

Frozen Tissue Sections, Breast

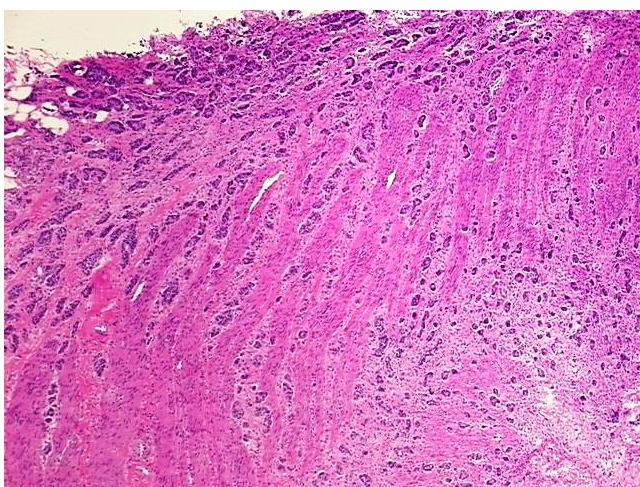
Product data:

Product Type:	Frozen Sections
Disease State:	Cancer
Diagnosis Category:	Breast Cancer
Tissue:	Breast
Frozen Sample ID:	FR5B3372C9
Case ID:	CU0000005647
Tissue of Origin:	Breast
Site of Finding:	Small intestine
Appearance:	Tumor
Sample Diagnosis (from Pathology Verification):	Adenocarcinoma, metastatic, consistent with breast primary
Normal:	55%
Lesional:	0%
Tumor:	40%
Tumor Hypo/Acellular Stroma:	0%
Tumor Hypercellular Stroma:	5%
Necrosis:	0%
Pathology Verification notes from H&E review:	normal: 20% mucosa, 25% submucosa, 55% muscle
CASE Diagnosis (from medical center path report):	Adenocarcinoma, metastatic, consistent with breast primary
Age:	73
Gender:	Female
Tumor Grade:	Nottingham G3: 8-9 points High combined grade (unfavorable)

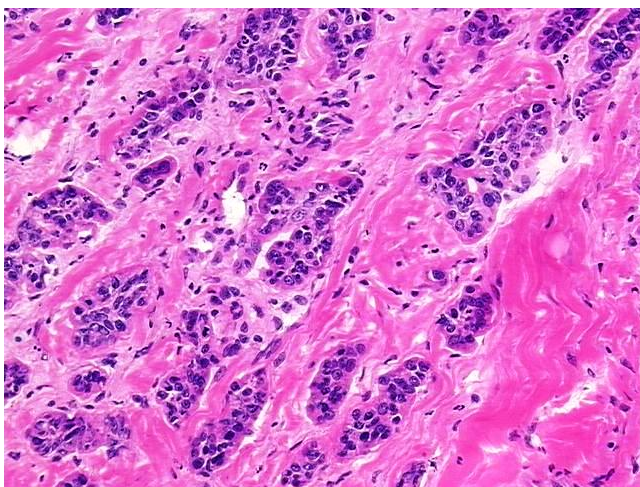


[View online »](#)

Minimum Stage Grouping:	IV
T (Extent of Primary Tumor):	pTX
N (Lymph node metastasis):	pN1
M (Distant metastasis):	pM1
Storage:	Store frozen tissue sections at -80°C.
Stability:	All frozen tissue sections are stable for 1 year from date of purchase if stored at -80°C without repeated freeze/thaws.

Product images:

4x Image



20x Image