

## Product datasheet for **CS620441**

### Frozen Tissue Sections, Uterus

#### Product data:

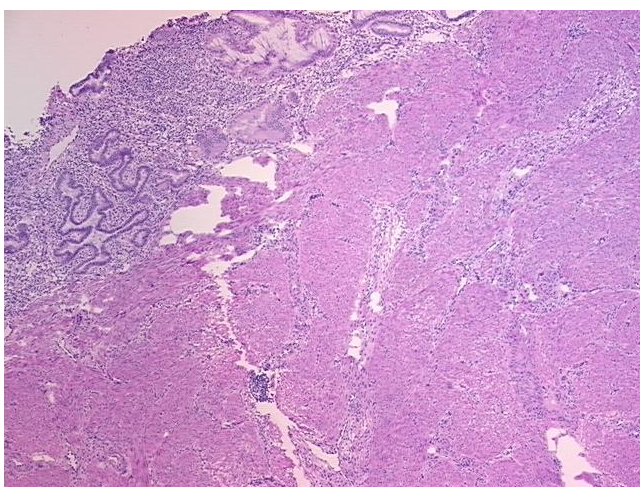
Product Type:	Frozen Sections
Disease State:	Normal
Diagnosis Category:	Normal
Tissue:	Uterus
Frozen Sample ID:	FR0001B440
Case ID:	CU0000005557
Tissue of Origin:	Uterus
Site of Finding:	Uterus
Appearance:	R
Sample Diagnosis (from Pathology Verification):	Within normal limits
Normal:	100%
Lesional:	0%
Tumor:	0%
Tumor Hypo/Acellular Stroma:	0%
Tumor Hypercellular Stroma:	0%
Necrosis:	0%
Pathology Verification notes from H&E review:	5% glands, 5% stroma, 90% myometrium
CASE Diagnosis (from medical center path report):	Tumor of ovary, mucinous, borderline
Age:	51
Gender:	Female
Tumor Grade:	AJCC GB: Borderline malignancy



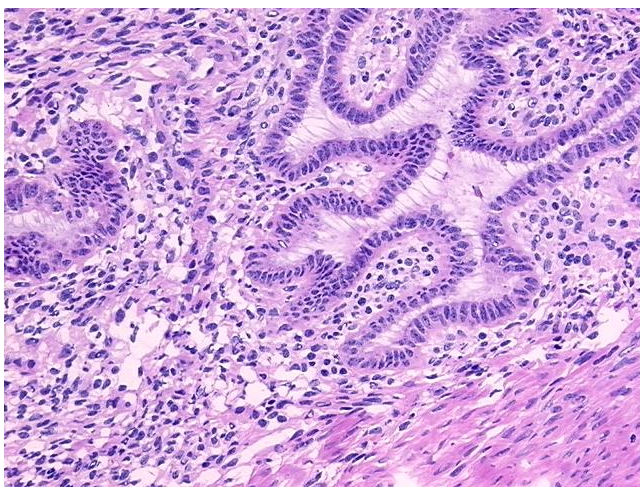
[View online »](#)

Minimum Stage Grouping:	IA
T (Extent of Primary Tumor):	T1a
N (Lymph node metastasis):	N0
M (Distant metastasis):	MX
Storage:	Store frozen tissue sections at -80°C.
Stability:	All frozen tissue sections are stable for 1 year from date of purchase if stored at -80°C without repeated freeze/thaws.

### Product images:



4x Image



20x Image