

Product datasheet for **CS615977**

Frozen Tissue Sections, Breast

Product data:

Product Type:	Frozen Sections
Disease State:	Cancer
Diagnosis Category:	Breast Cancer
Tissue:	Breast
Frozen Sample ID:	FR0001793A
Case ID:	CU0000005140
Tissue of Origin:	Breast
Site of Finding:	Breast
Appearance:	Tumor
Sample Diagnosis (from Pathology Verification):	Adenocarcinoma of breast, ductal
Normal:	0%
Lesional:	0%
Tumor:	45%
Tumor Hypo/Acellular Stroma:	55%
Tumor Hypercellular Stroma:	0%
Necrosis:	0%
CASE Diagnosis (from medical center path report):	Adenocarcinoma of breast, ductal
Age:	61
Gender:	Female
Tumor Grade:	NSABP Grade: Nuclear 2 of 3 & Histologic 2 of 3
Minimum Stage Grouping:	IIIB



[View online »](#)

T (Extent of Primary Tumor): pT4b

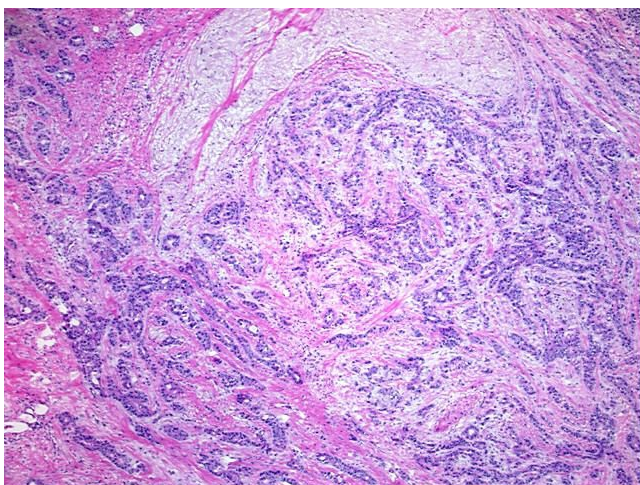
N (Lymph node metastasis): pNX

M (Distant metastasis): pMX

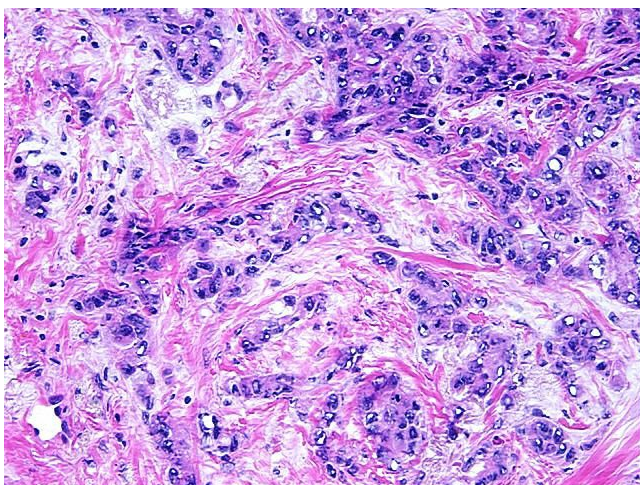
Storage: Store frozen tissue sections at -80°C.

Stability: All frozen tissue sections are stable for 1 year from date of purchase if stored at -80°C without repeated freeze/thaws.

Product images:



4x Image



20x Image